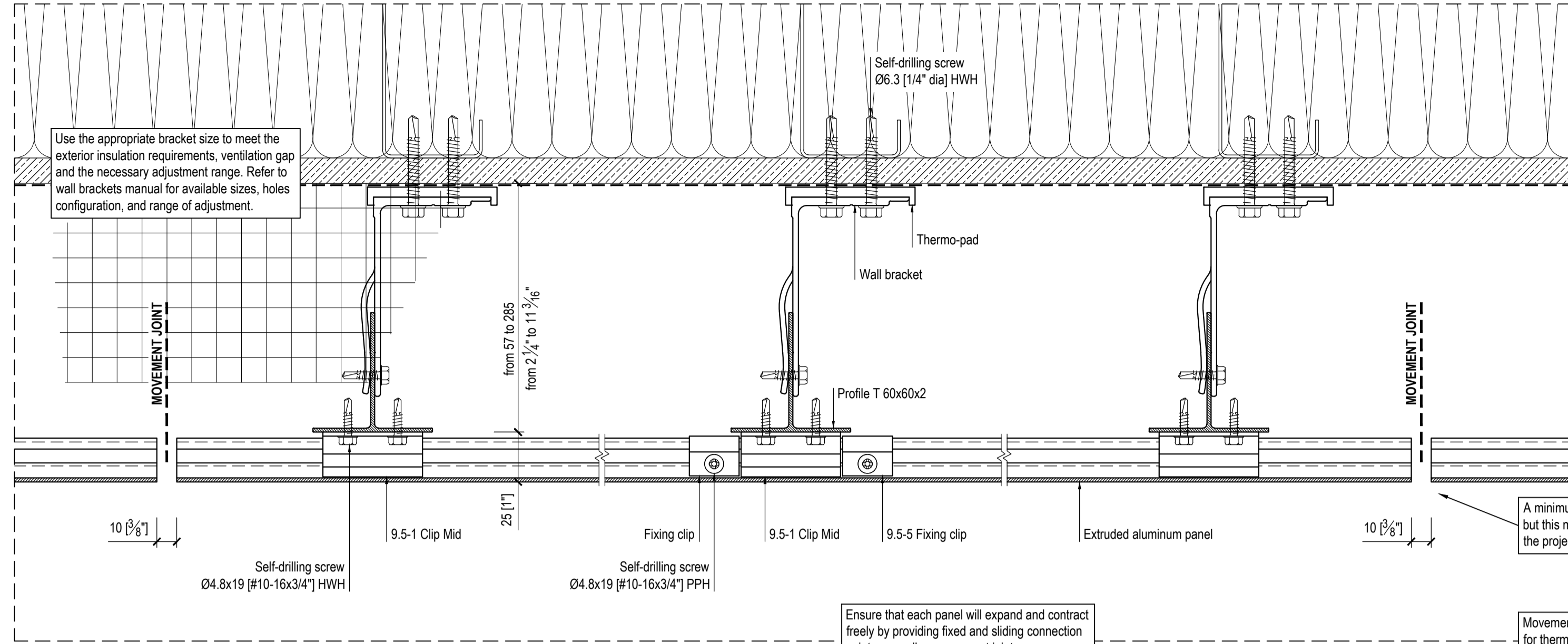
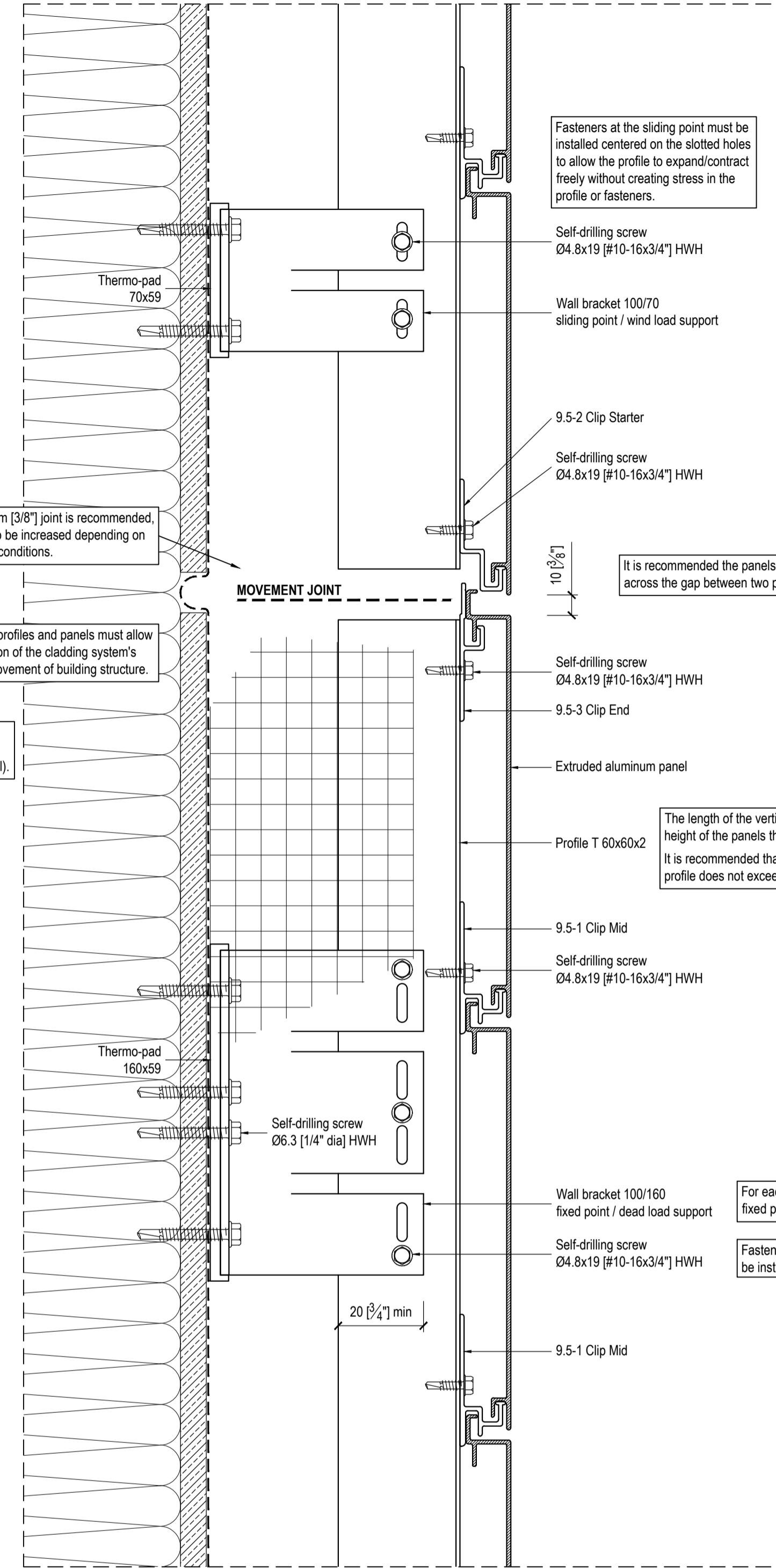


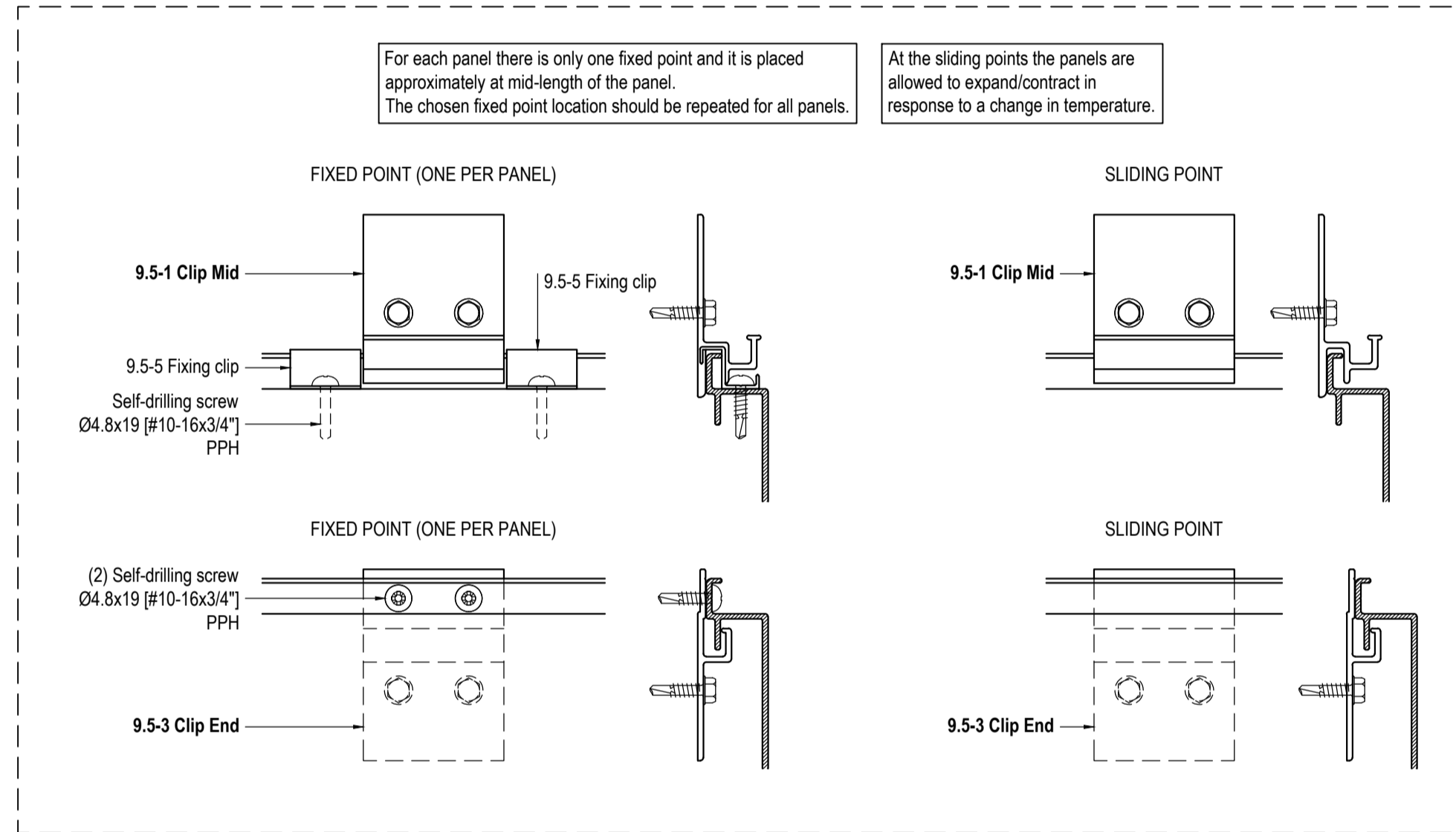
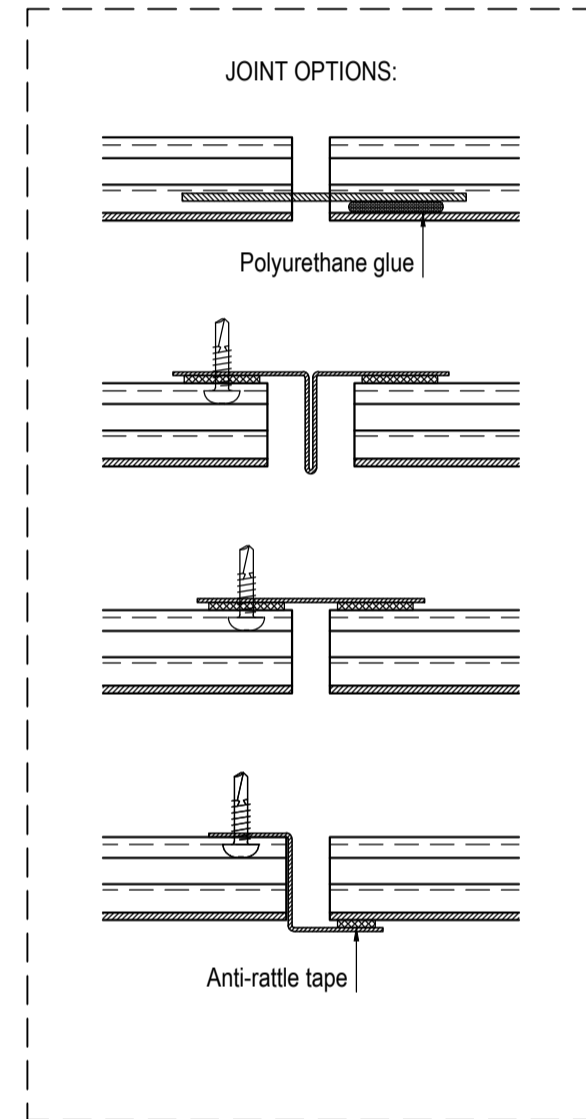
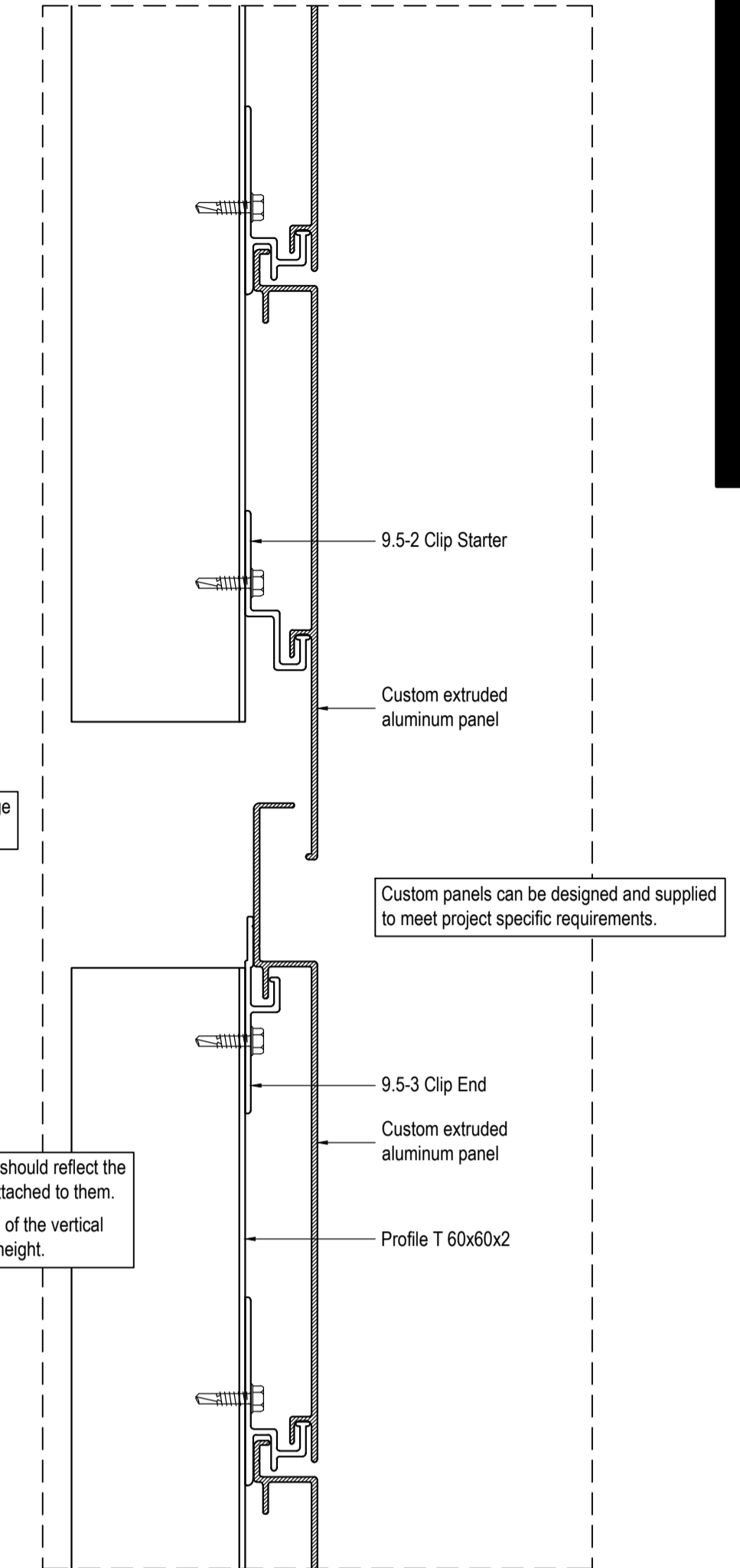
**PLAN DETAIL**



**SECTION DETAIL**



**SECTION DETAIL - HORIZONTAL JOINT**



The vertical profiles and the panels should not bridge across building movement joints (horizontal and vertical).

A minimum of 10 mm [3/8\"] joint is recommended, but this may need to be increased depending on the project-specific conditions.

Movement joints in profiles and panels must allow for thermal expansion of the cladding system's components and movement of building structure.

It is recommended the panels to not bridge across the gap between two profiles.

The length of the vertical profiles should reflect the height of the panels that will be attached to them. It is recommended that the length of the vertical profile does not exceed the floor height.

For each vertical profile there is only one fixed point, all others are sliding points.

Fasteners at fixed point must be installed in the round holes.

**GENERAL NOTES**

The maximum length of the vertical profiles, as well as the number and spacing of attachment points should be determined by project-specific calculations.

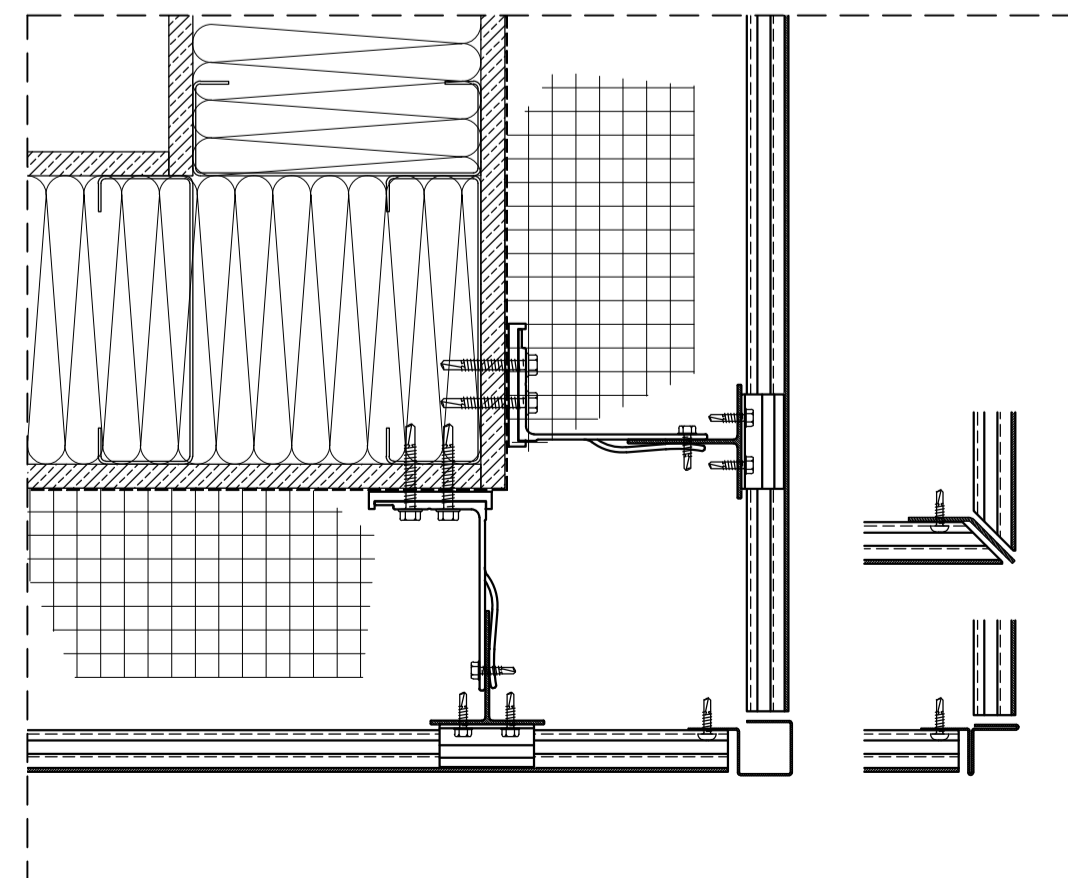
All fasteners should be 300 series stainless steel or as recommended by the fastener manufacturer for fasteners exposed to weather.

Minimum spacing and edge distances of fasteners must comply with codes of practice and manufacturer requirements, and should be considered in the design.

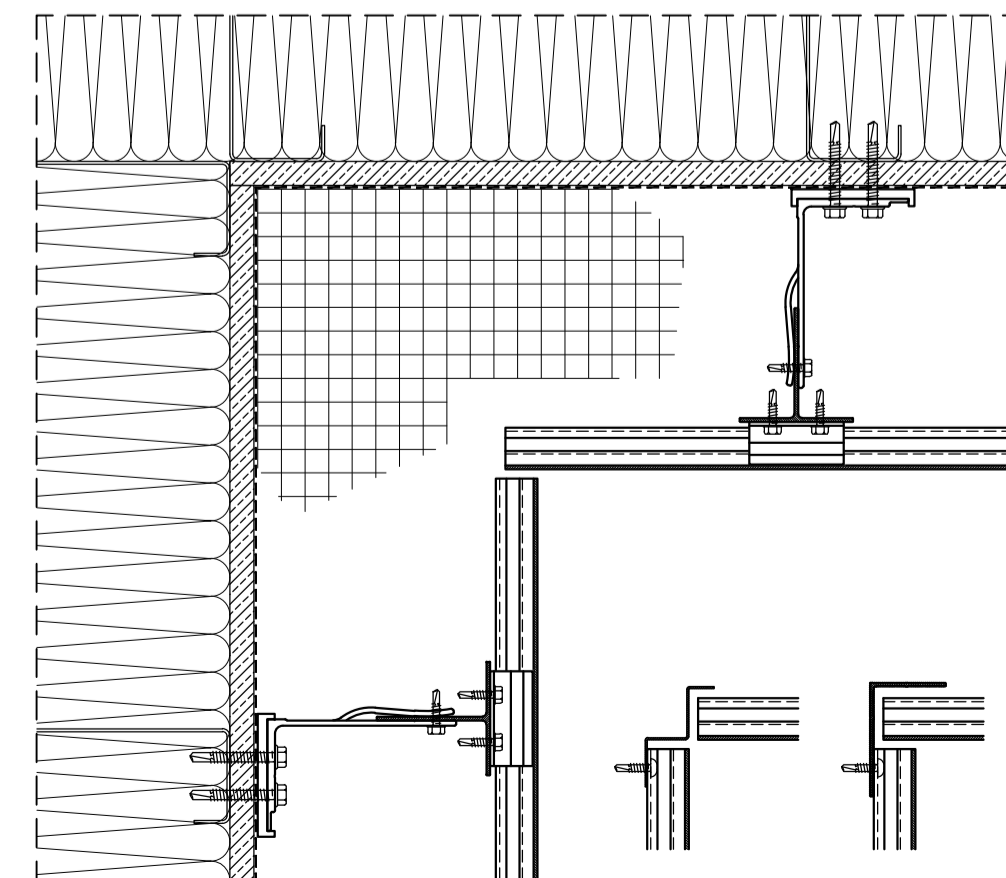
Provide the necessary movement gaps at wall openings - such as windows and doors, building corners and setbacks, etc.

**IF IN DOUBT - ASK**

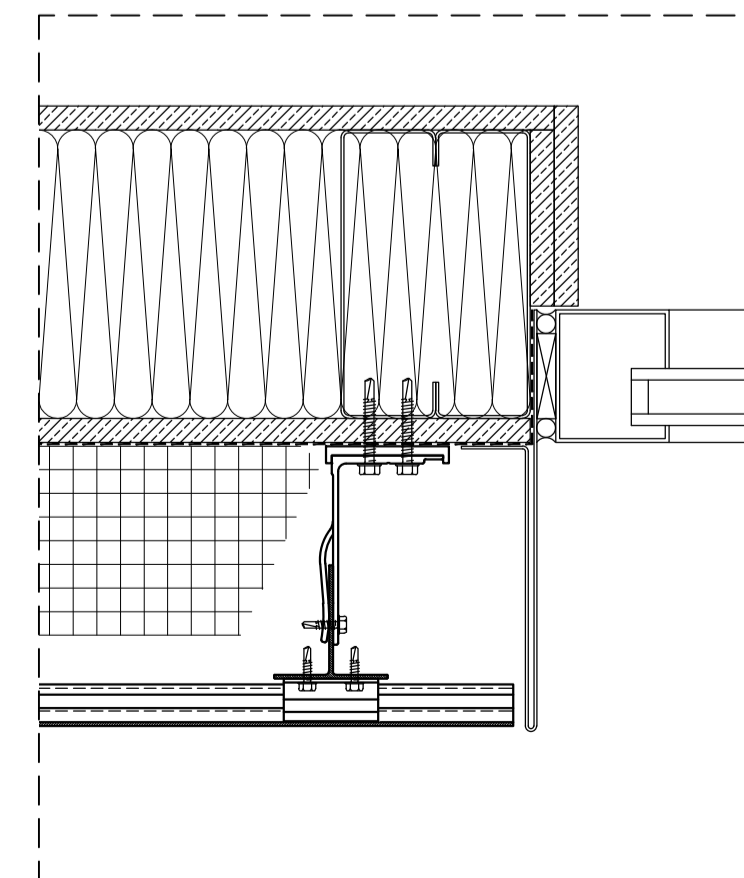
**PLAN DETAIL - OUTER CORNER**



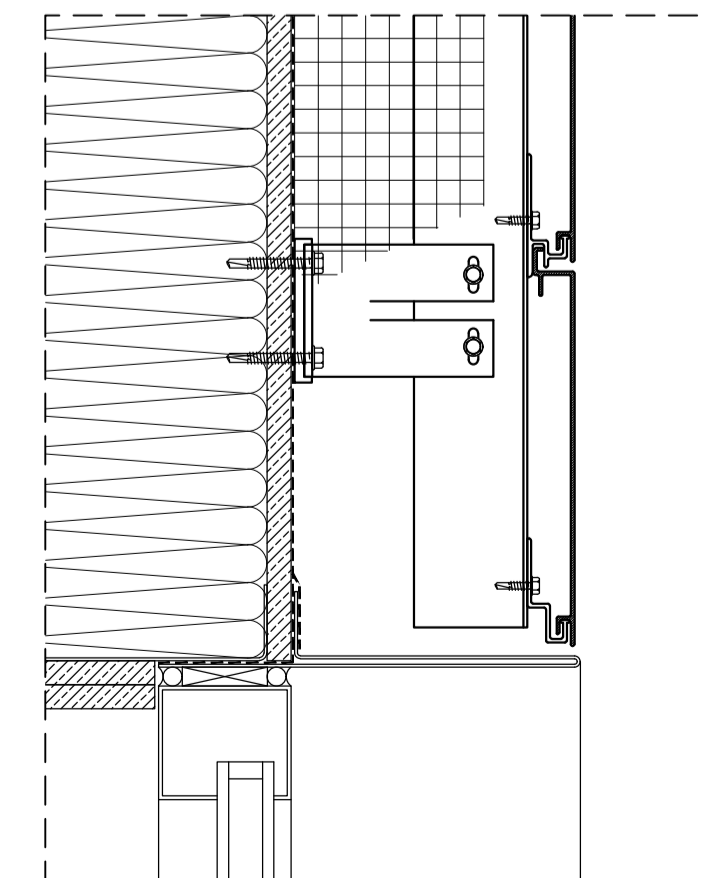
**PLAN DETAIL - INNER CORNER**



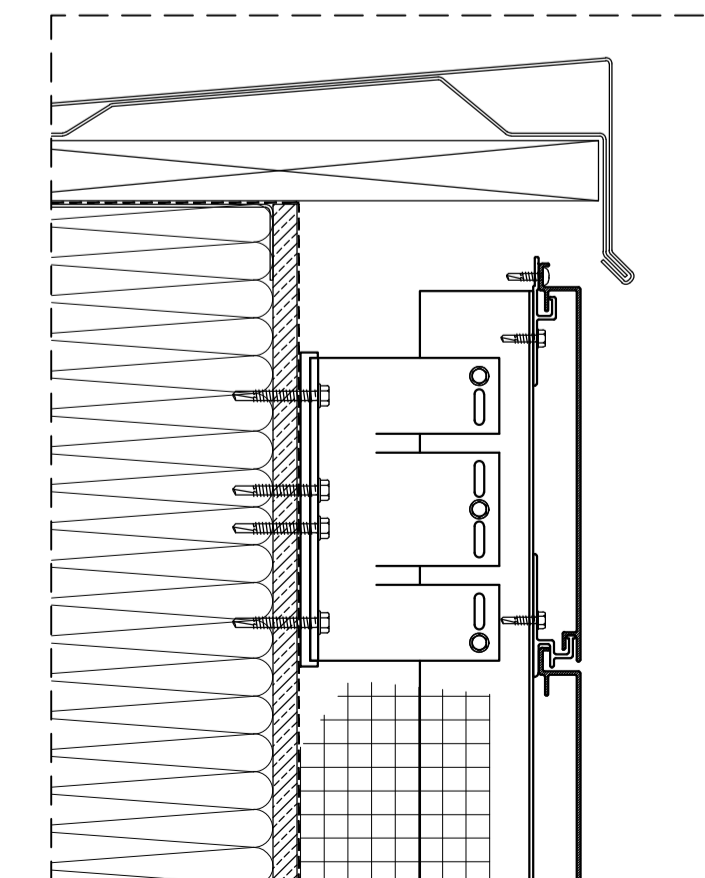
**PLAN DETAIL - WINDOW JAMB**



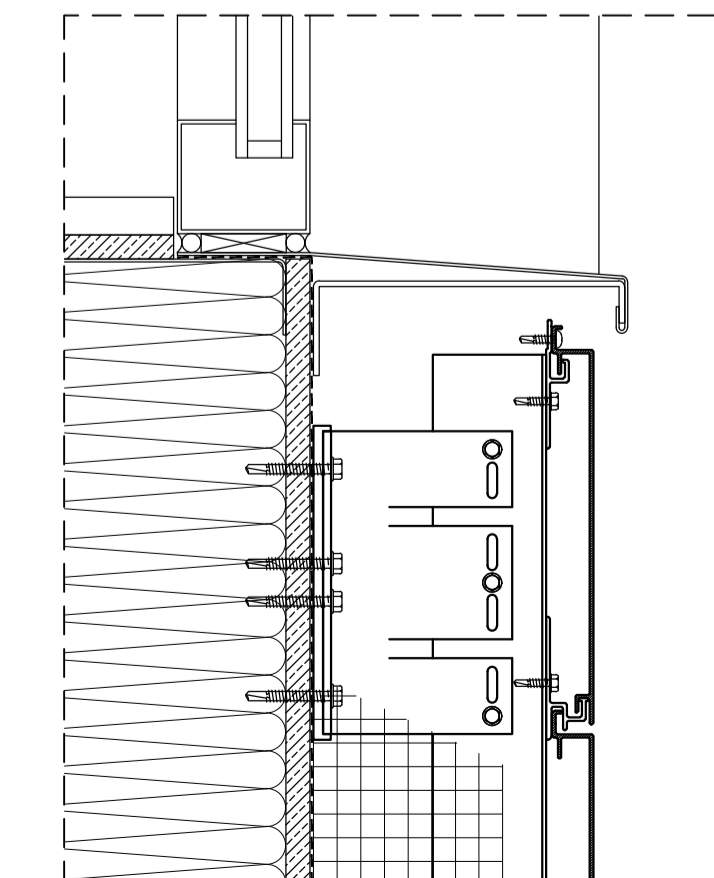
**SECTION DETAIL - WINDOW HEAD**



**SECTION DETAIL - COPING**



**SECTION DETAIL - WINDOW SILL**



**SECTION DETAIL - BASE**

