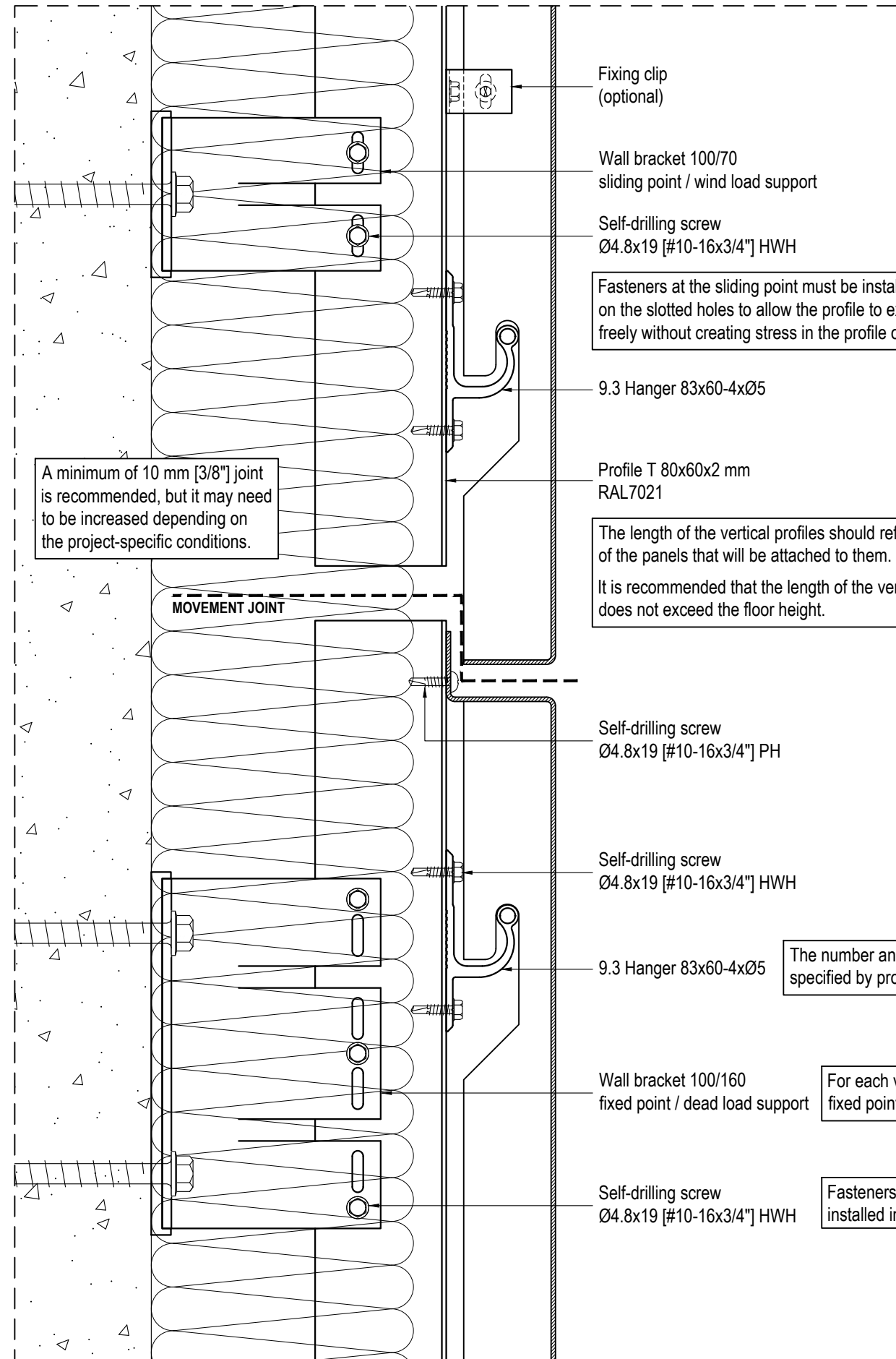


SECTION DETAIL



A minimum of 10 mm [3/8"] joint is recommended, but it may need to be increased depending on the project-specific conditions.

Fasteners at the sliding point must be installed centered on the slotted holes to allow the profile to expand/contract freely without creating stress in the profile or fasteners.

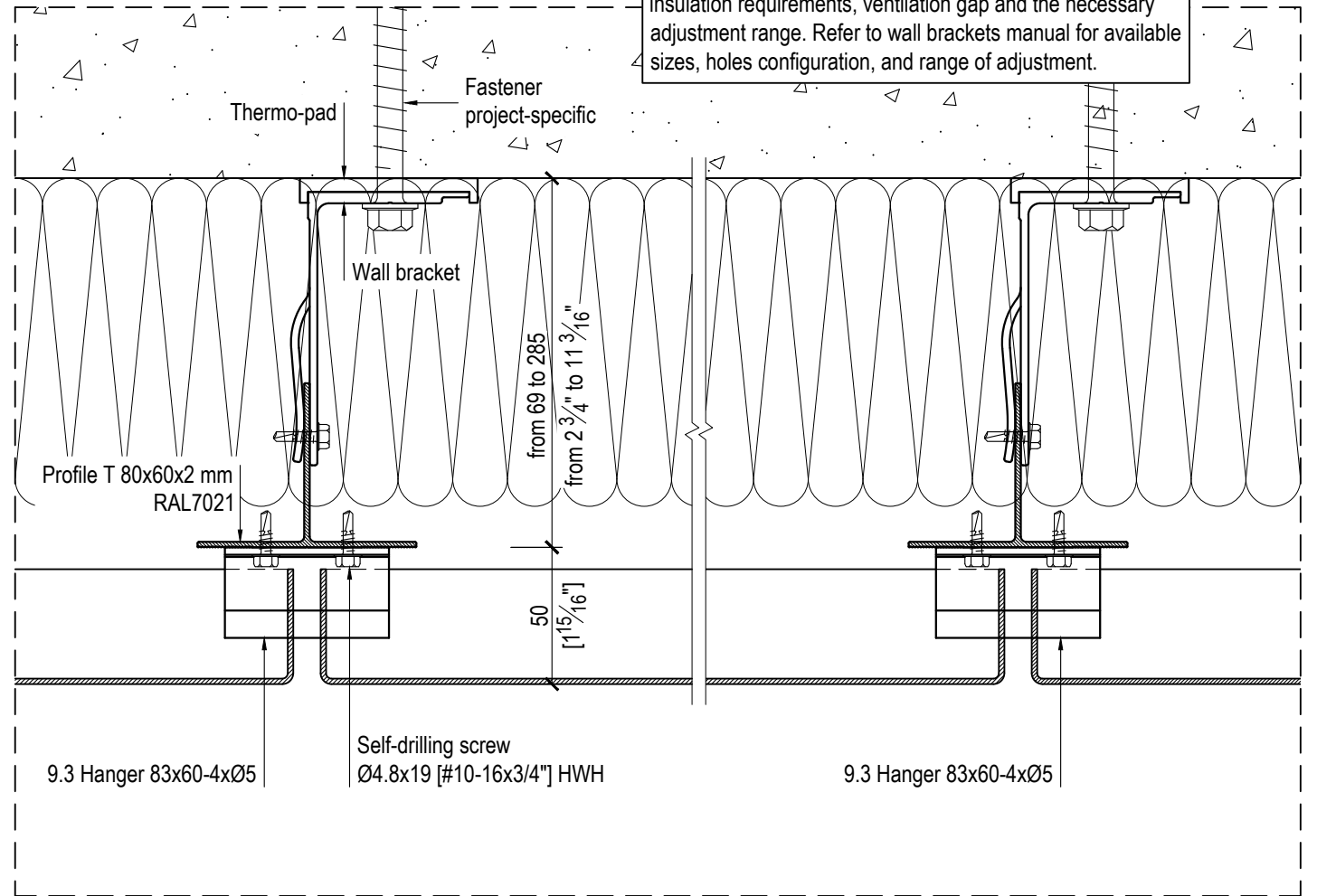
The length of the vertical profiles should reflect the height of the panels that will be attached to them. It is recommended that the length of the vertical profiles does not exceed the floor height.

The number and spacing should be specified by project-specific calculations.

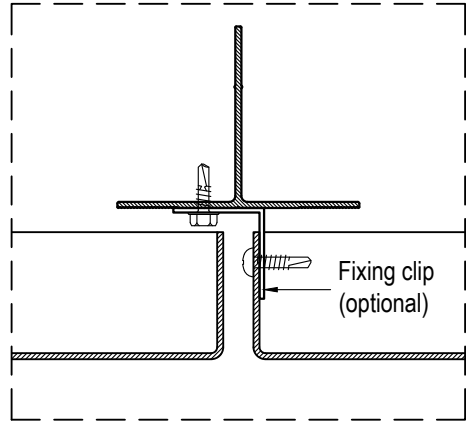
For each vertical profile there is only one fixed point; all others are sliding points.

Fasteners at fixed point must be installed in the round holes.

PLAN DETAIL



Use the appropriate bracket size to meet the exterior insulation requirements, ventilation gap and the necessary adjustment range. Refer to wall brackets manual for available sizes, holes configuration, and range of adjustment.



GENERAL NOTES

Movement joints in profiles and panels must allow for thermal expansion of the cladding system's components and movement of building structure.

The maximum length of the profiles, as well as the number and spacing of attachment points should be specified by project-specific calculations.

All fasteners should be 300 series stainless steel or as recommended by the fastener's manufacturer for fasteners exposed to weather.

Minimum spacing and edge distances of fasteners must comply with codes of practice and manufacturer's requirements, and should be considered in the design.

QV9.3
Mechanical fastening for formed metal panels