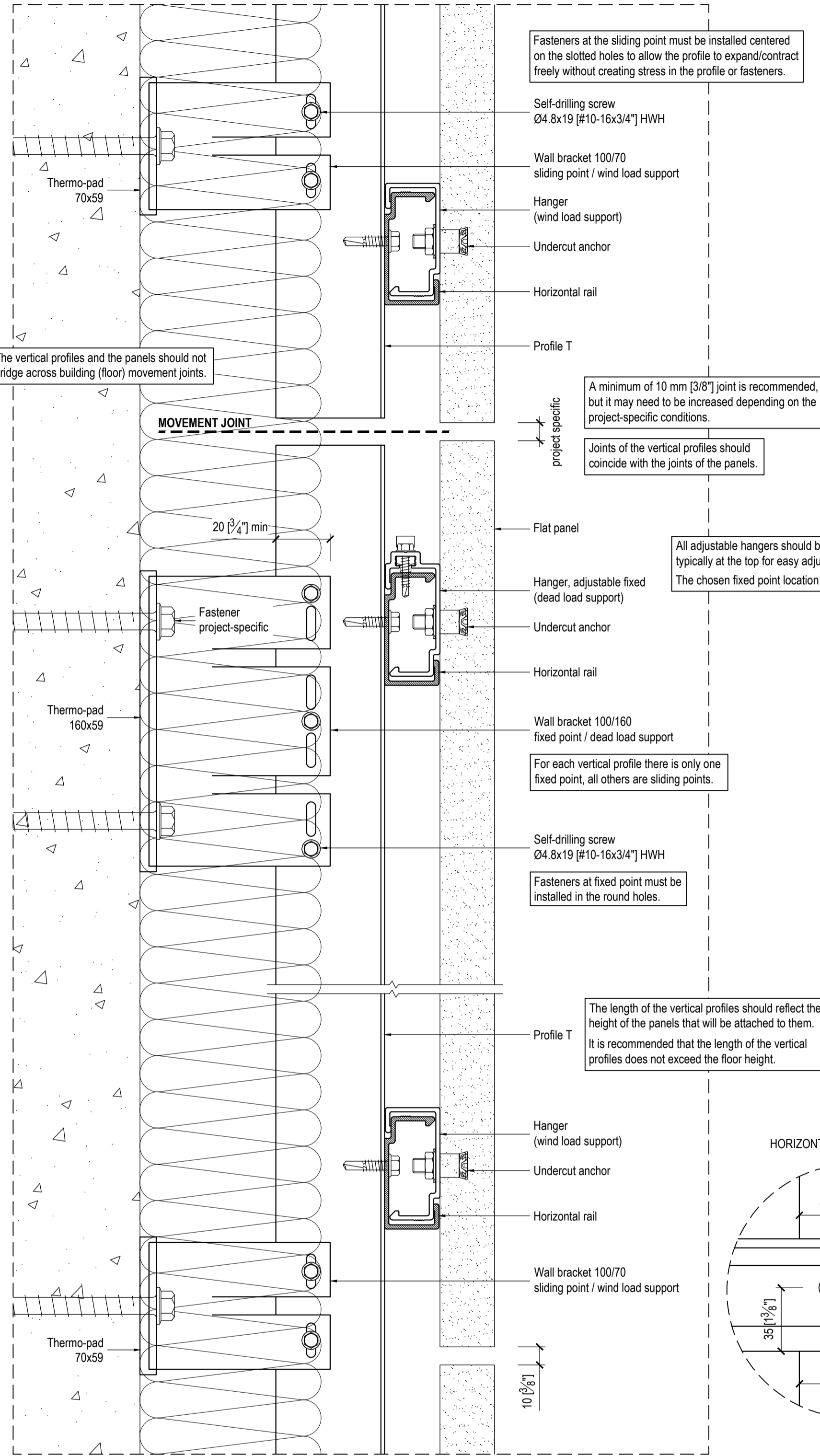
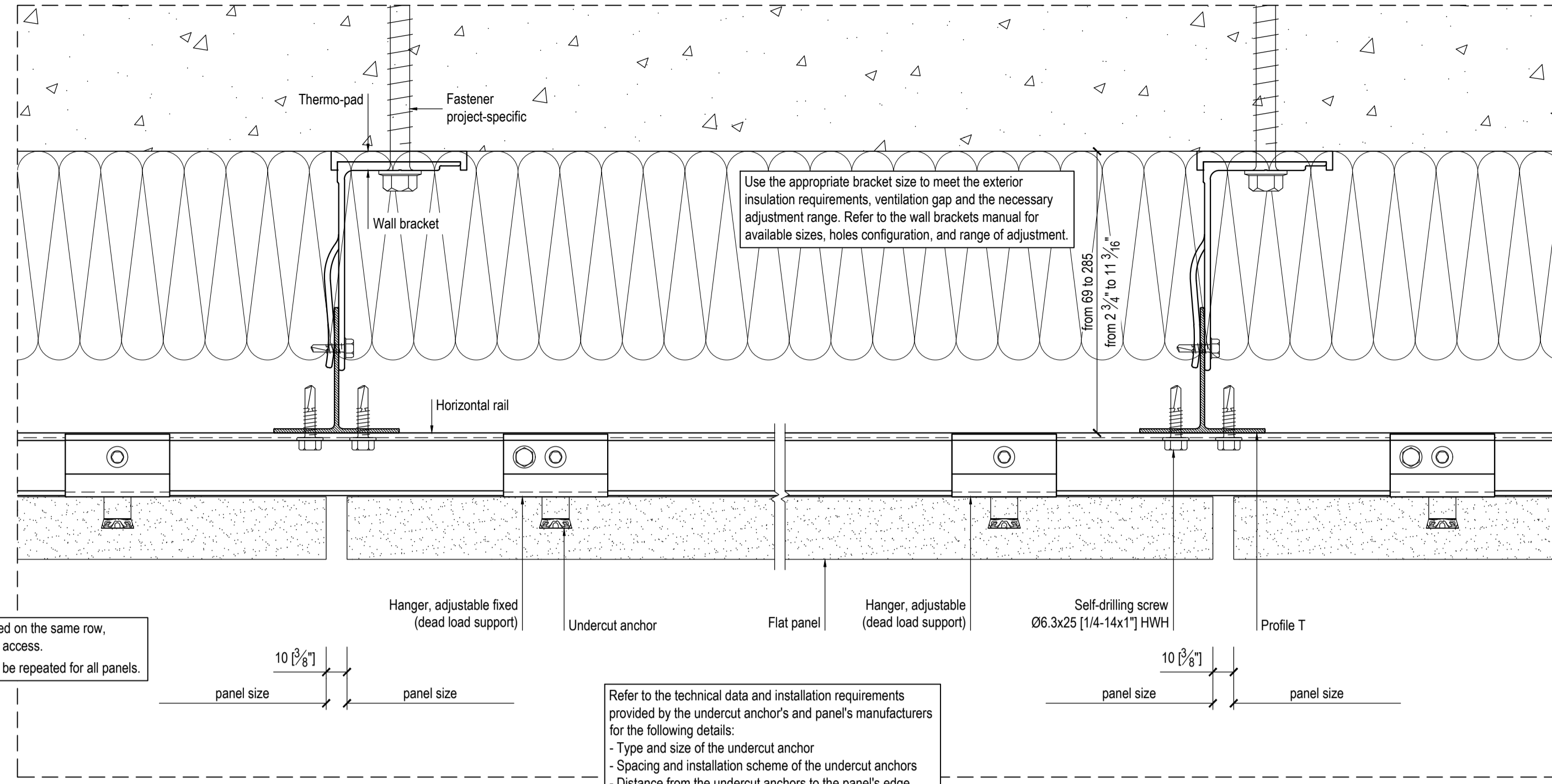


IF IN DOUBT - ASK

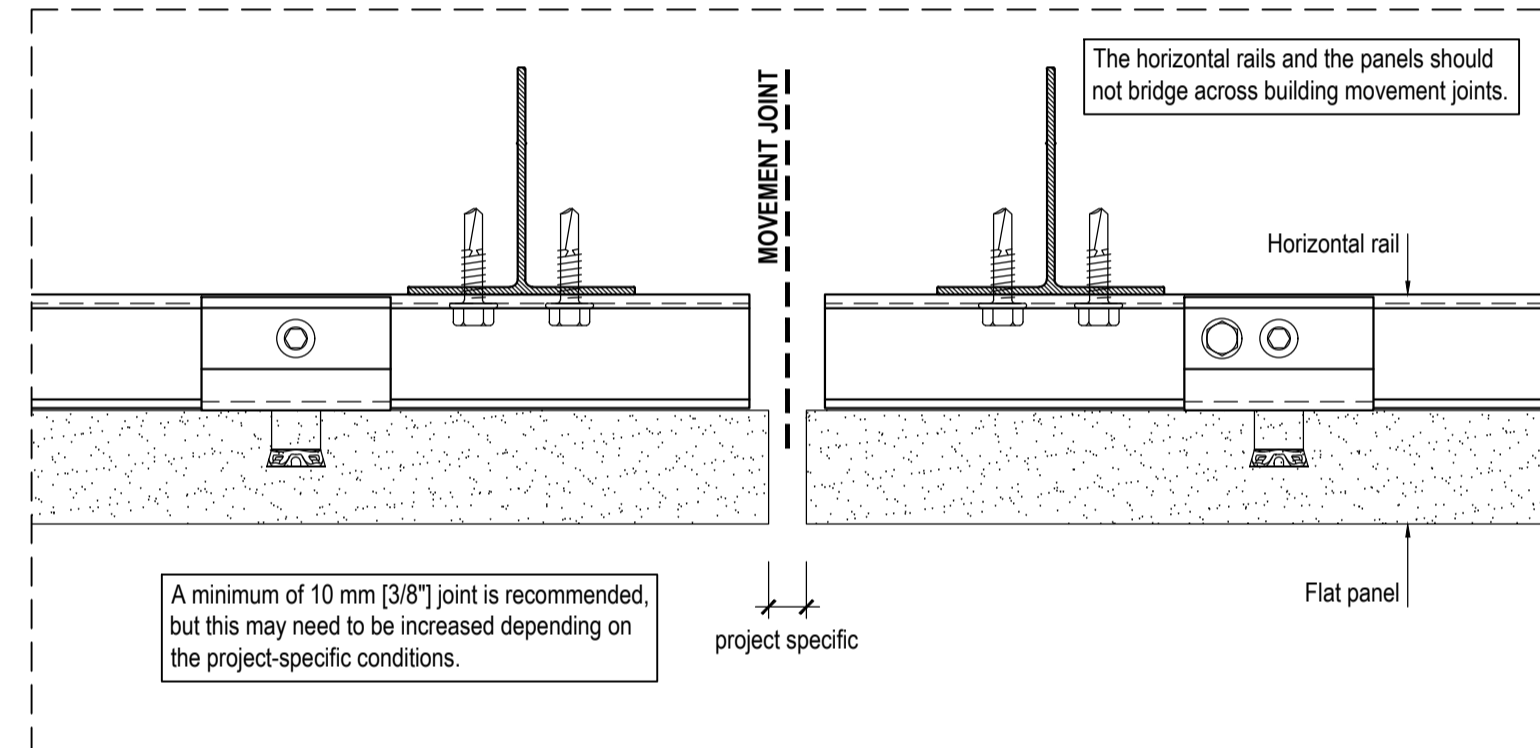
SECTION DETAIL



PLAN DETAIL



PLAN DETAIL - MOVEMENT JOINT



GENERAL NOTES

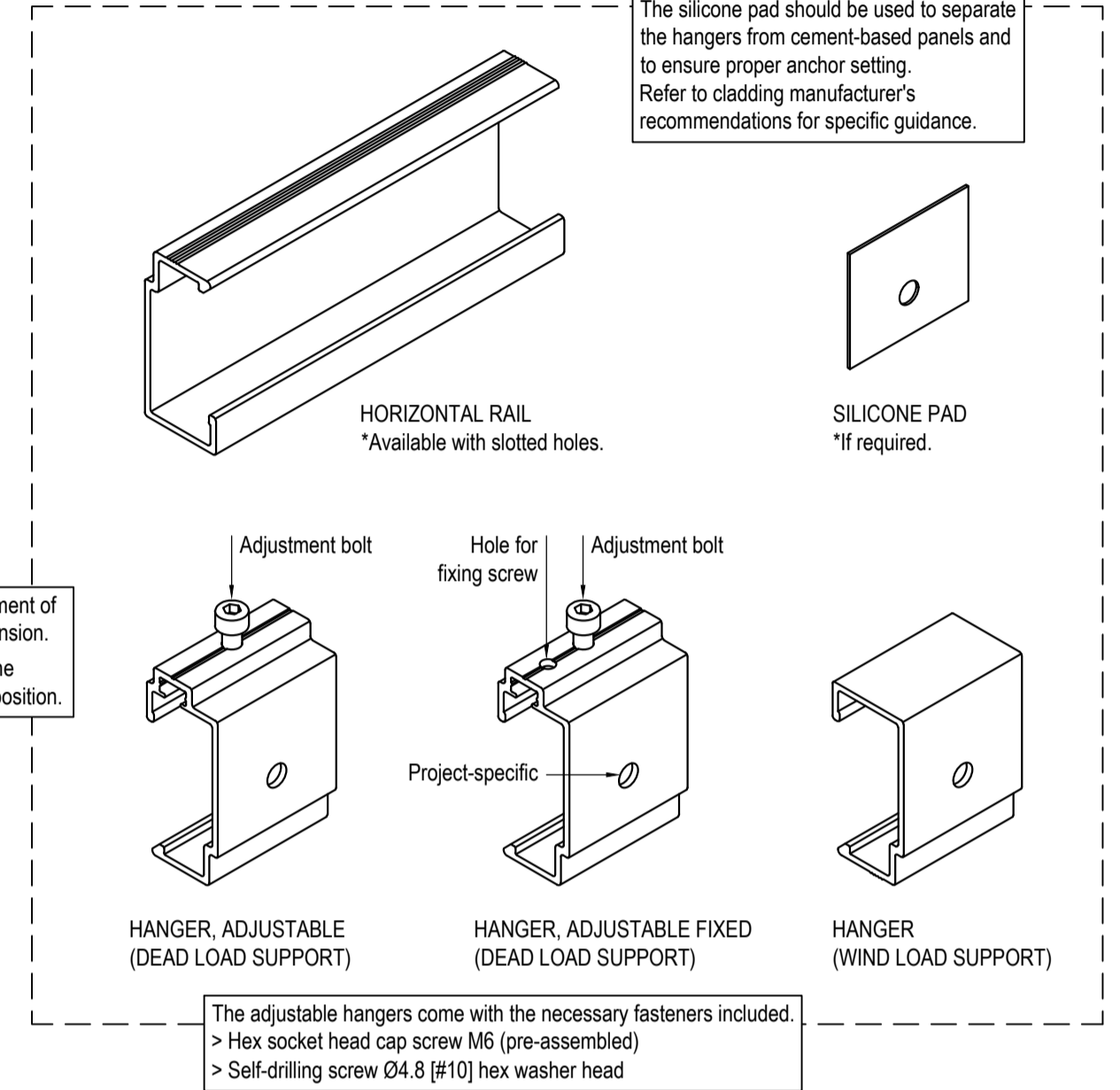
Movement joints in profiles and panels must allow for thermal expansion of the cladding system's components and the movement of building structure.

The maximum length of the rails, as well as the number and spacing of attachment points should be specified by project-specific calculations.

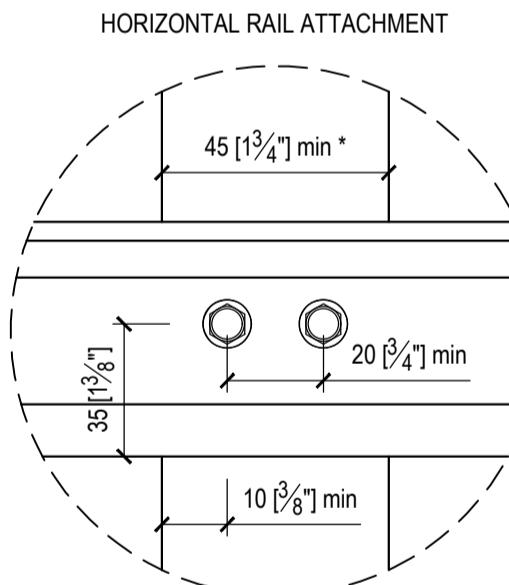
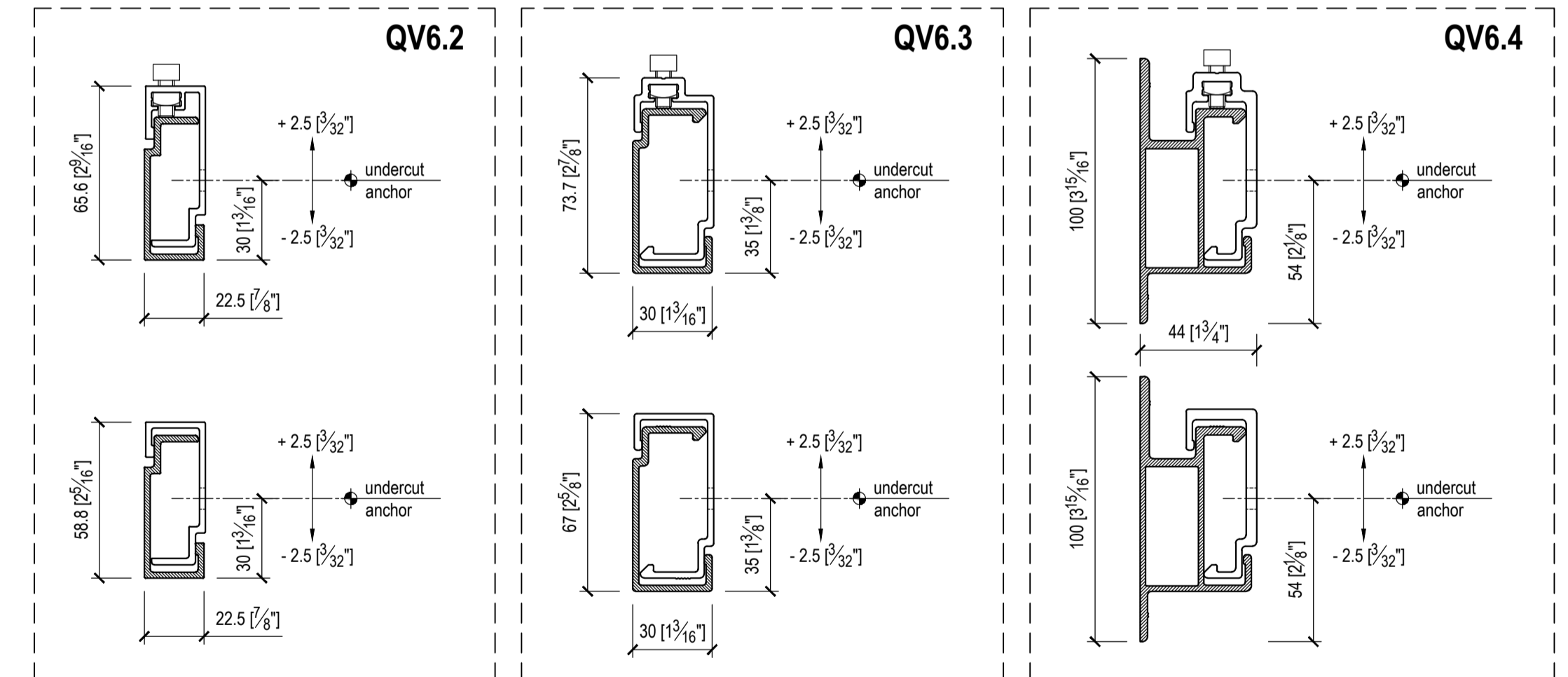
All fasteners should be 300 series stainless steel or as recommended by the fastener's manufacturer for fasteners exposed to weather.

Minimum spacing and edge distances of fasteners must comply with codes of practice and manufacturer requirements, and should be considered in the design.

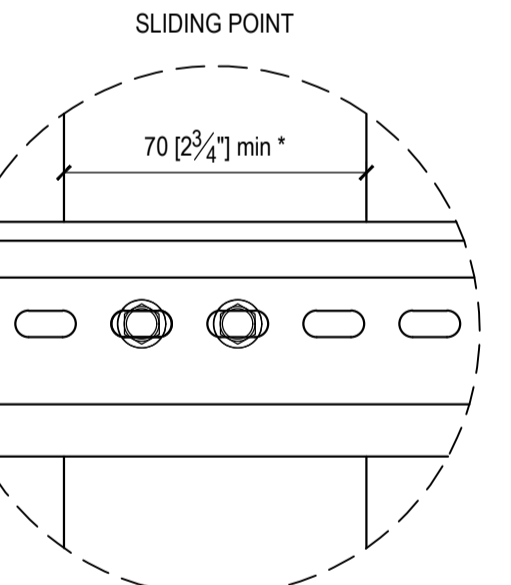
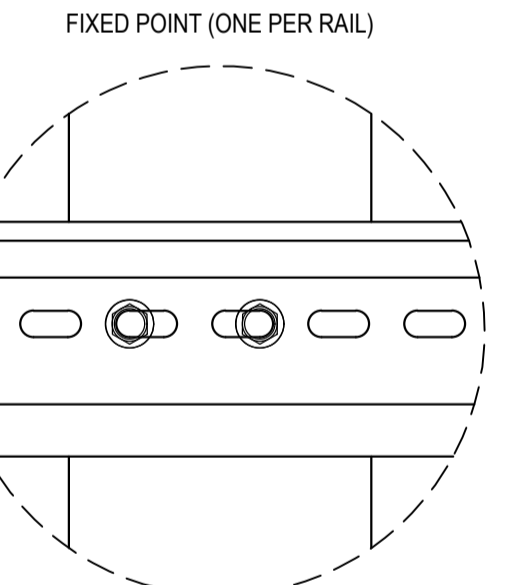
QV6 COMPONENTS



INSTALLATION PARAMETERS & RANGE OF ADJUSTMENT



If rails with slotted holes are used, they should be fixed at mid-length (fixed point) and allowed to expand towards the ends using slotted holes (sliding points).
The slotted holes are suitable for self-drilling screw Ø6.3x25 mm [1/4-14x1"]
Slotted holes are spaced at 25.4 mm [1"] O.C.
The number of fasteners should be specified by project-specific calculations.

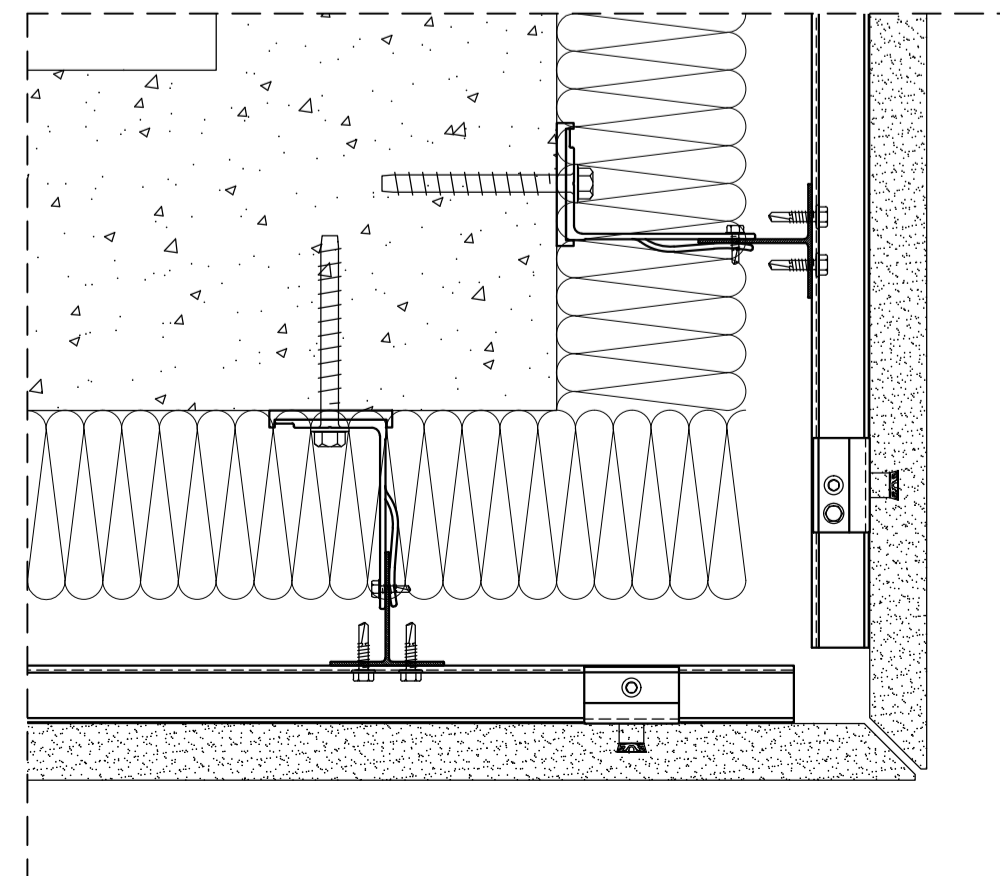


* In case of two (2) fasteners.
The flange of vertical profiles should be wide enough to accommodate the number of screws, the minimum spacing and edge distance, and installation tolerances.

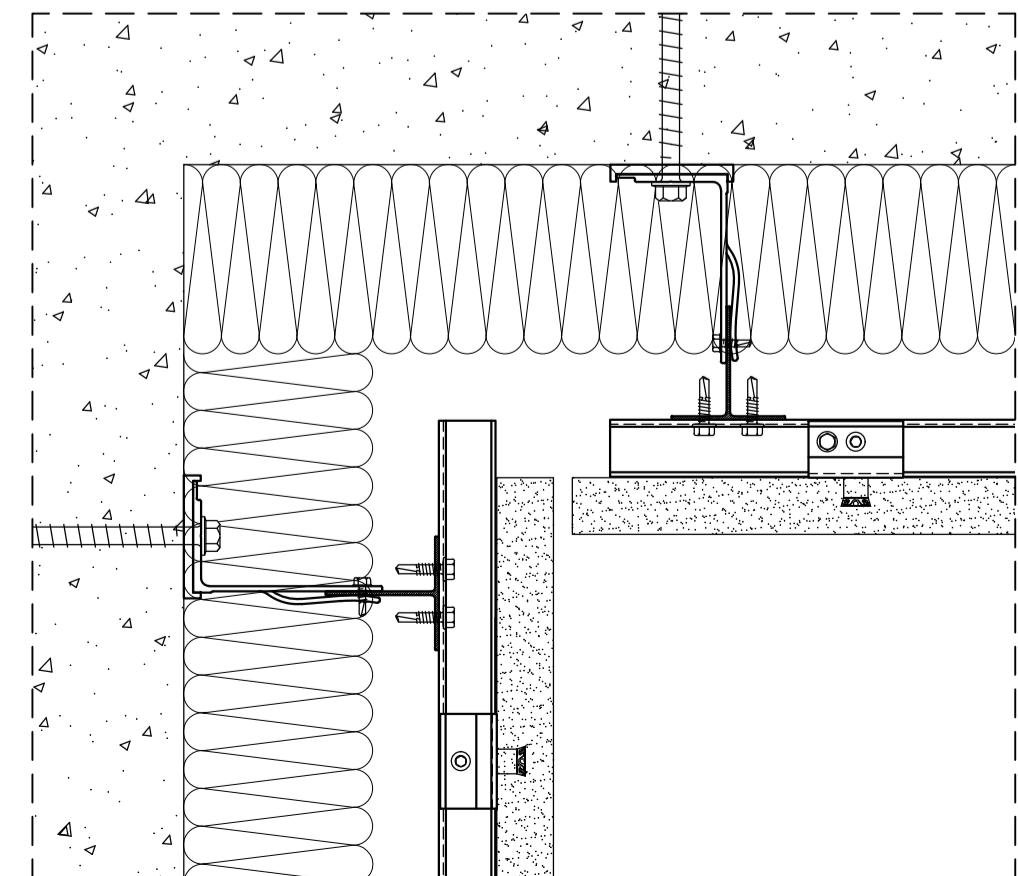
Fasteners must be installed in the opposite ends of the slotted holes.

Fasteners must be installed centered on the slotted holes to allow the rail to expand/contract freely.

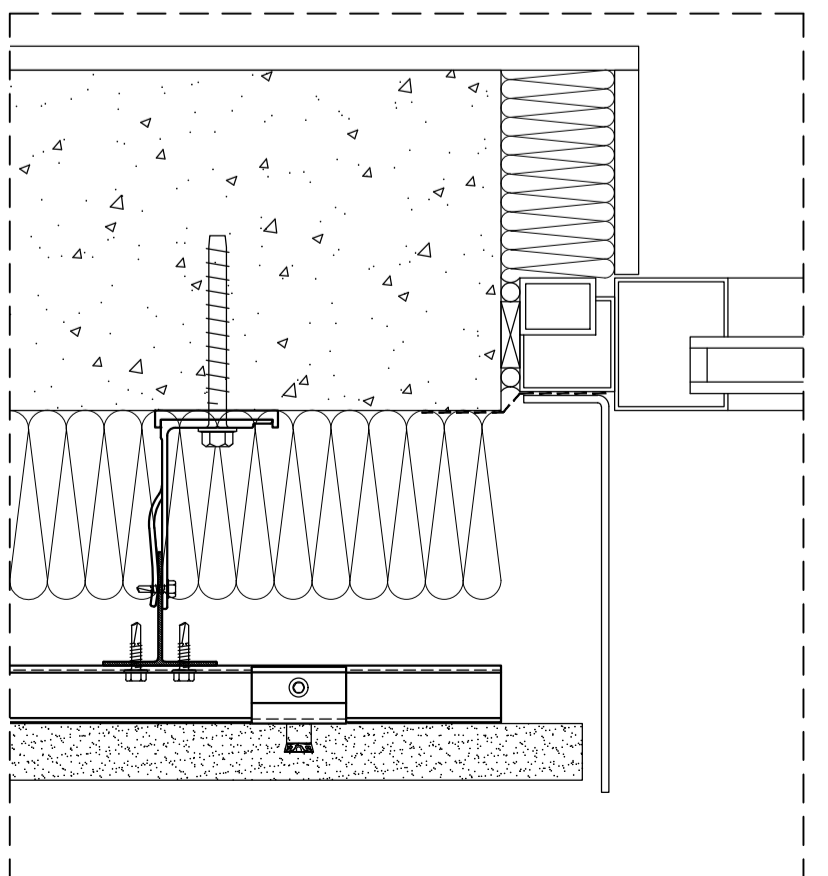
PLAN DETAIL - OUTER CORNER



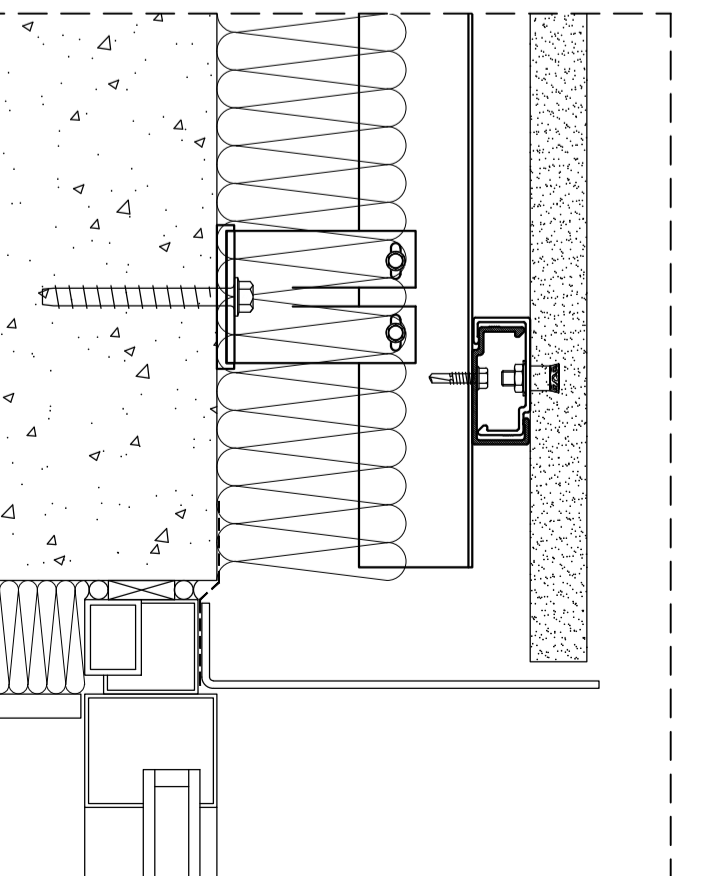
PLAN DETAIL - INNER CORNER



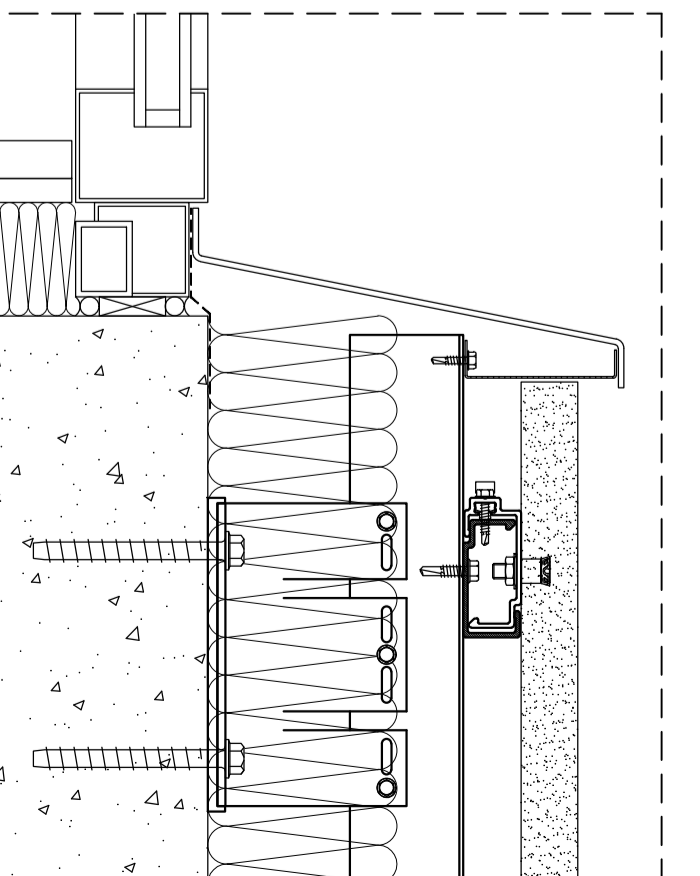
PLAN DETAIL - WINDOW JAMB



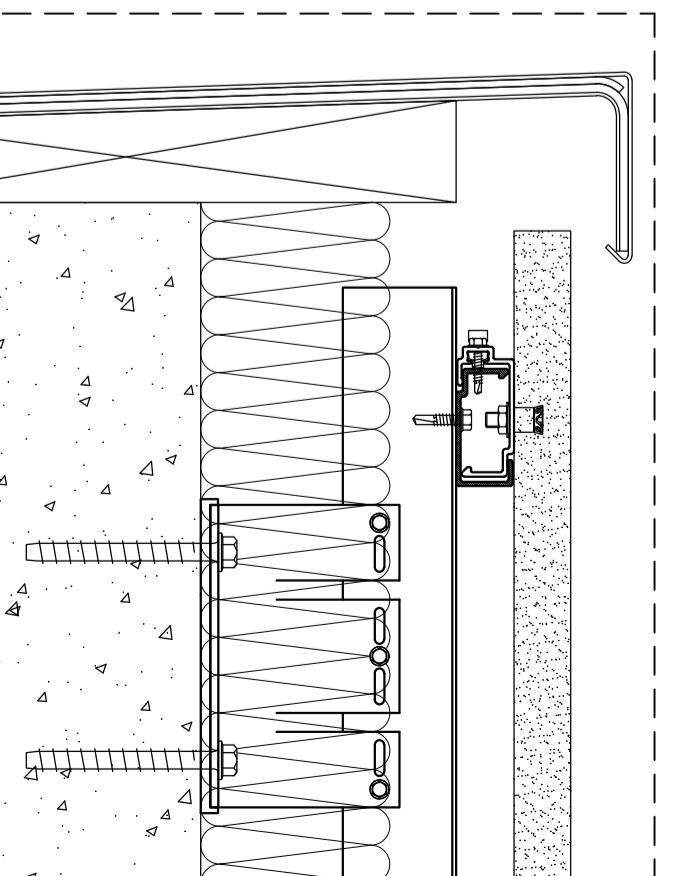
SECTION DETAIL - WINDOW HEAD



SECTION DETAIL - WINDOW SILL



SECTION DETAIL - COPING



SECTION DETAIL - BASE

