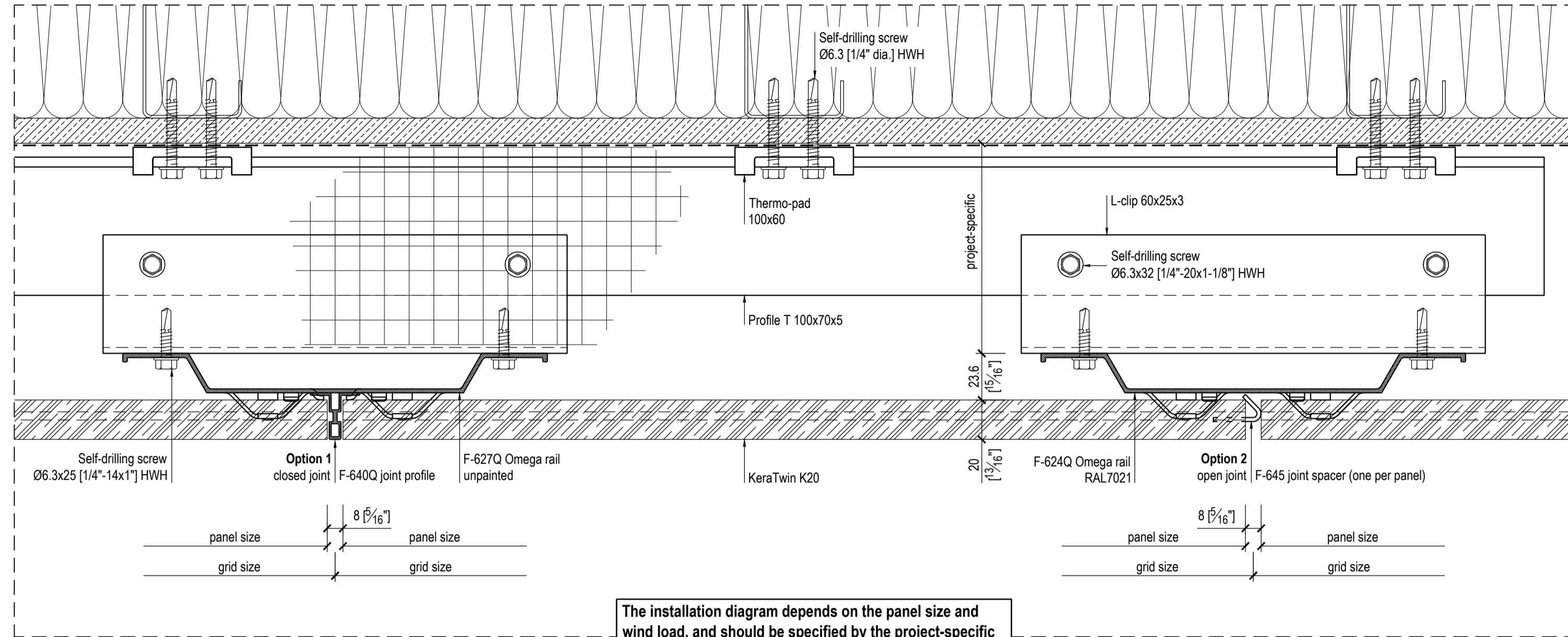
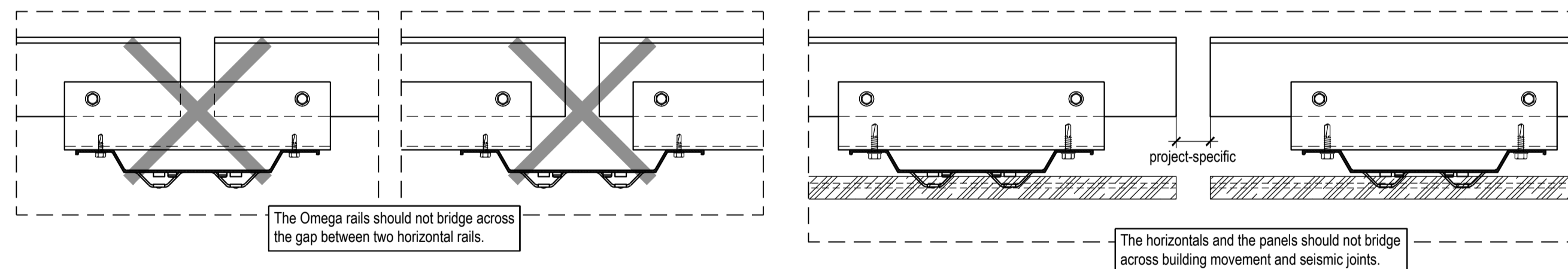
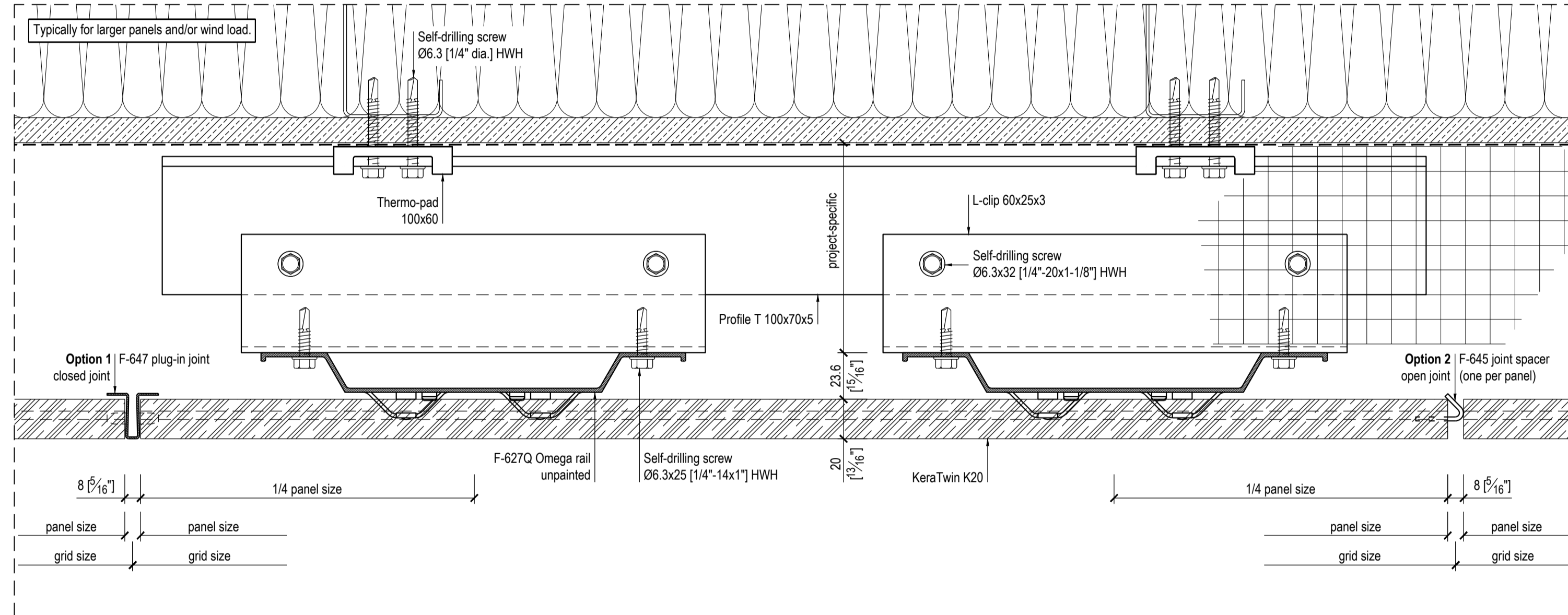


PLAN DETAIL - VERTICAL RAILS AT JOINTS

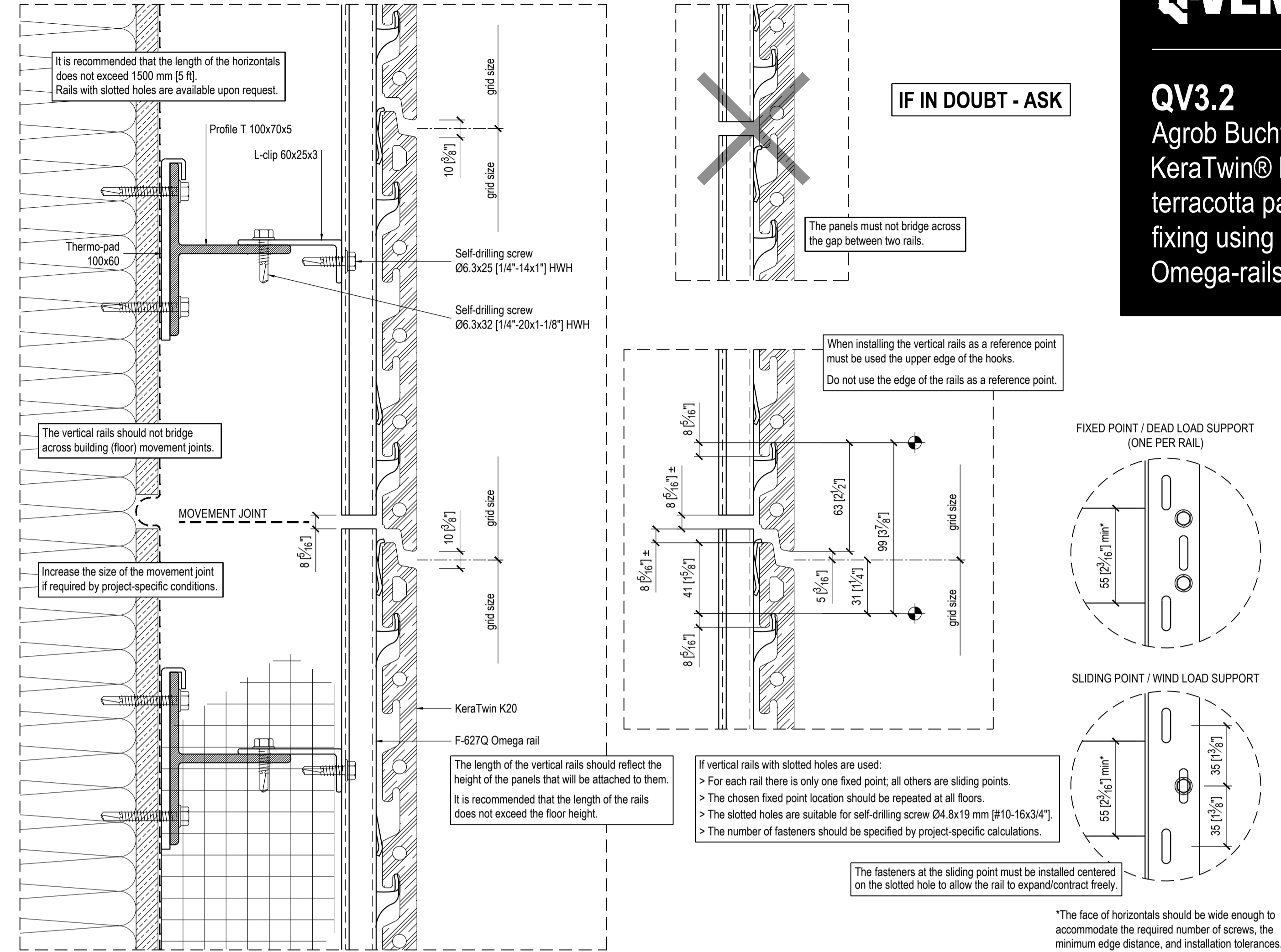


PLAN DETAIL - VERTICAL RAILS AT 1/4 PANEL SIZE

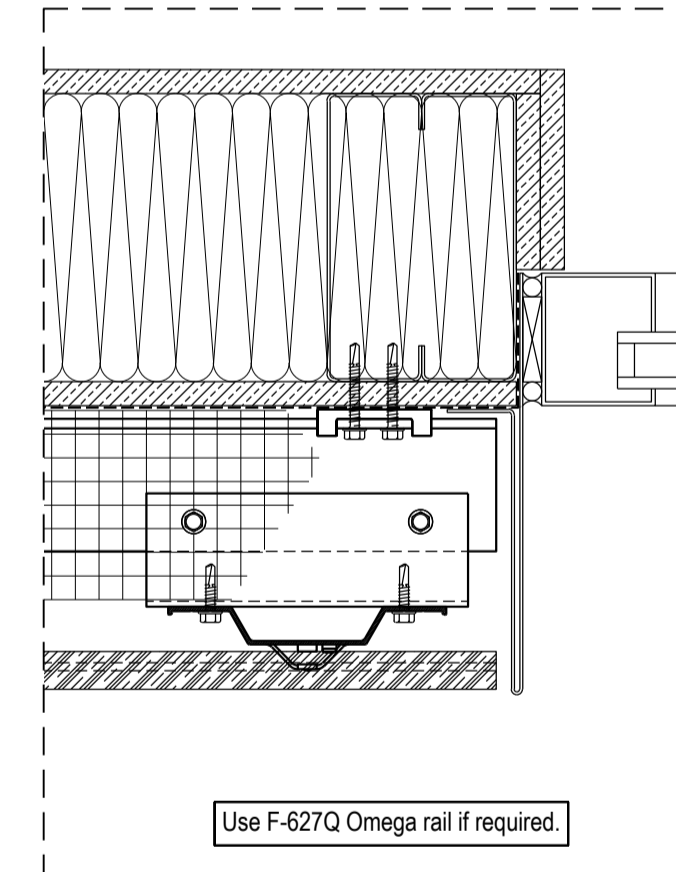


GENERAL NOTES
The maximum length of the rails, as well as the number and spacing of attachment points should be specified by project-specific calculations. All fasteners should be 300 series stainless steel or as recommended by the fastener manufacturer for fasteners exposed to weather. Minimum spacing and edge distances of fasteners must comply with codes of practice and manufacturer's requirements, and should be considered in the design.

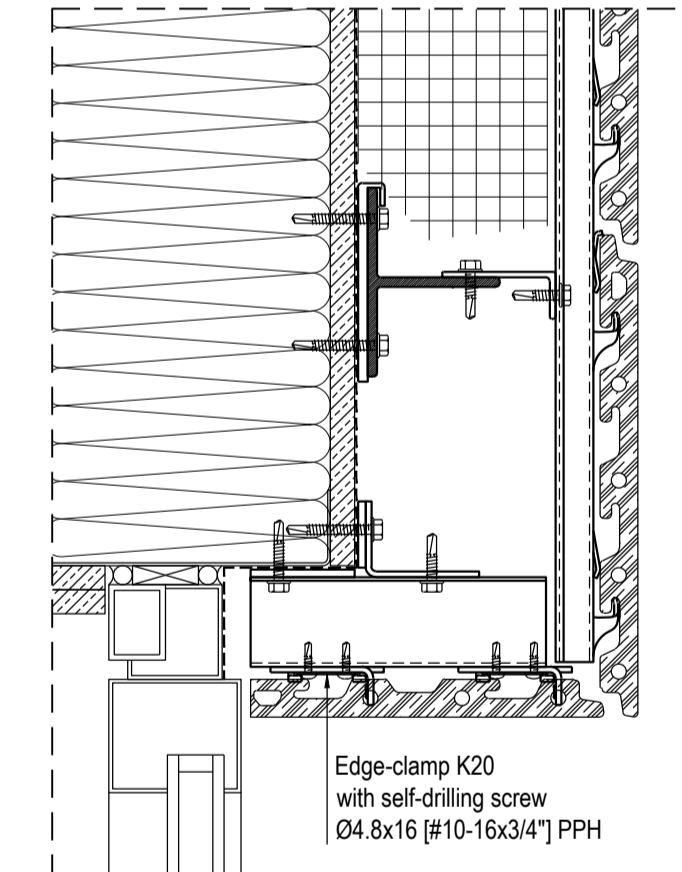
SECTION DETAIL - HORIZONTAL JOINT



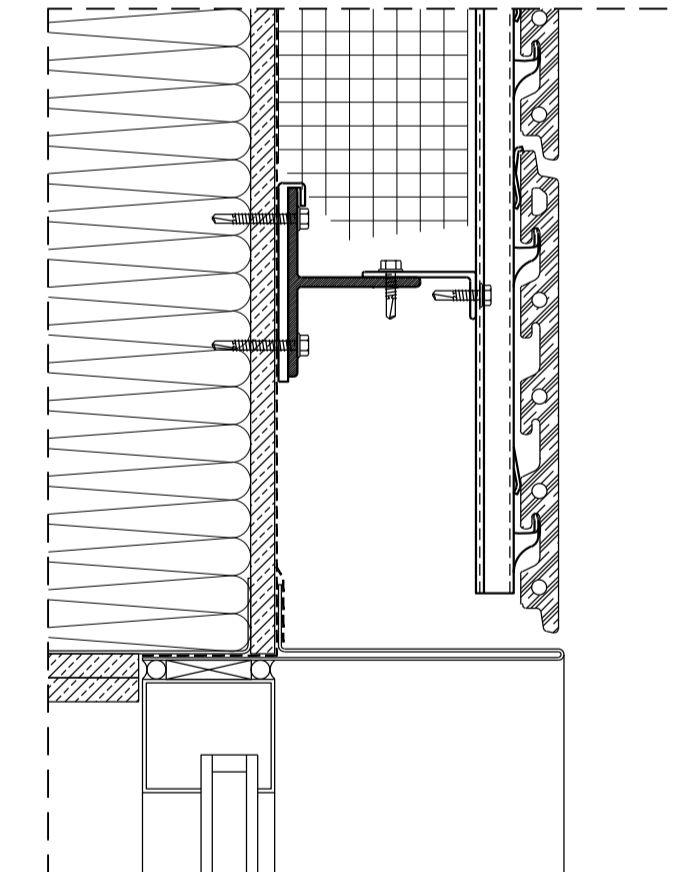
PLAN DETAIL - WINDOW JAMB



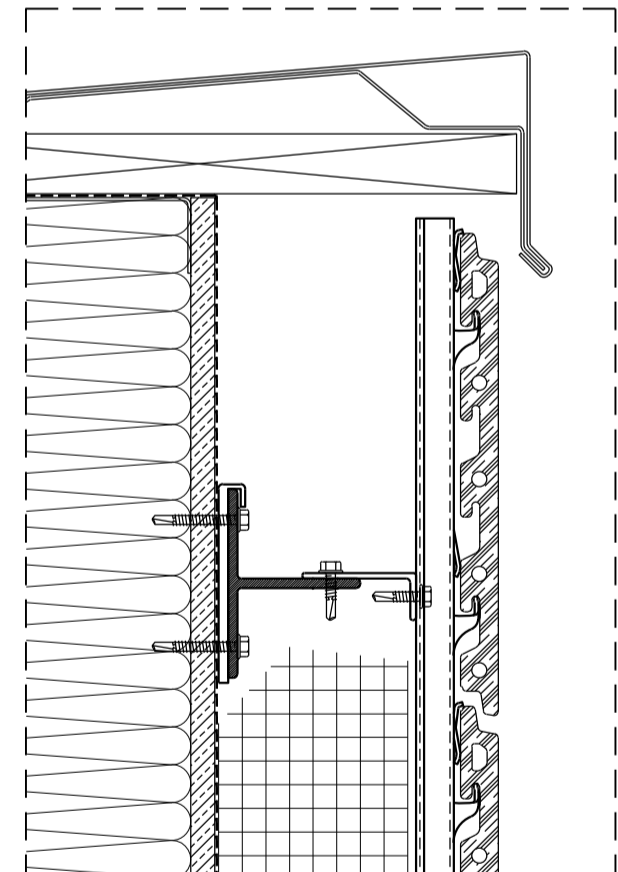
SECTION DETAIL - WINDOW HEAD



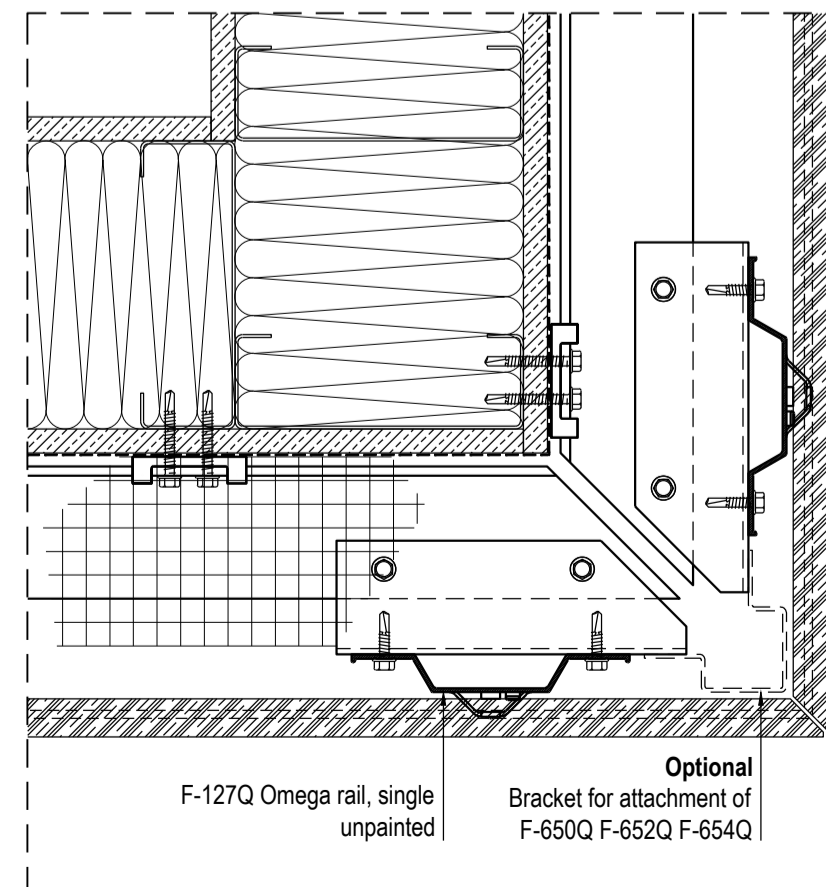
SECTION DETAIL - WINDOW HEAD



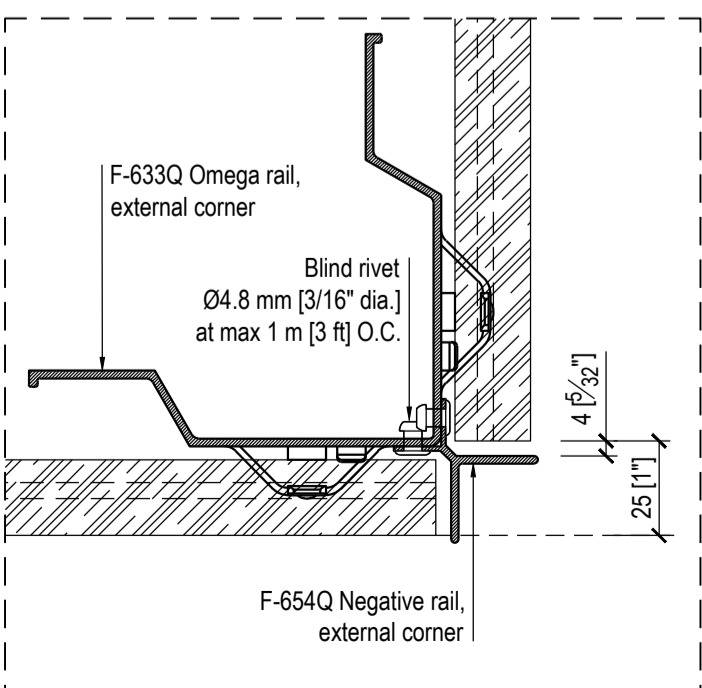
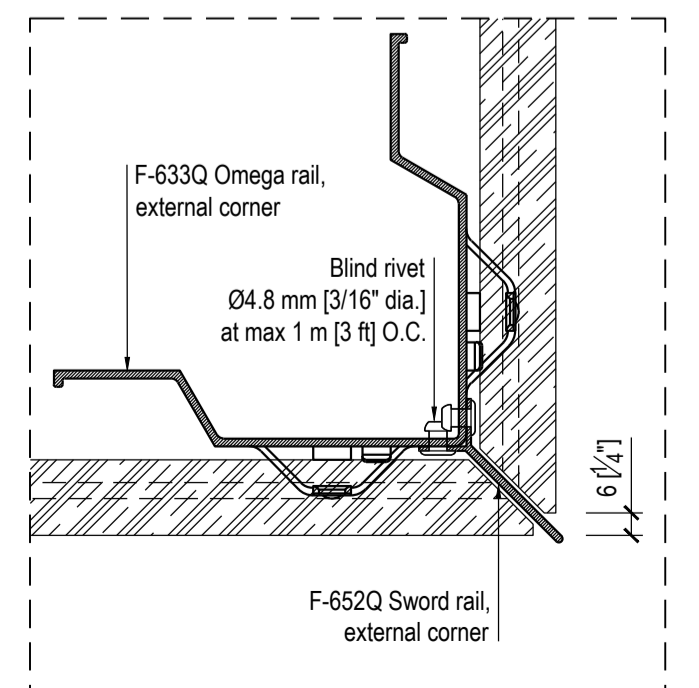
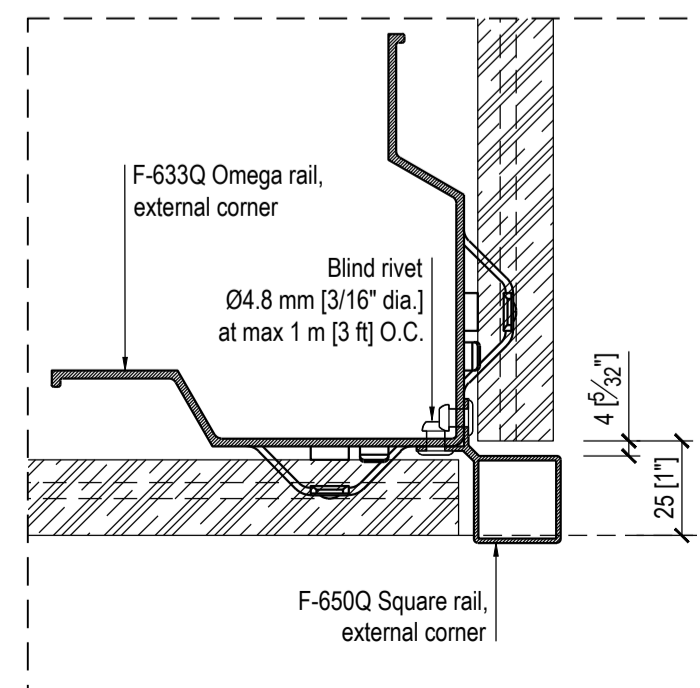
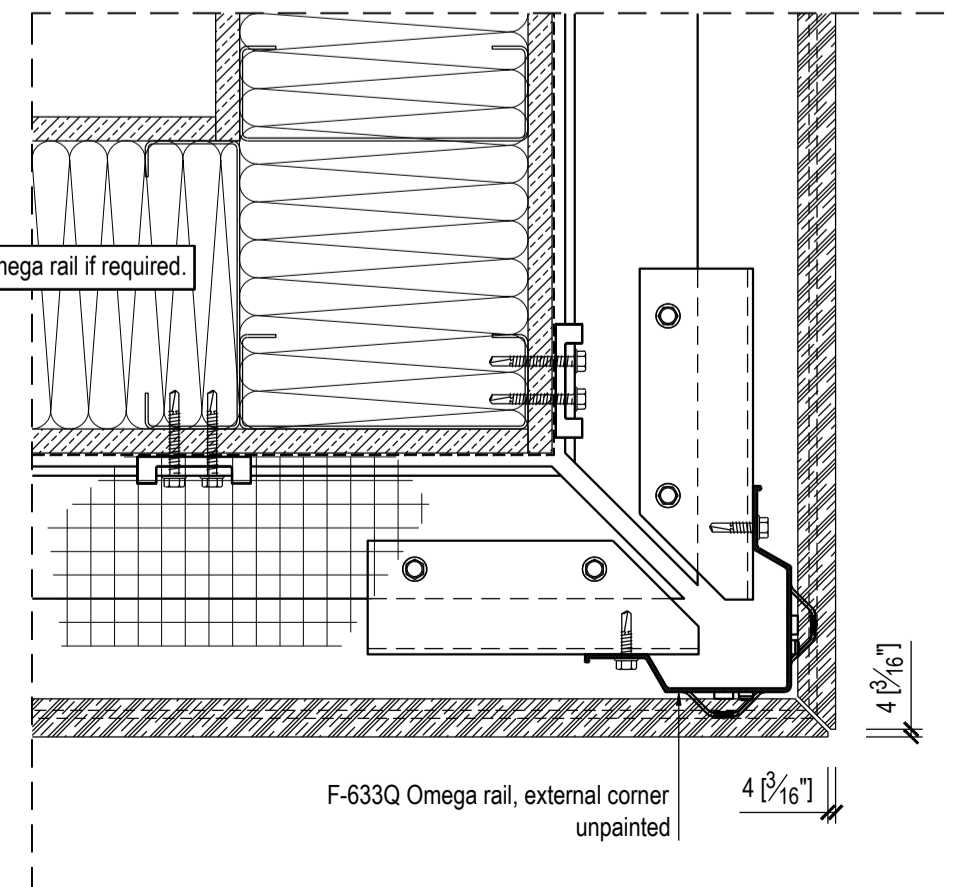
SECTION DETAIL - COPING



PLAN DETAIL - OUTER CORNER

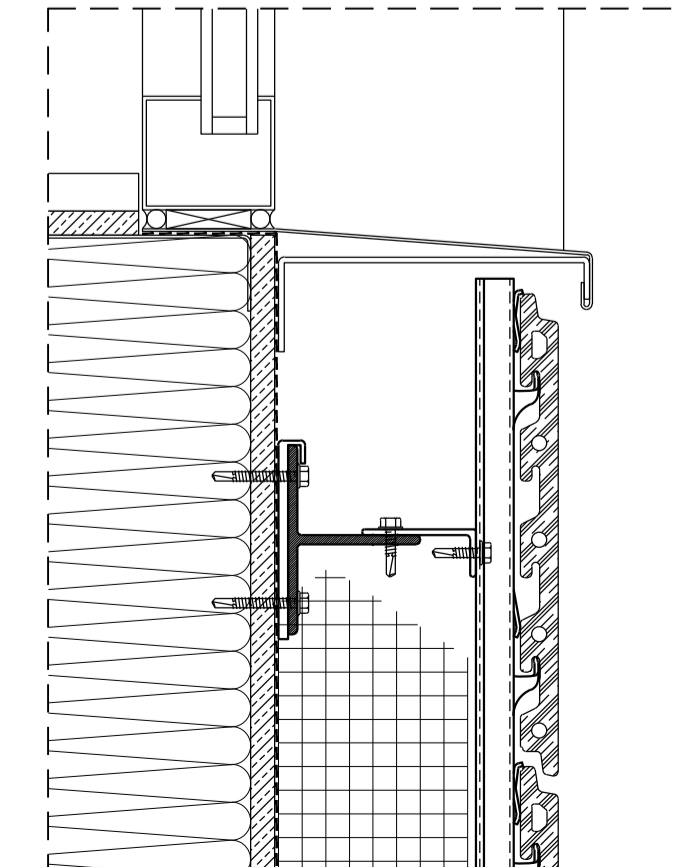


PLAN DETAIL - OUTER CORNER



Provide the necessary movement gaps at wall openings - such as windows and doors, building corners and setbacks, etc.

SECTION DETAIL - WINDOW SILL



SECTION DETAIL - BASE

