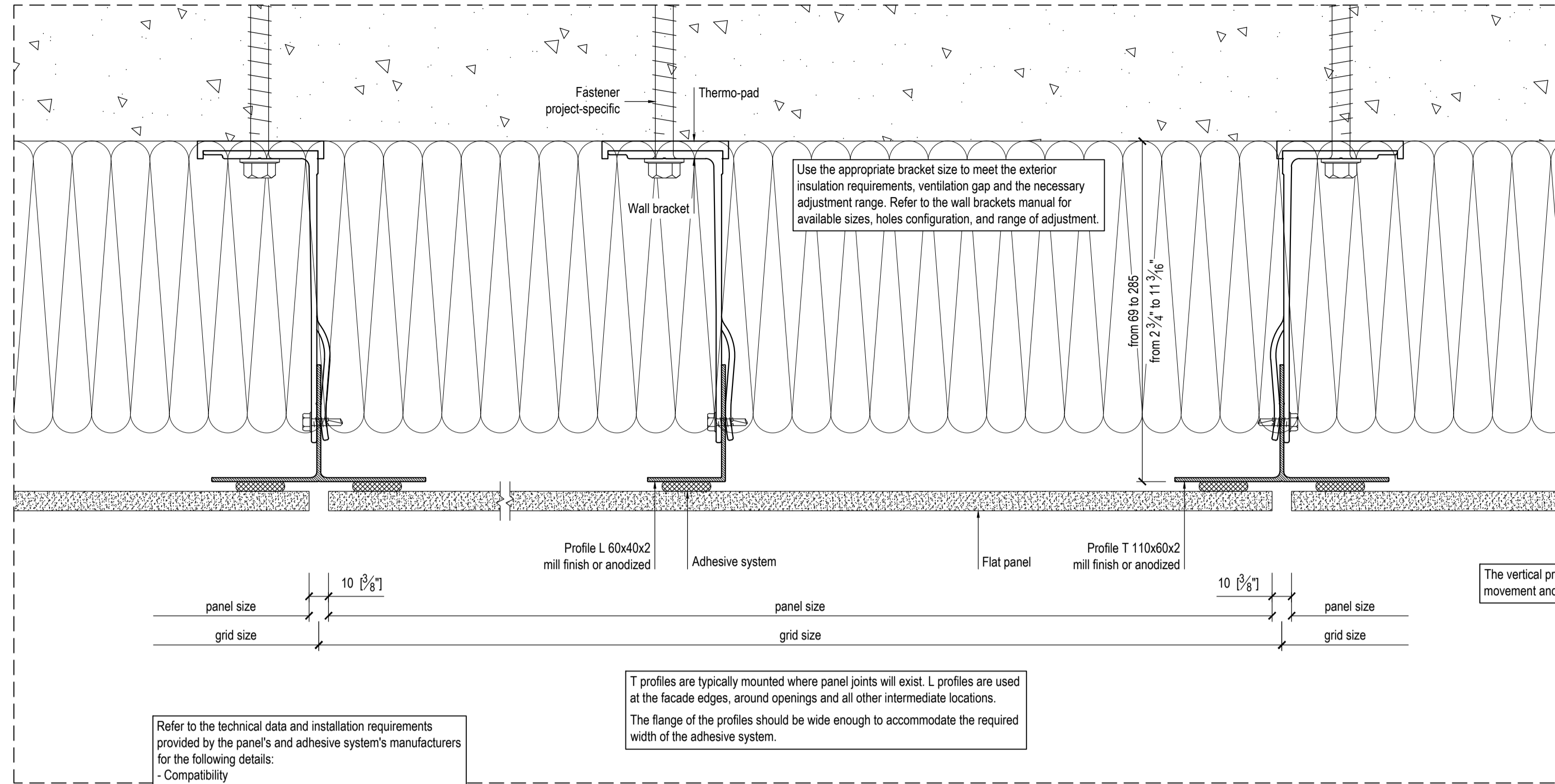


### PLAN DETAIL



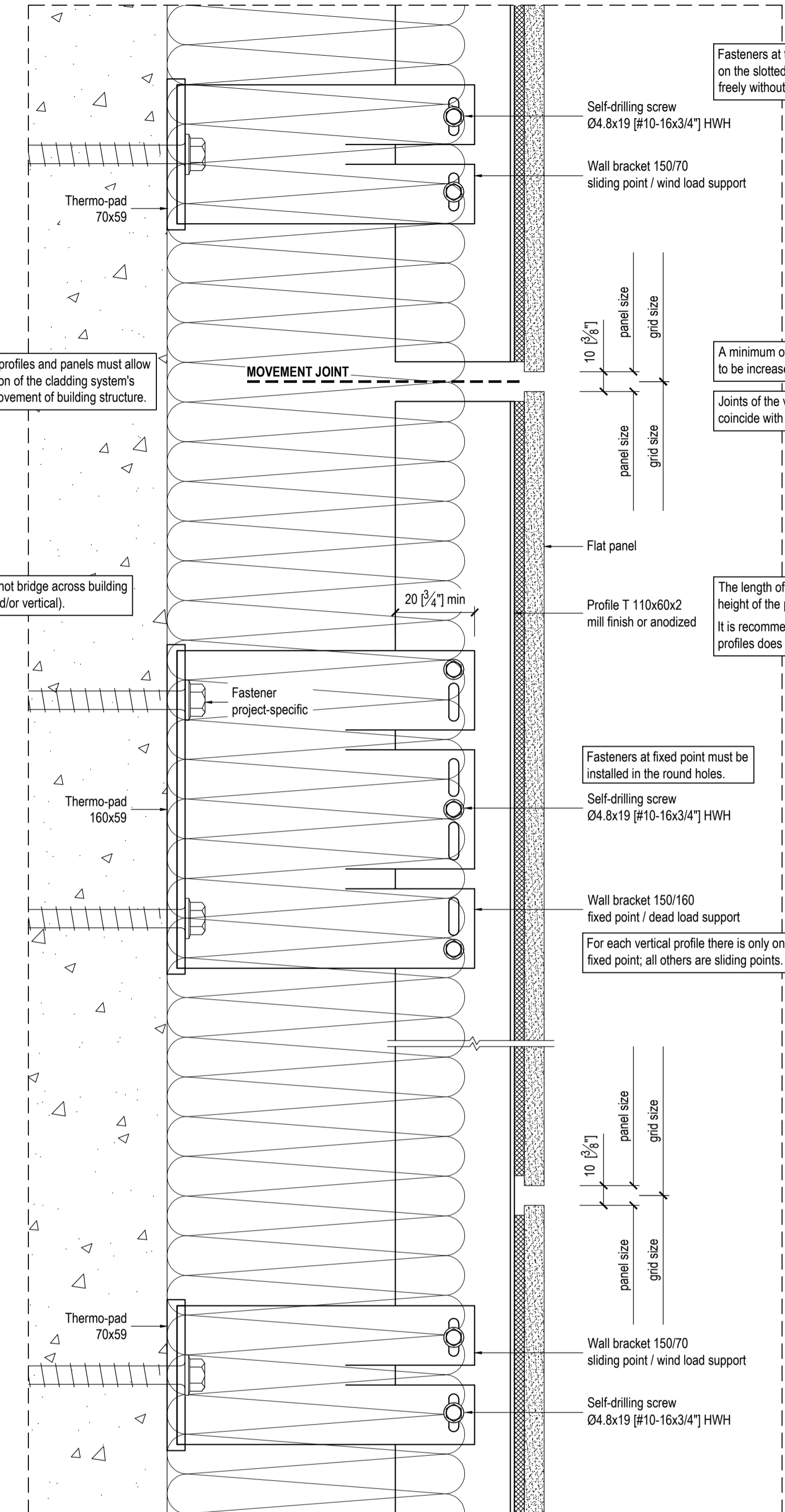
Refer to the technical data and installation requirements provided by the panel's and adhesive system's manufacturers for the following details:

- Compatibility
- Spacing and installation scheme
- Minimum joint size of the panels
- Recommended finish of the profiles

T profiles are typically mounted where panel joints will exist. L profiles are used at the facade edges, around openings and all other intermediate locations. The flange of the profiles should be wide enough to accommodate the required width of the adhesive system.

**GENERAL NOTES**  
The maximum length of the vertical profiles, as well as the number and spacing of attachment points should be specified by project-specific calculations.  
All fasteners should be 300 series stainless steel or as recommended by the fastener's manufacturer for fasteners exposed to weather.  
Minimum spacing and edge distances of fasteners must comply with codes of practice and manufacturer requirements, and should be considered in the design.

### SECTION DETAIL



Fasteners at the sliding point must be installed centered on the slotted holes to allow the profile to expand/contract freely without creating stress in the profile or fasteners.

Movement joints in profiles and panels must allow for thermal expansion of the cladding system's components and movement of building structure.

The vertical profiles and the panels should not bridge across building movement and seismic joints (horizontal and/or vertical).

A minimum of 10 mm [3/8"] joint is recommended, but it may need to be increased depending on the project-specific conditions.

Joints of the vertical profiles should coincide with the joints of the panels.

The length of the vertical profiles should reflect the height of the panels that will be attached to them. It is recommended that the length of the vertical profiles does not exceed the floor height.

Fasteners at fixed point must be installed in the round holes.

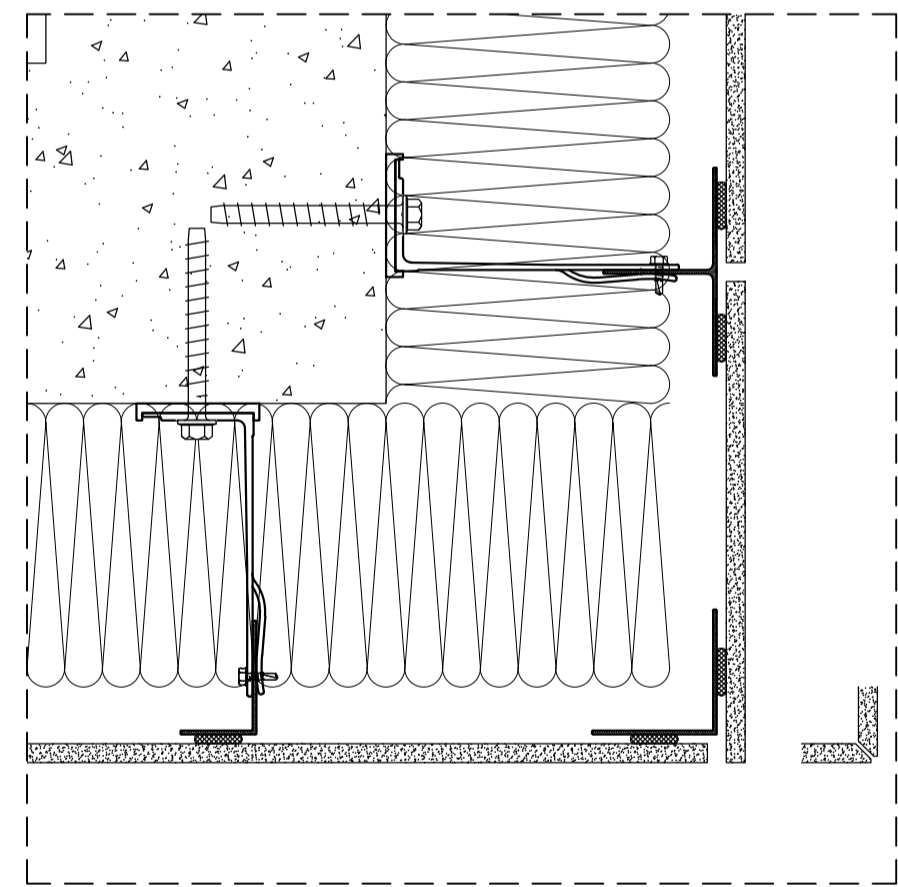
Self-drilling screw Ø4.8x19 (#10-16x3/4") HWH

Wall bracket 150/160 fixed point / dead load support

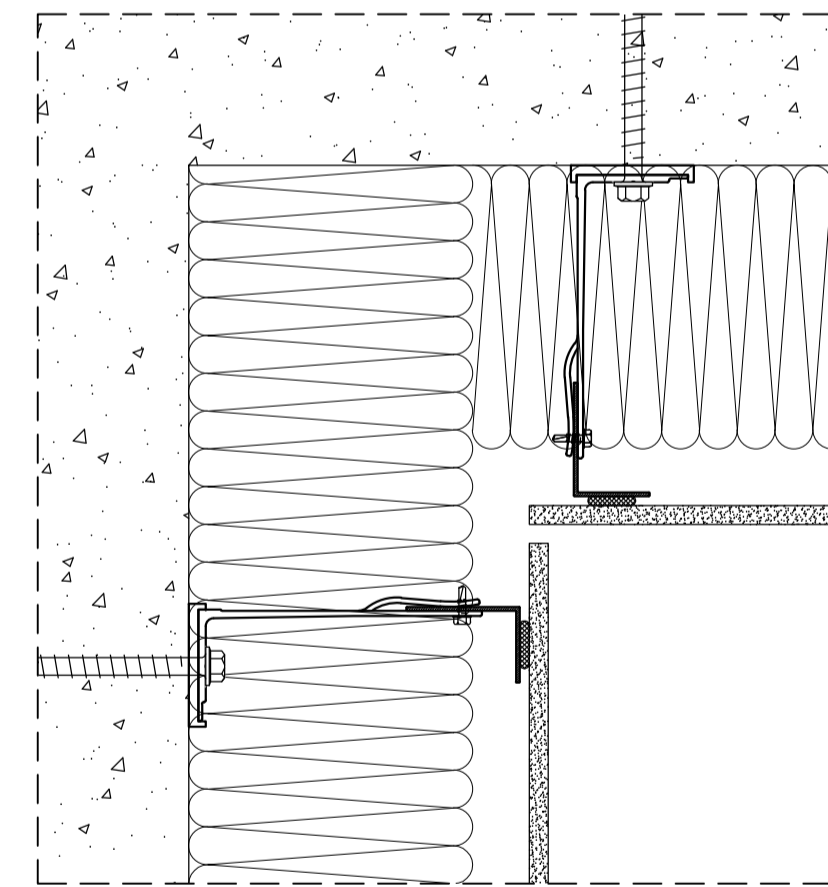
For each vertical profile there is only one fixed point; all others are sliding points.

**IF IN DOUBT - ASK**

### PLAN DETAIL - OUTER CORNER

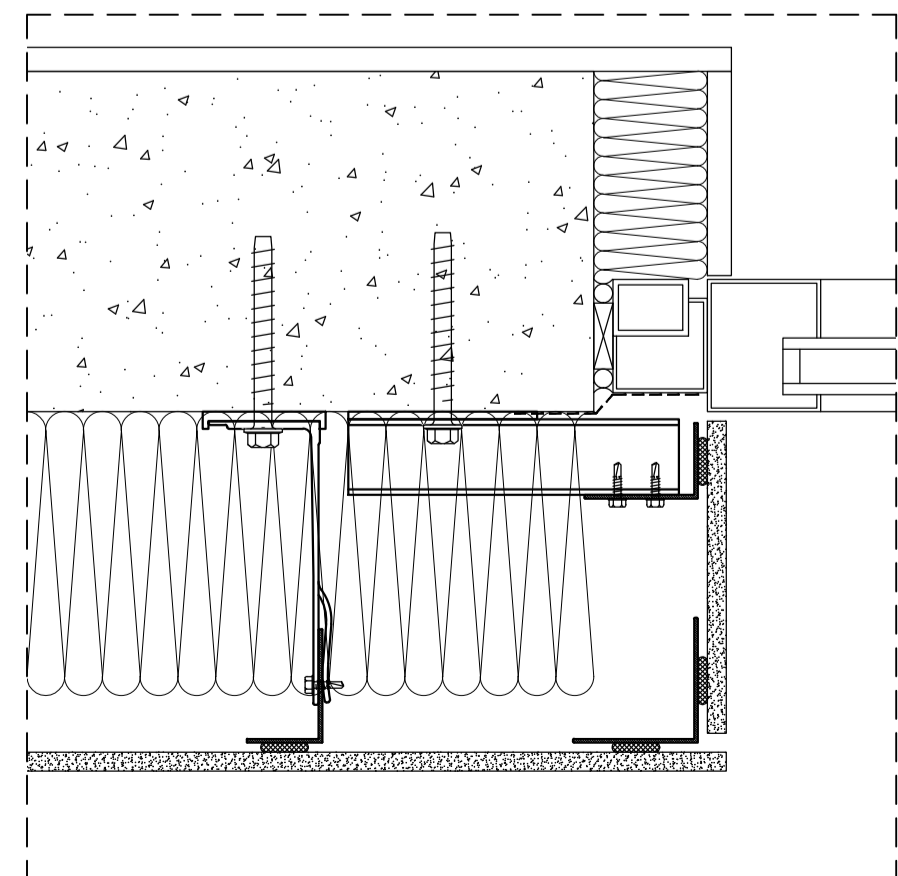


### PLAN DETAIL - INNER CORNER

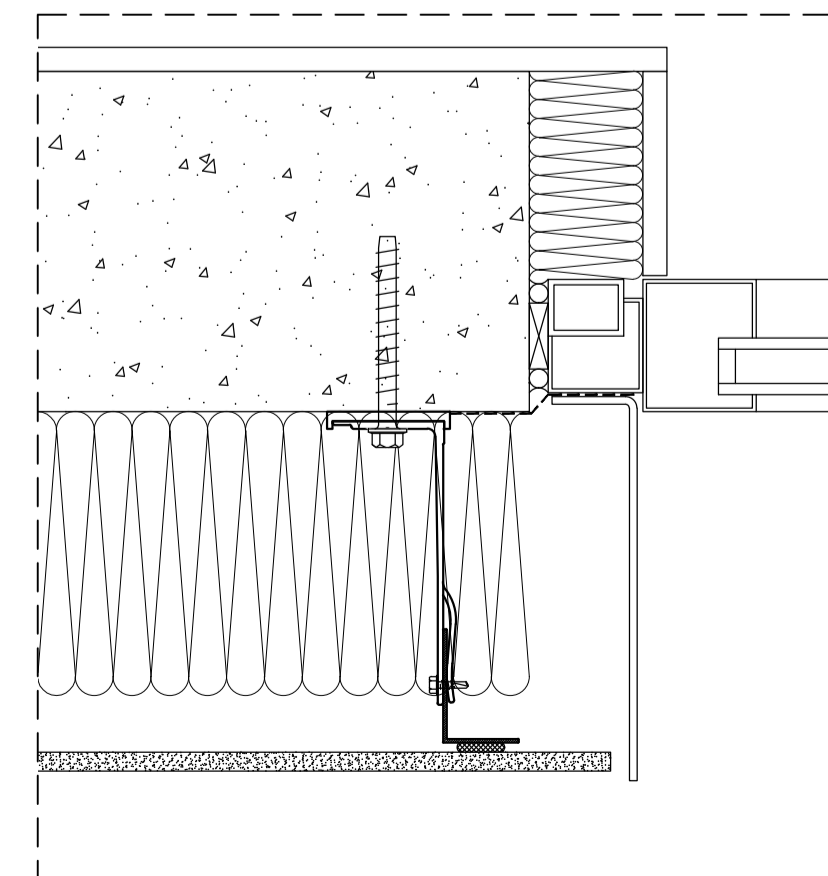


Provide the necessary movement gaps at wall openings - such as windows and doors, building corners and setbacks, etc.

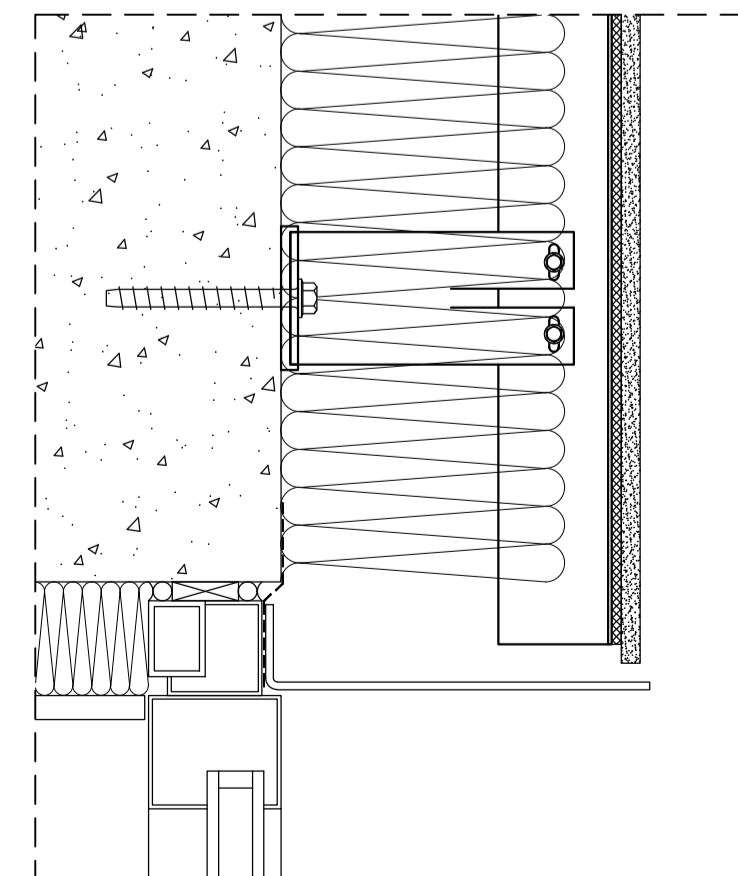
### PLAN DETAIL - WINDOW JAMB



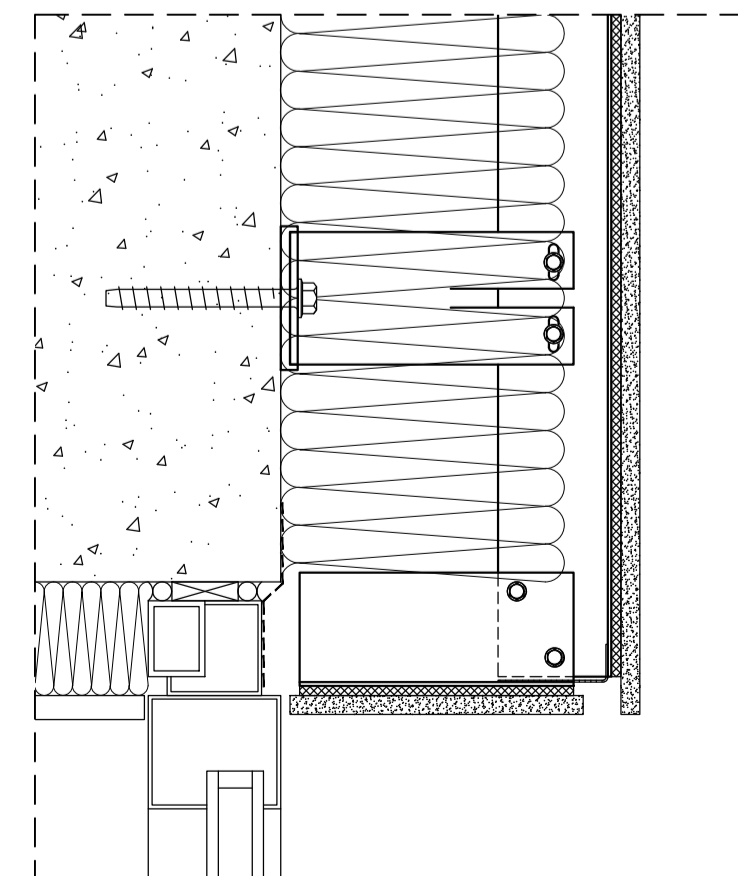
### PLAN DETAIL - WINDOW JAMB



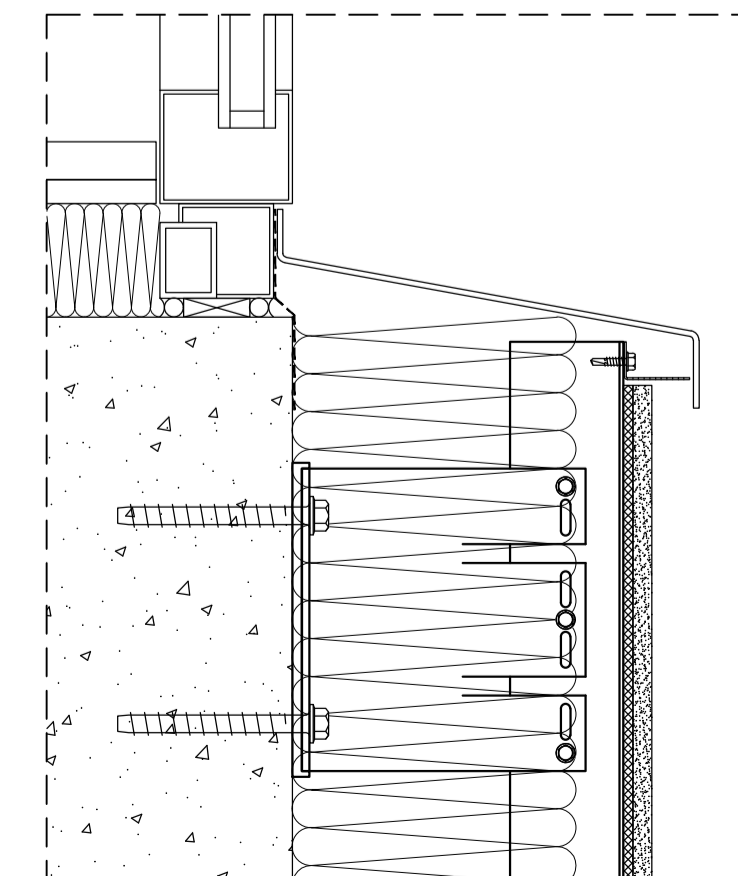
### SECTION DETAIL - WINDOW HEAD



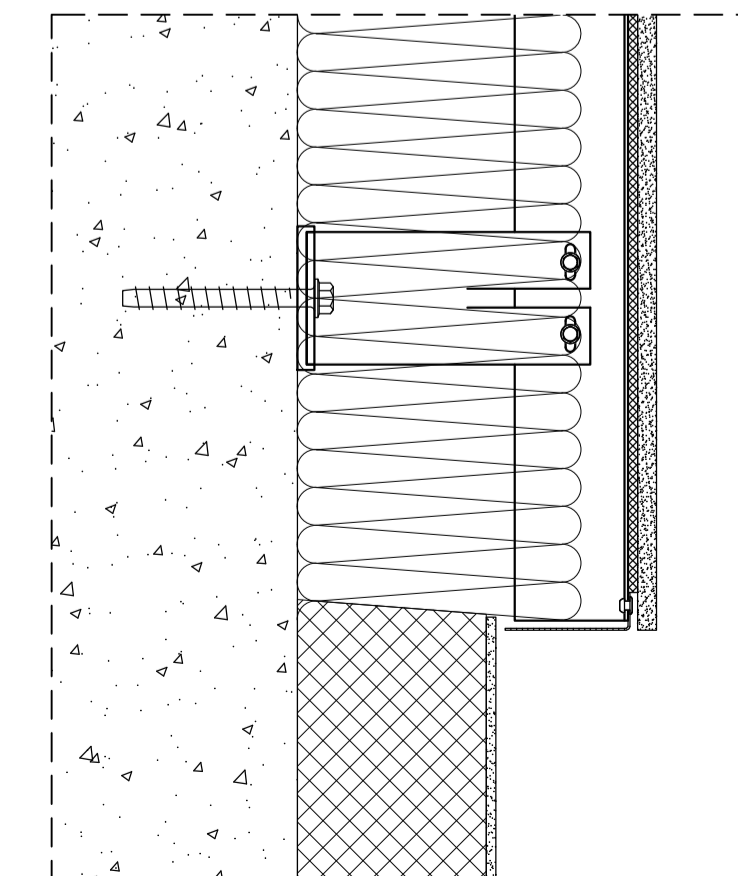
### SECTION DETAIL - WINDOW HEAD



### SECTION DETAIL - WINDOW SILL



### SECTION DETAIL - BASE



### SECTION DETAIL - COPING

