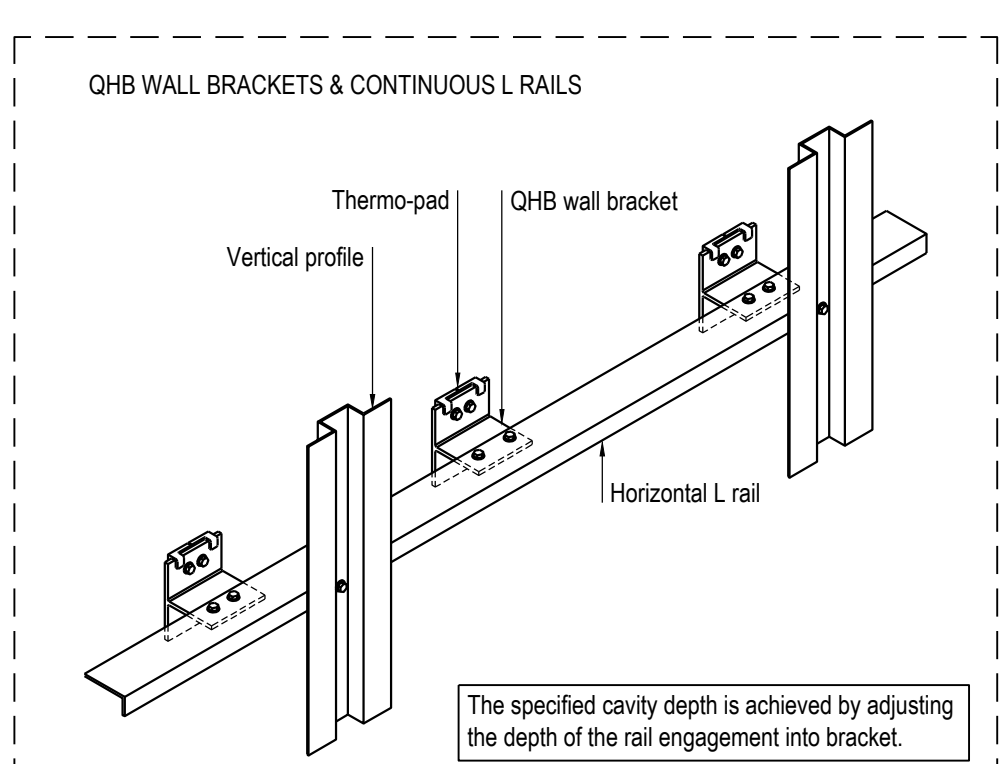
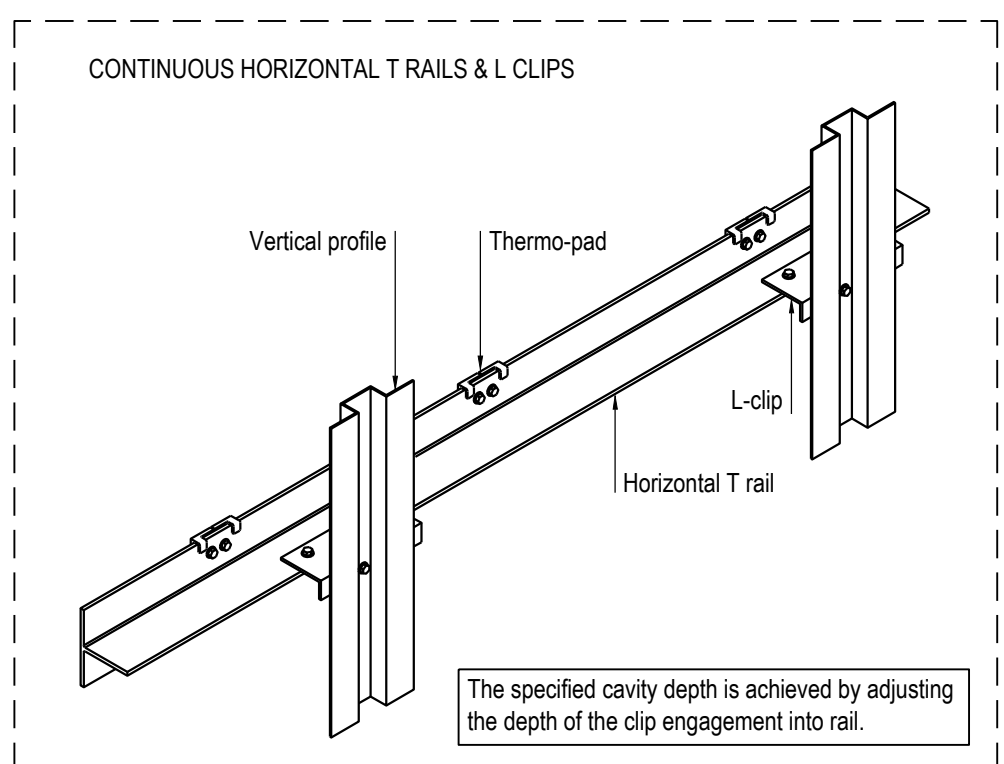
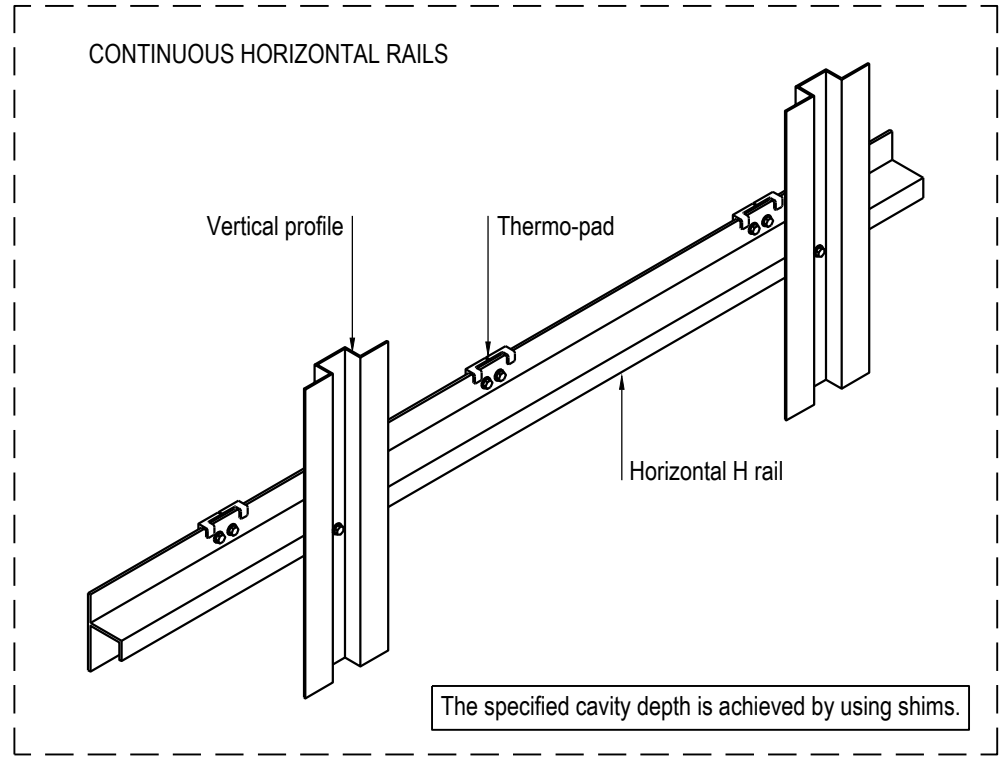
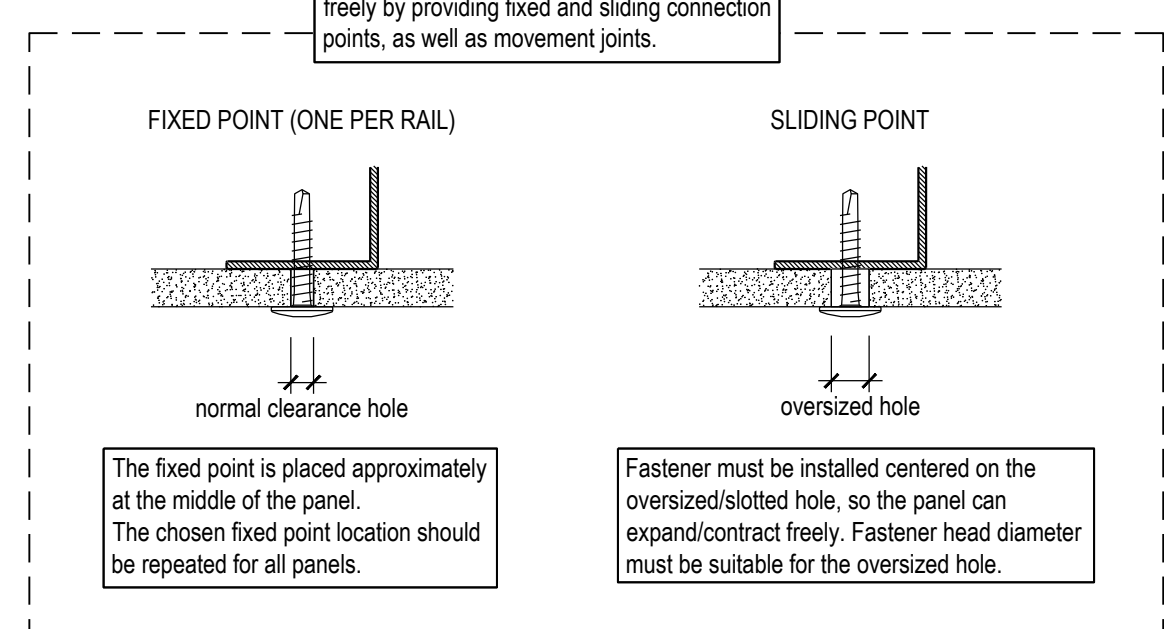
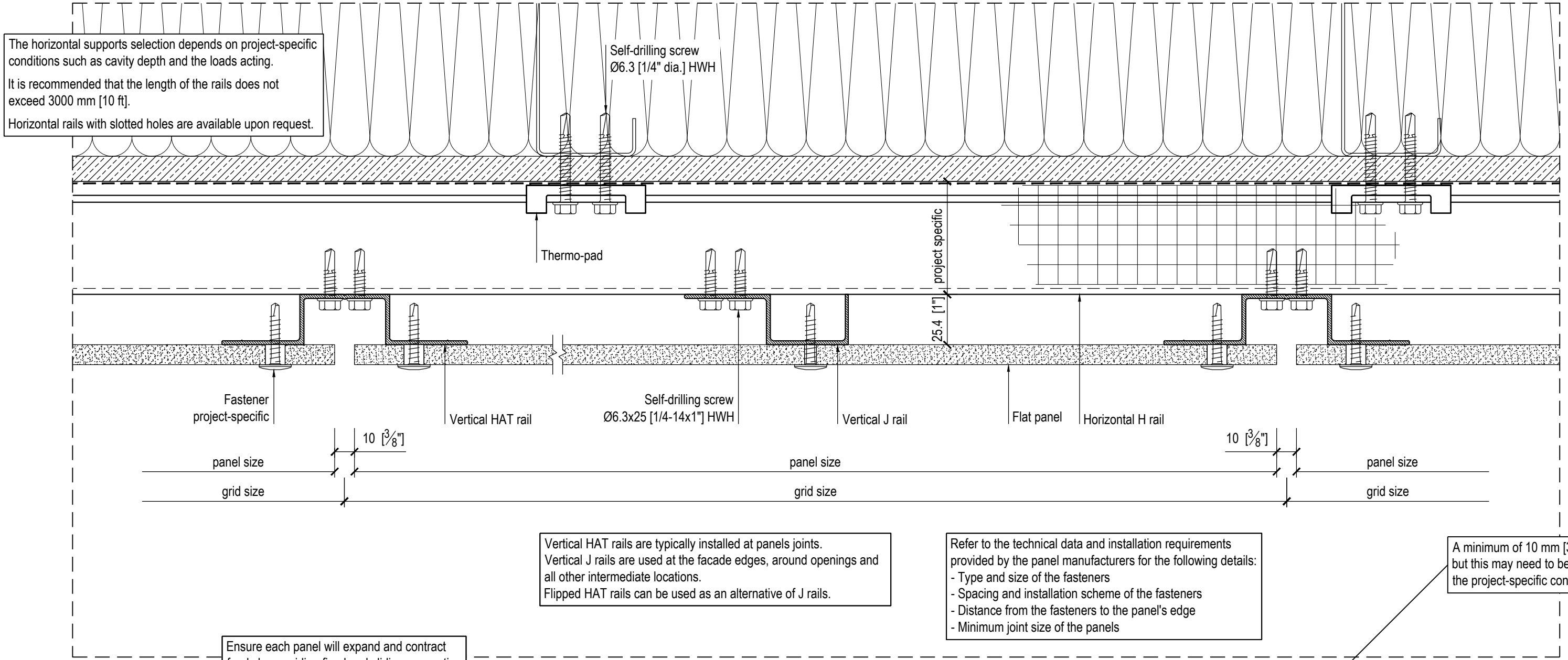


IF IN DOUBT - ASK

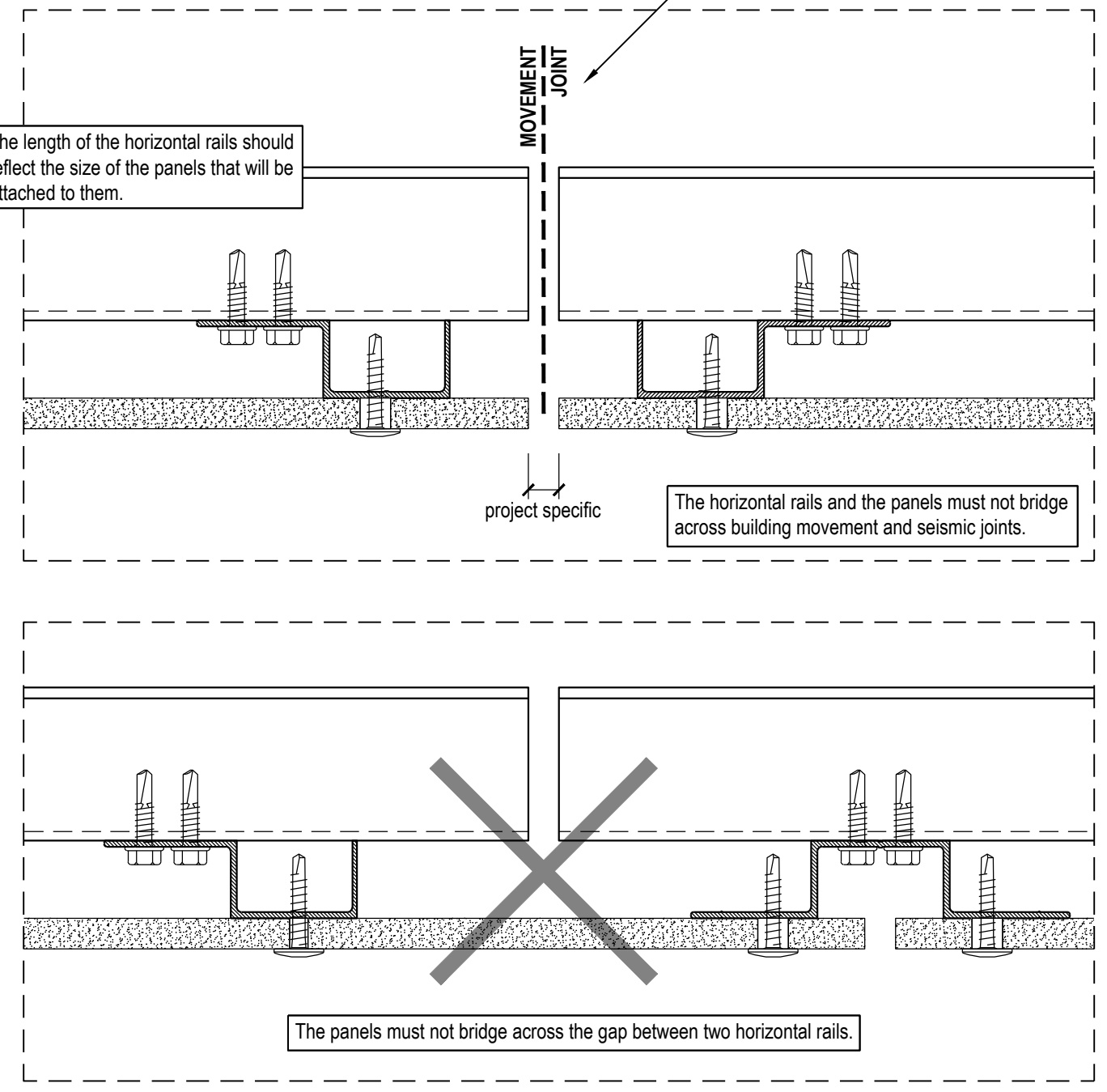
HORIZONTAL SUPPORT CONFIGURATIONS



PLAN DETAIL



PLAN DETAIL - MOVEMENT JOINT



GENERAL NOTES

Movement joints in rails and panels must allow for thermal expansion of the cladding system's components and the movement of building structure.

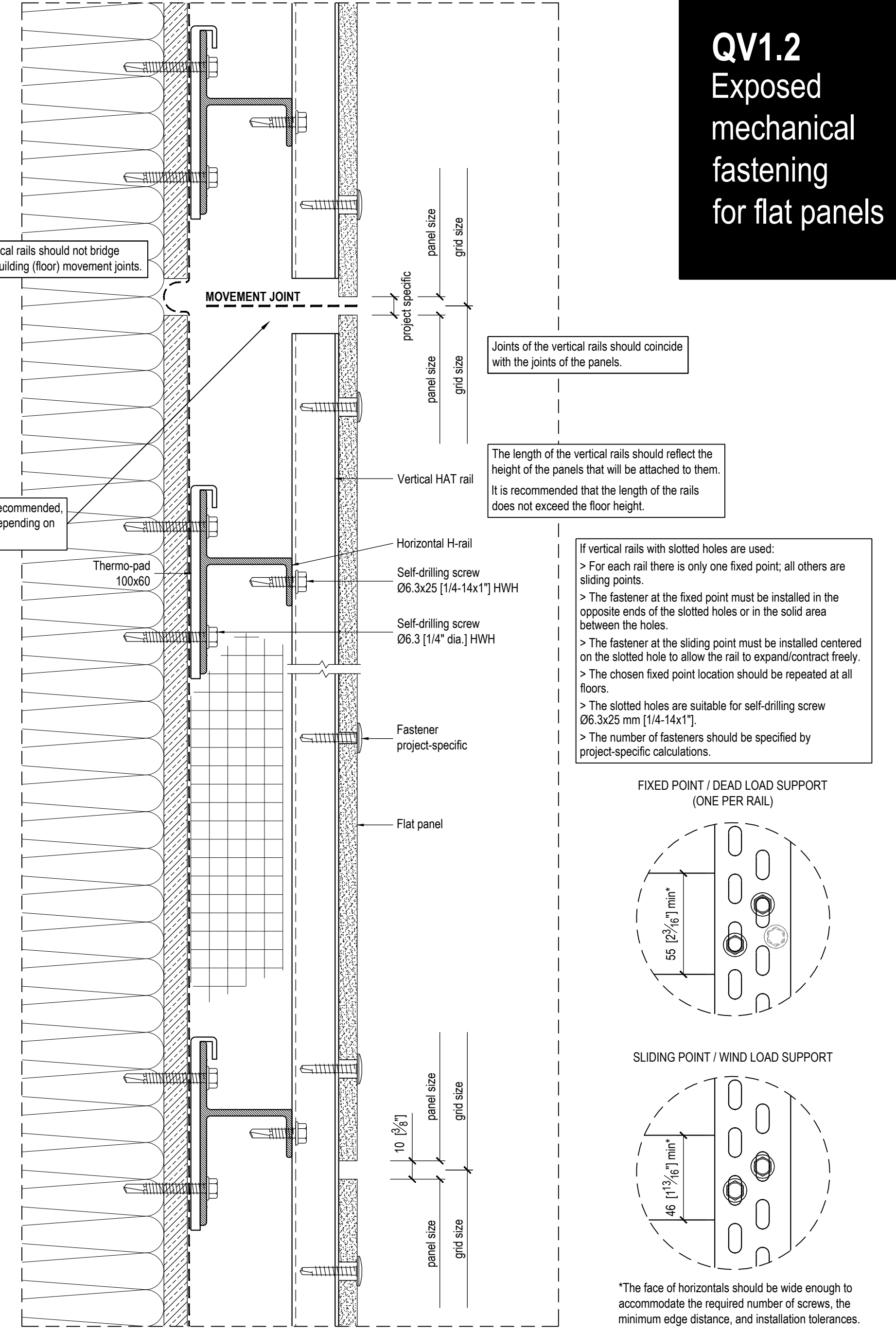
The maximum length of the rails, as well as the number and spacing of attachment points should be specified by project-specific calculations.

All fasteners should be 300 series stainless steel or as recommended by the fastener manufacturer for fasteners exposed to weather.

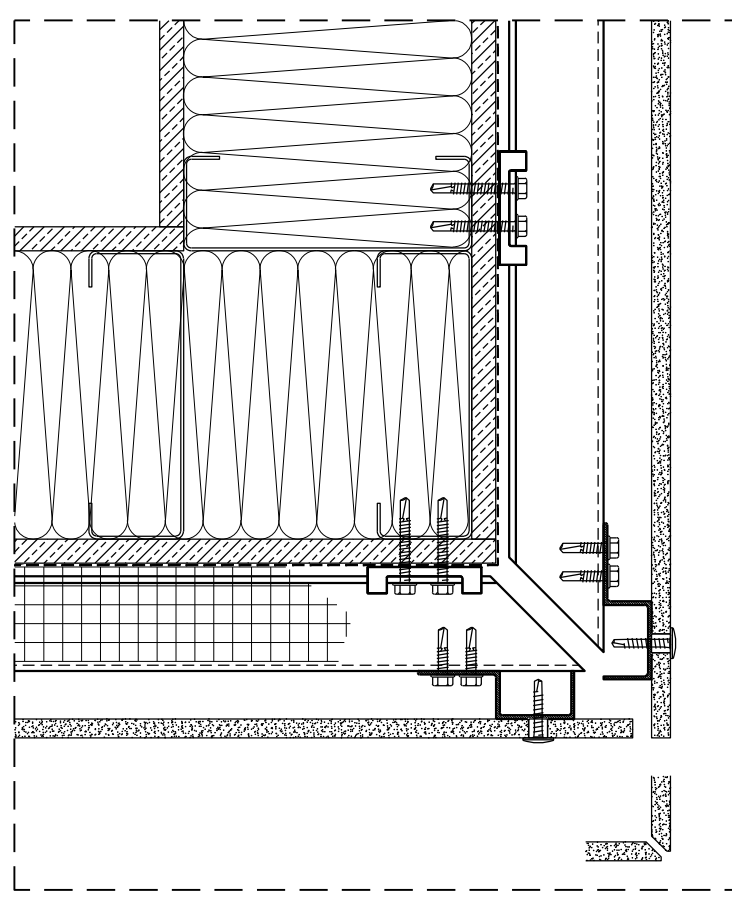
Minimum spacing and edge distances of fasteners must comply with codes of practice and manufacturer's requirements, and should be considered in the design.

Provide the necessary movement gaps at wall openings - such as windows and doors, building corners and setbacks, etc.

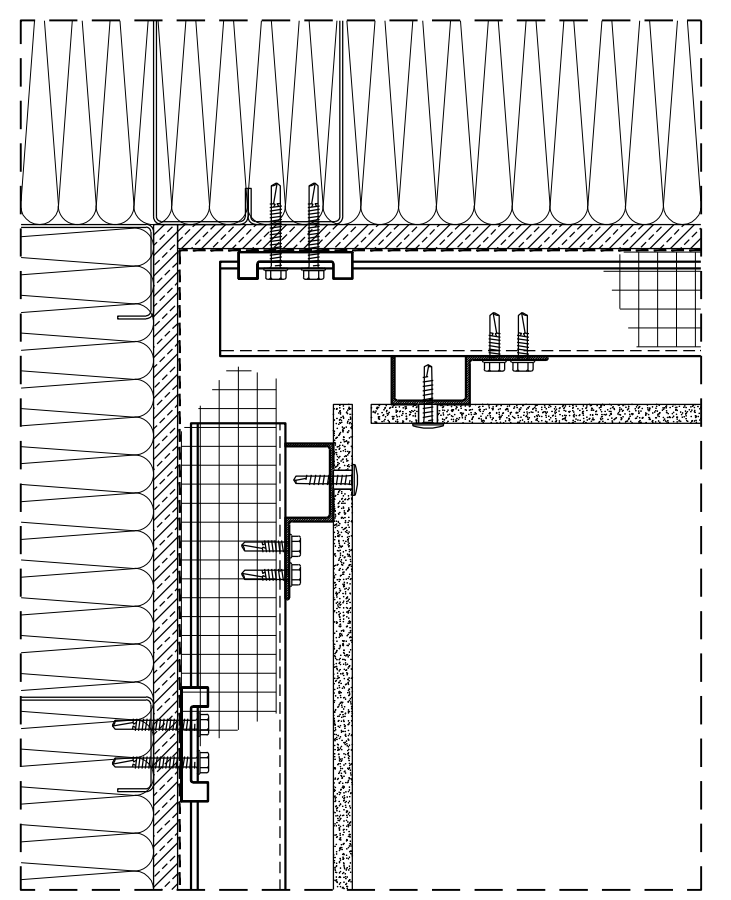
SECTION DETAIL



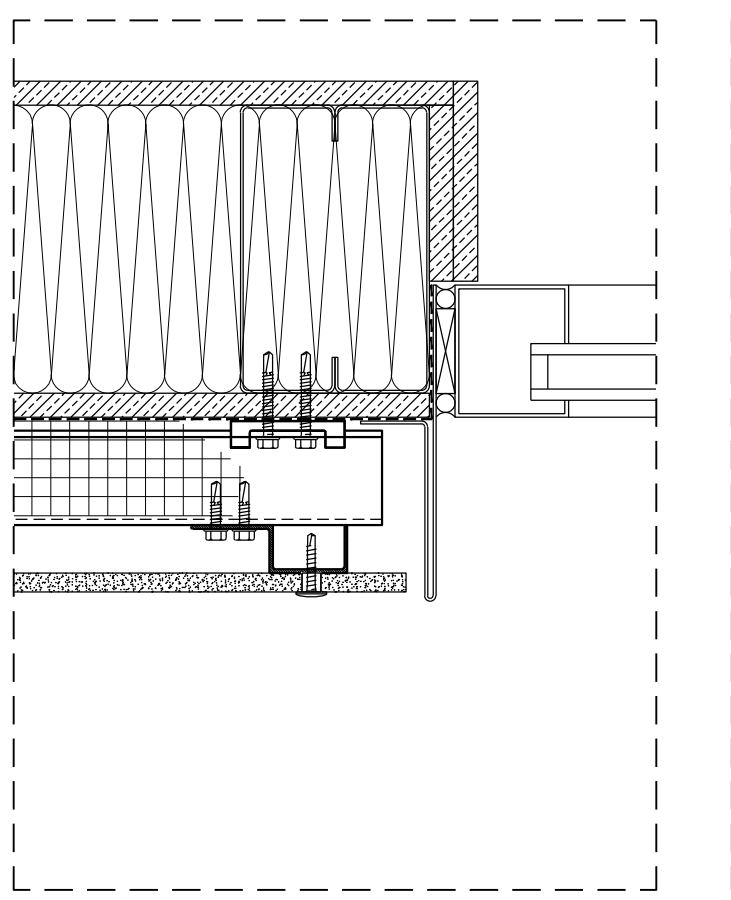
PLAN DETAIL - OUTER CORNER



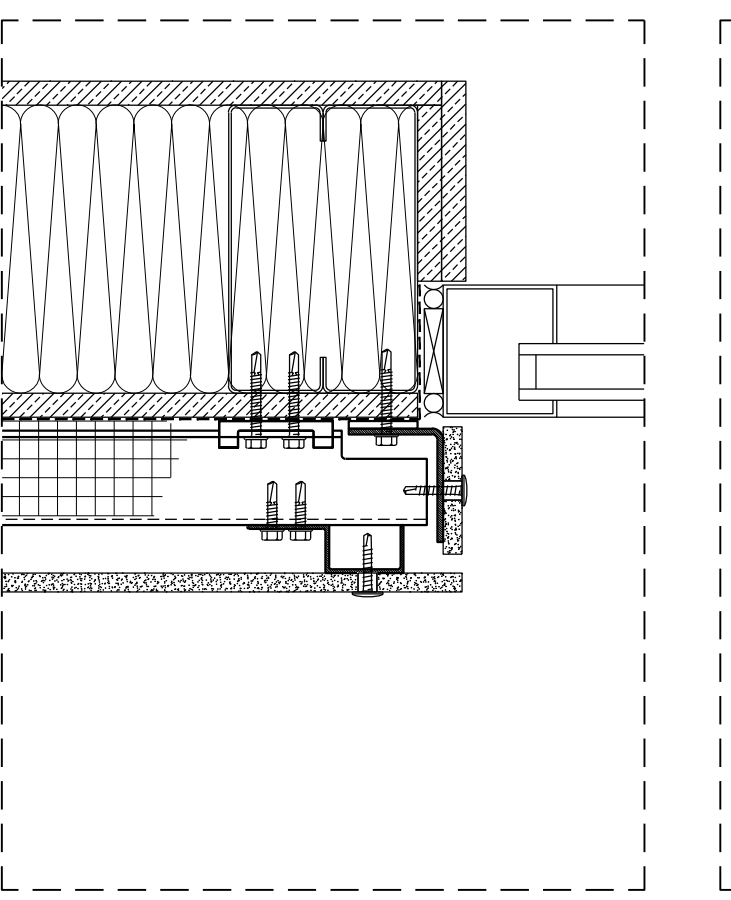
PLAN DETAIL - INNER CORNER



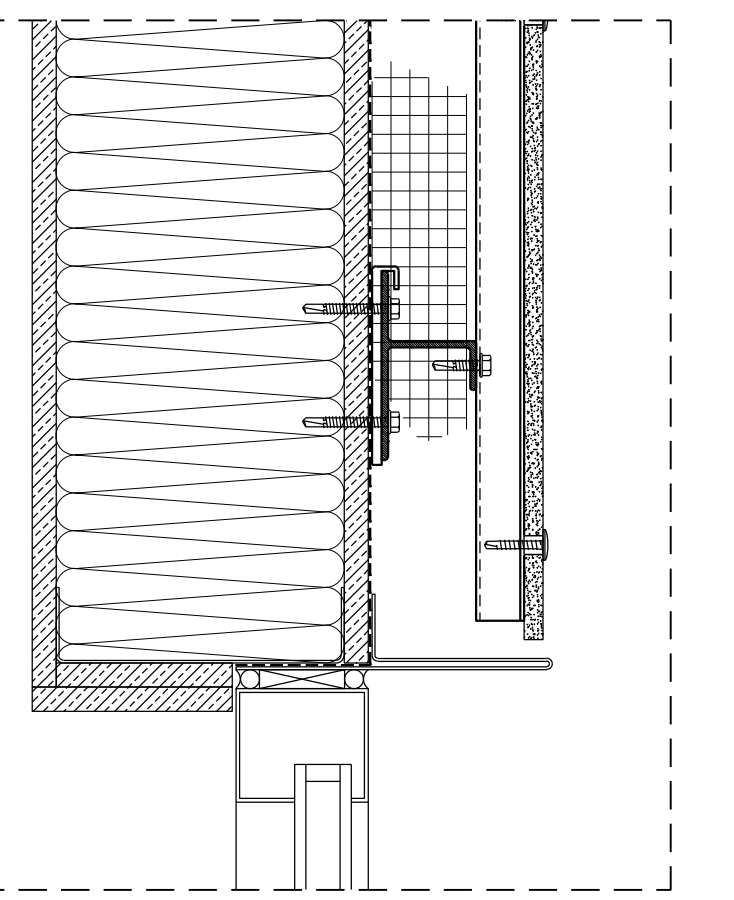
PLAN DETAIL - WINDOW JAMB



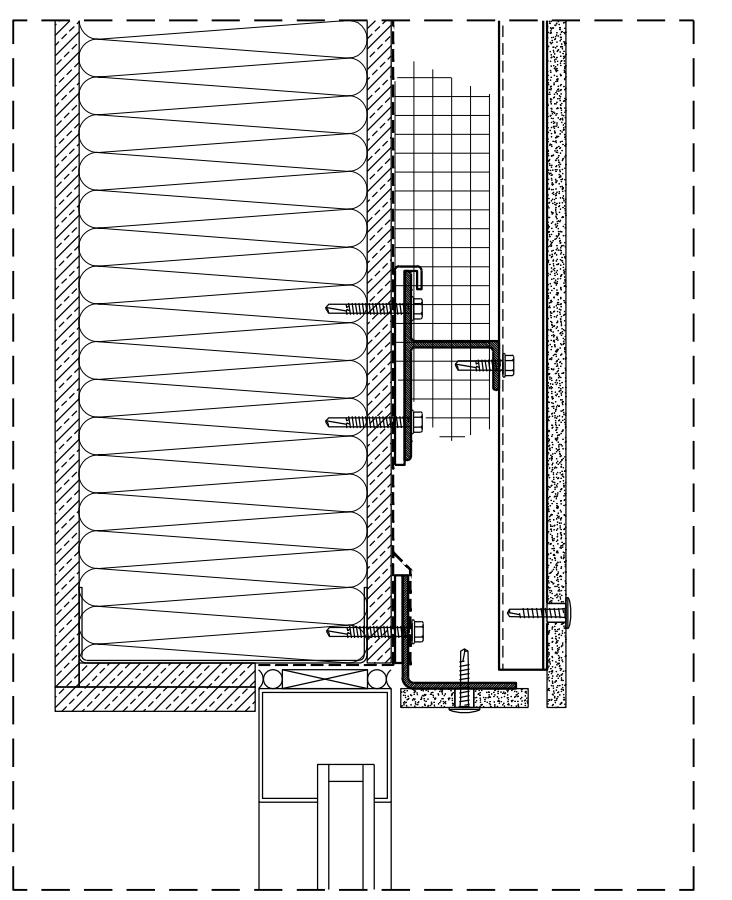
PLAN DETAIL - WINDOW JAMB



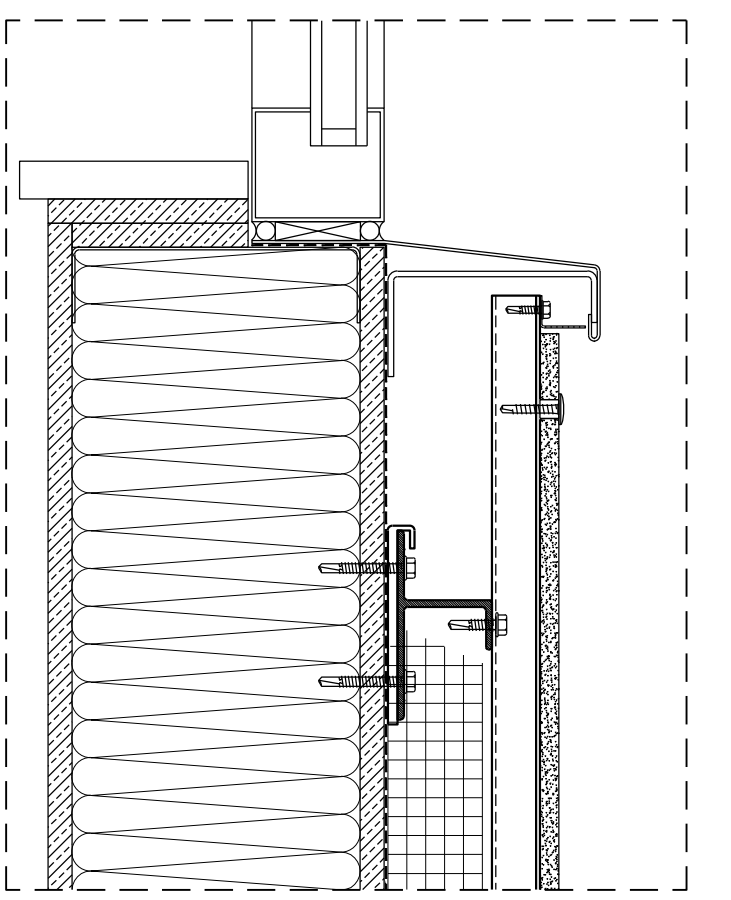
SECTION DETAIL - WINDOW HEAD



SECTION DETAIL - WINDOW HEAD



SECTION DETAIL - WINDOW SILL



SECTION DETAIL - COPING

