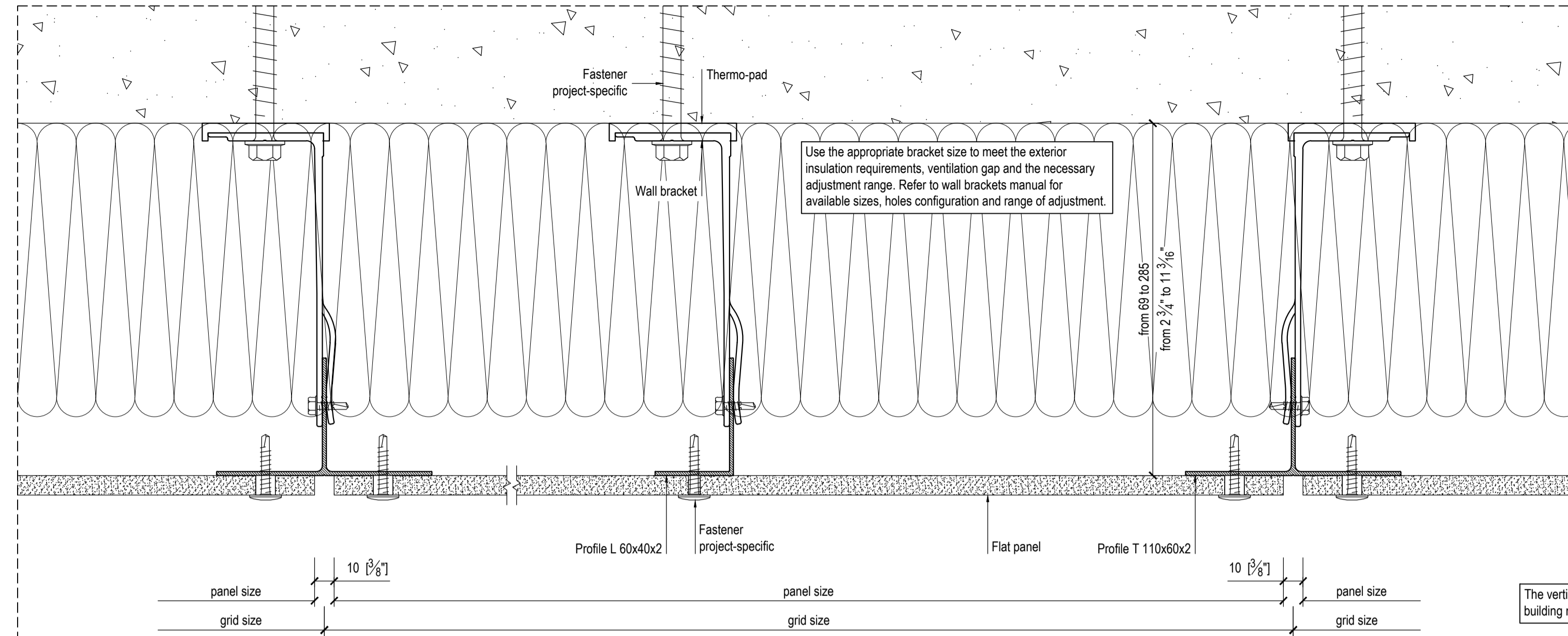


**PLAN DETAIL**



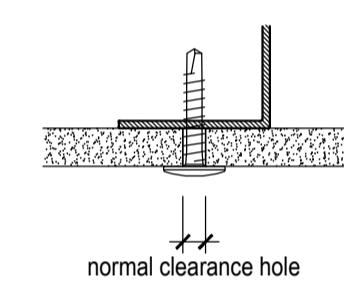
T-profiles are typically mounted where panel joints will exist. L-profiles are used at the facade edges, around openings, and all other intermediate locations. The flange of the profile should be wide enough to accommodate the number of screws, their spacing and edge distance, and installation tolerances.

Refer to the technical data and installation requirements provided by the panel manufacturer for the following details:

- Type and size of the fasteners
- Spacing and installation scheme of the fasteners
- Distance from the fasteners to the panel's edge
- Minimum joint size of the panels

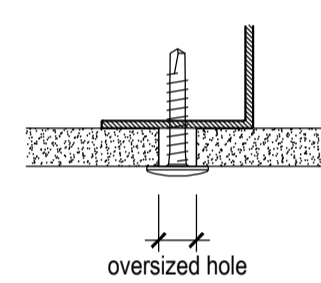
Ensure each panel will expand and contract freely by providing fixed and sliding connection points, as well as movement joints.

**FIXED POINT (ONE PER RAIL)**



The fixed point is placed approximately at the middle of the panel. The chosen fixed point location should be repeated for all panels.

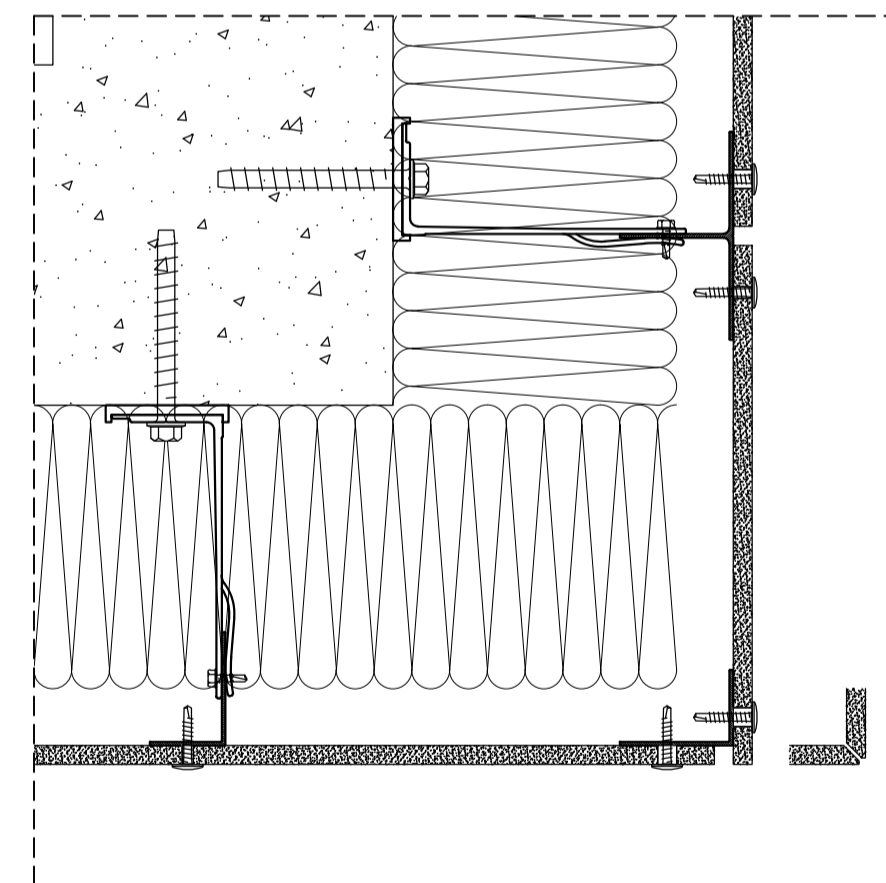
**SLIDING POINT**



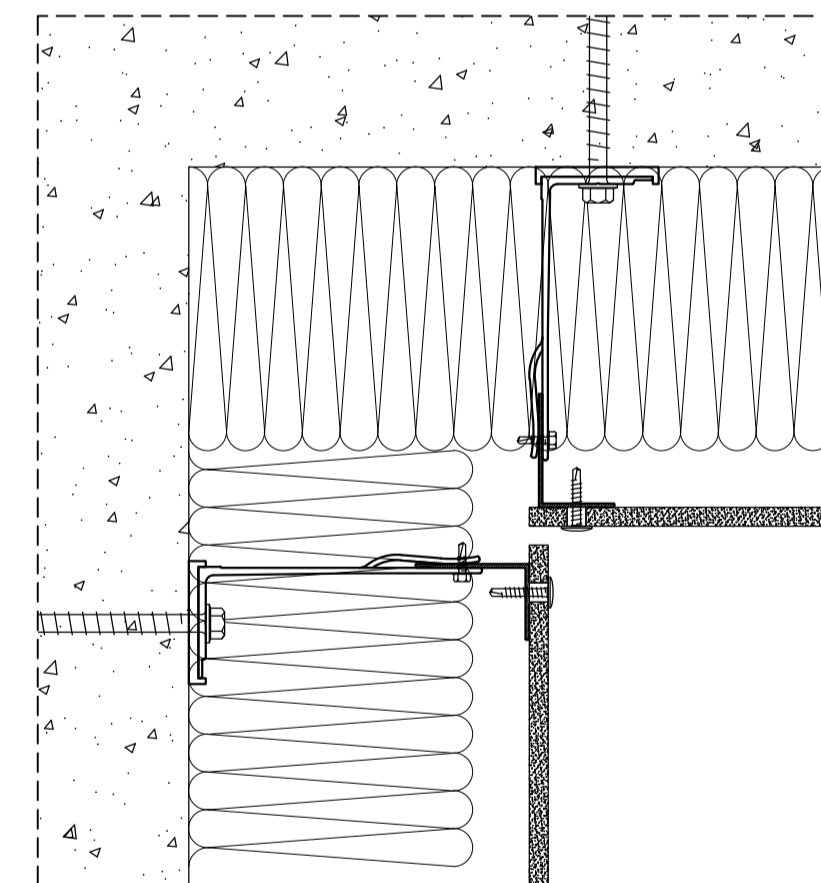
Fastener must be installed centered on the oversized/slotted hole, so the panel can expand/contract freely. Fastener head diameter must be suitable for the oversized hole.

Provide the necessary movement gaps at wall openings - such as windows and doors, building corners and setbacks, etc.

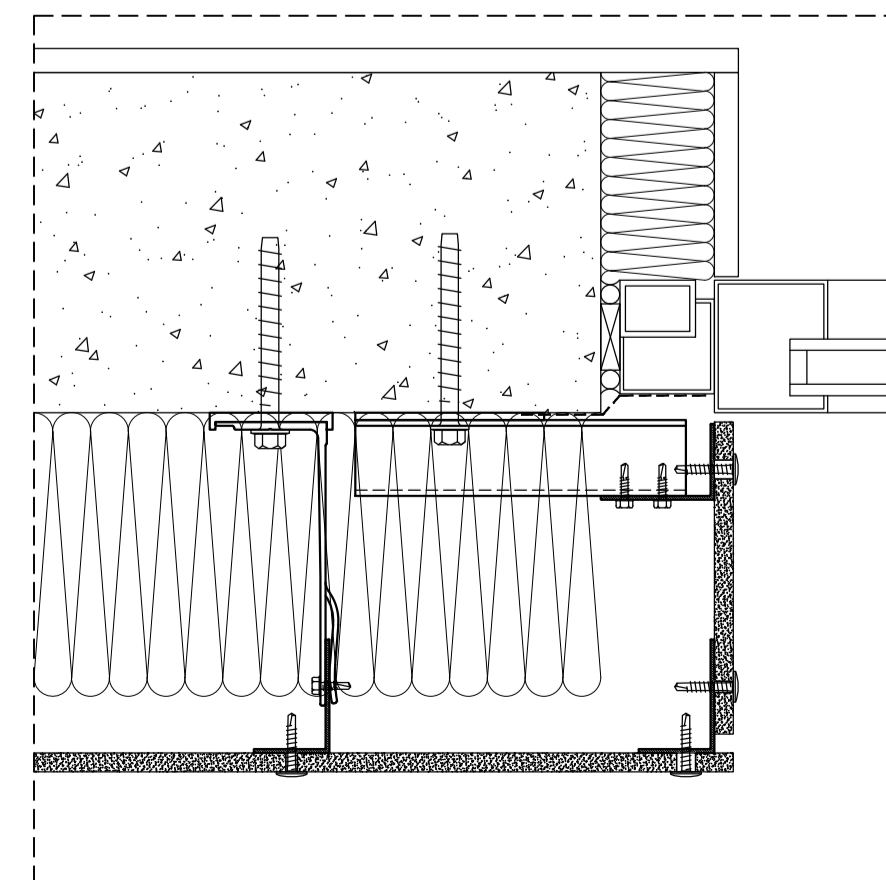
**PLAN DETAIL - OUTER CORNER**



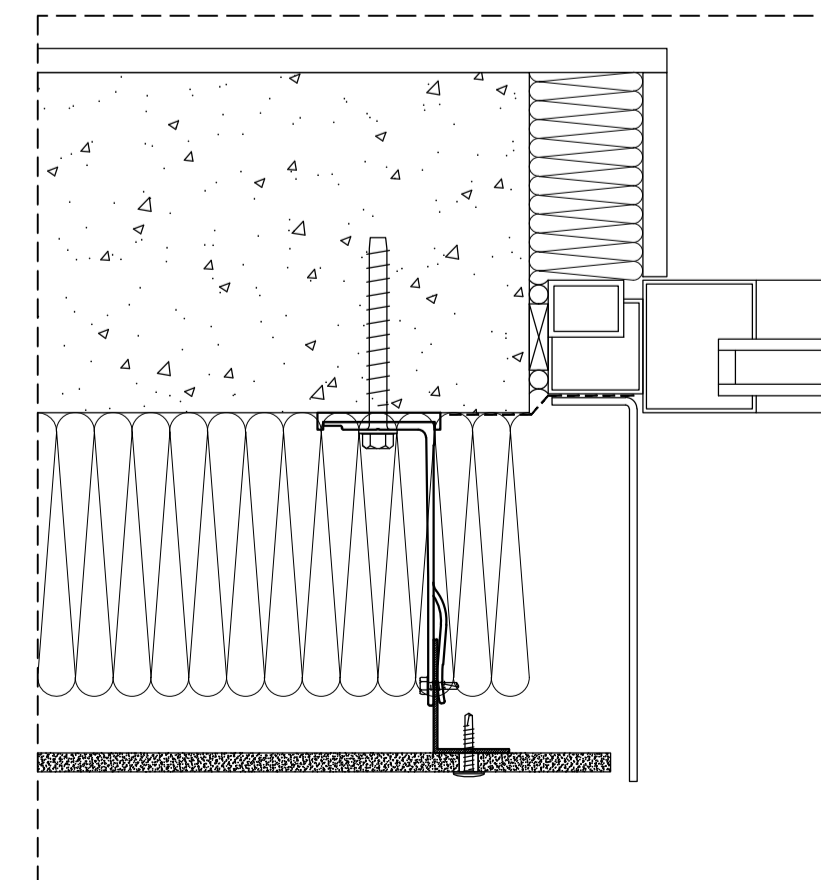
**PLAN DETAIL - INNER CORNER**



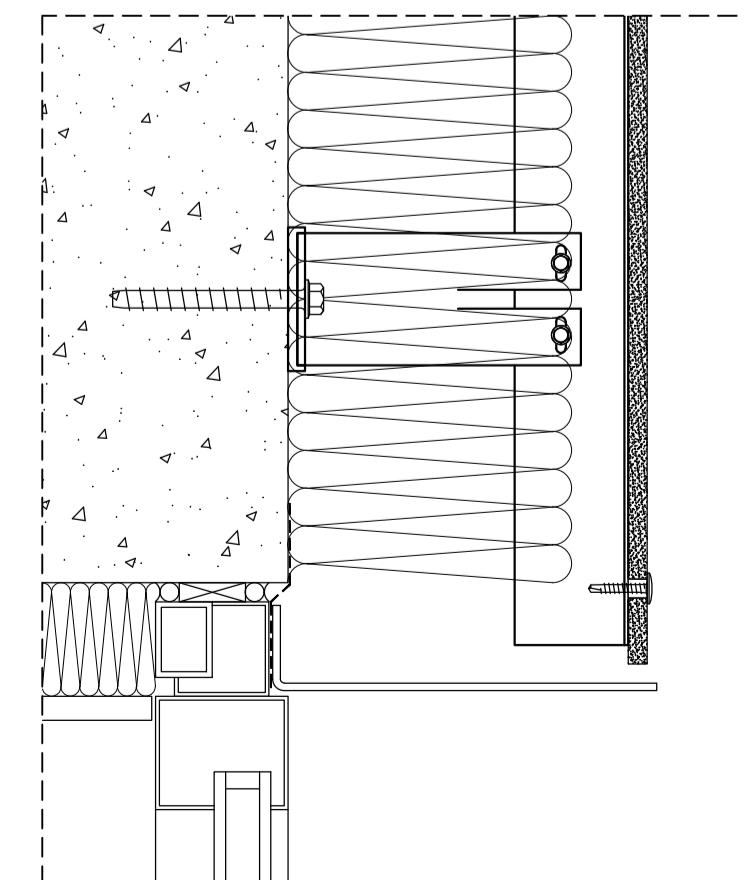
**PLAN DETAIL - WINDOW JAMB**



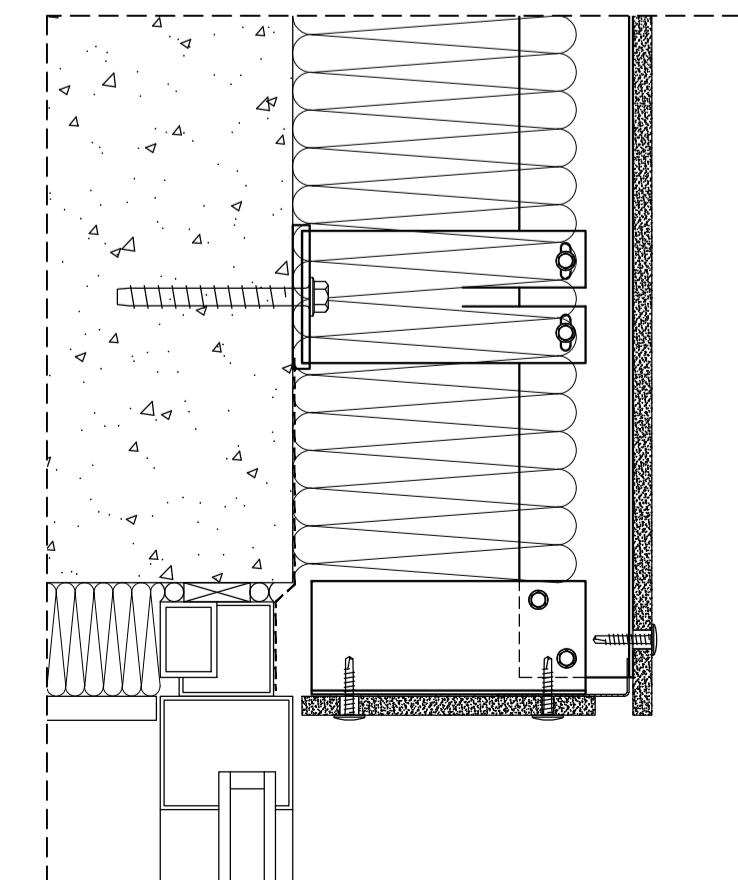
**PLAN DETAIL - WINDOW JAMB**



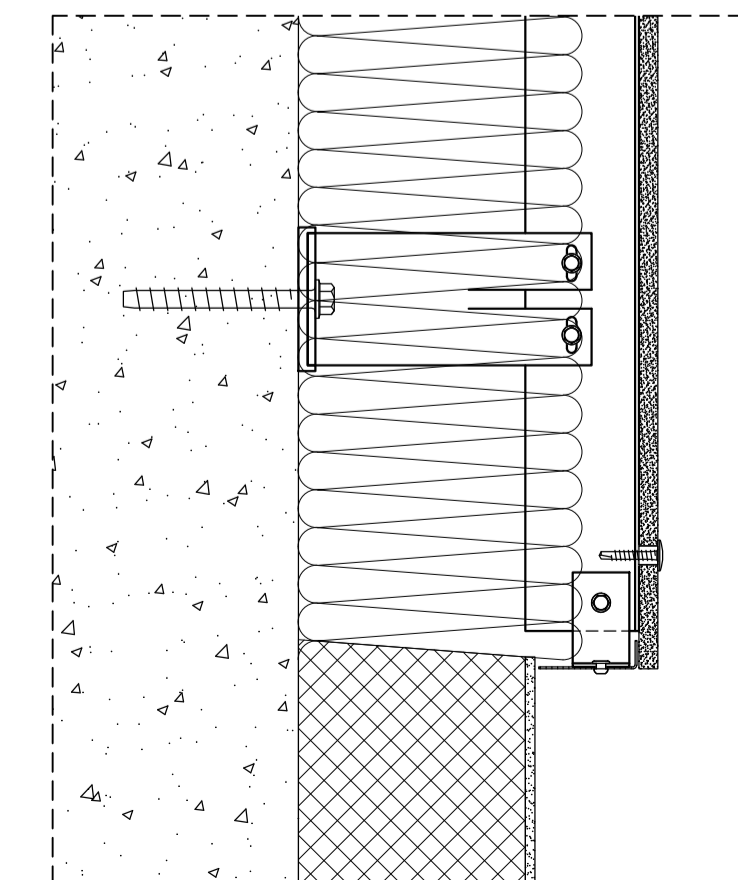
**SECTION DETAIL - WINDOW HEAD**



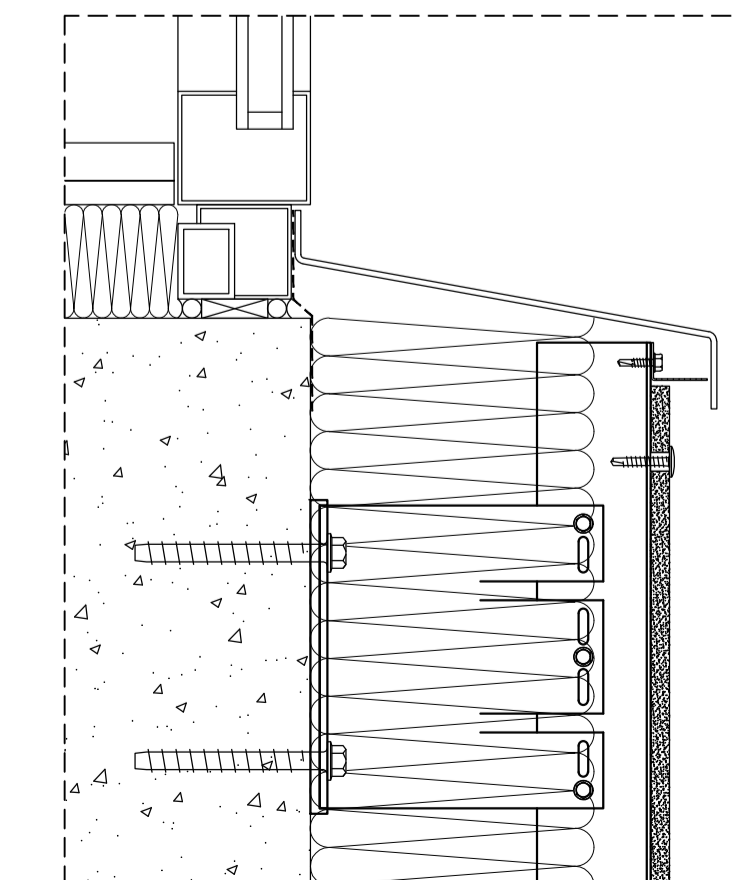
**SECTION DETAIL - WINDOW HEAD**



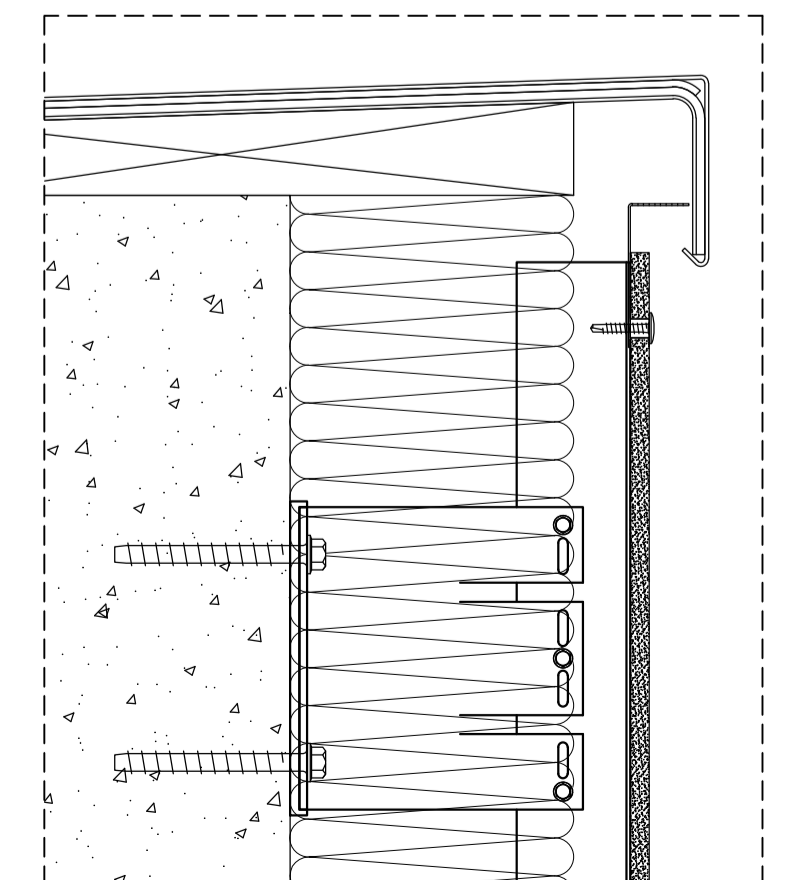
**SECTION DETAIL - BASE**



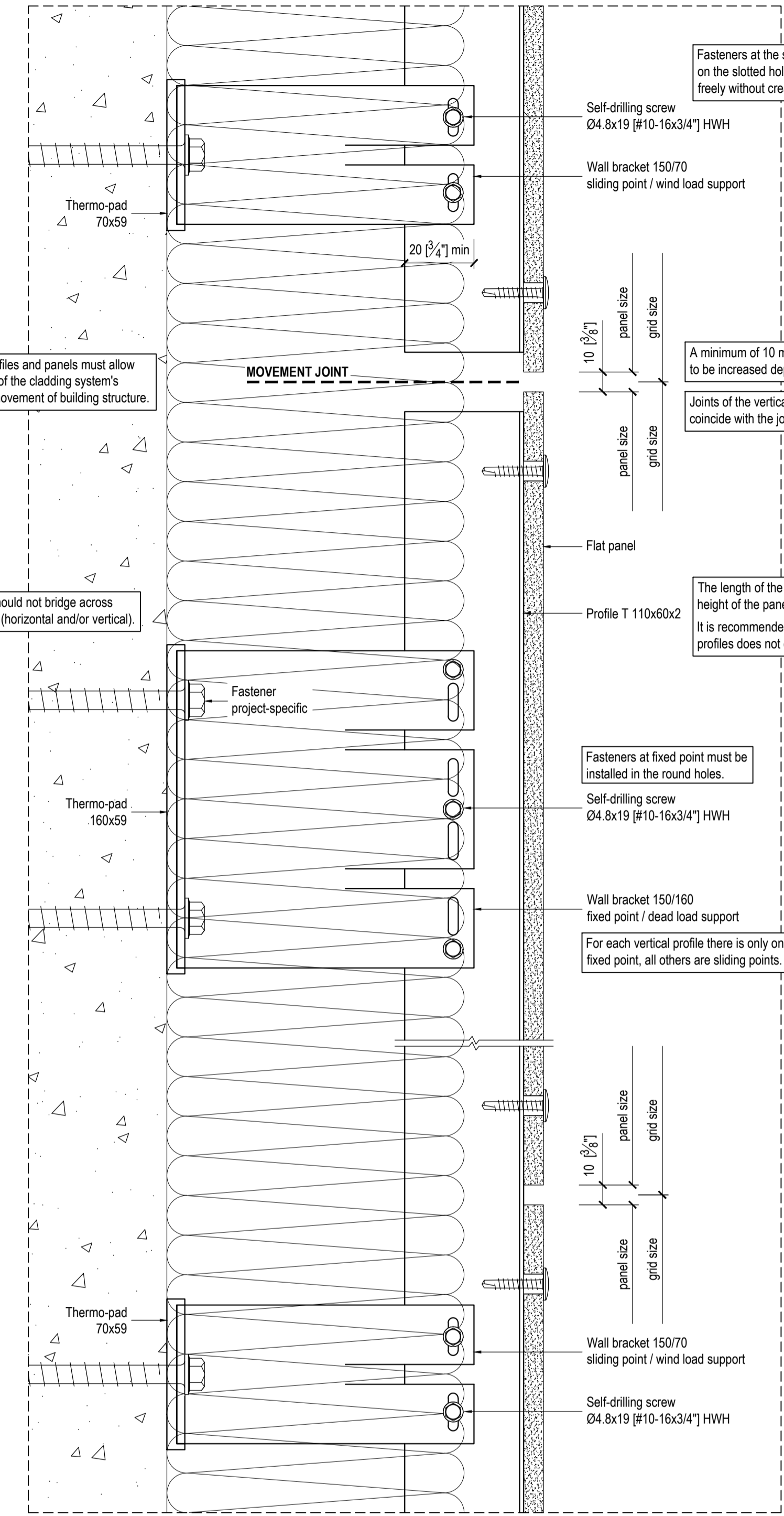
**SECTION DETAIL - WINDOW SILL**



**SECTION DETAIL - COPING**



**SECTION DETAIL**



Movement joints in profiles and panels must allow for thermal expansion of the cladding system's components and the movement of building structure.

The vertical profiles and the panels should not bridge across building movement and seismic joints (horizontal and/or vertical).

**IF IN DOUBT - ASK**

**GENERAL NOTES**

The maximum length of the vertical profiles, as well as the number and spacing of attachment points should be specified by project-specific calculations.

All fasteners should be 300 series stainless steel or as recommended by the fastener's manufacturer for fasteners exposed to weather.

Minimum spacing and edge distances of fasteners must comply with codes of practice and manufacturer requirements, and should be considered in the design.