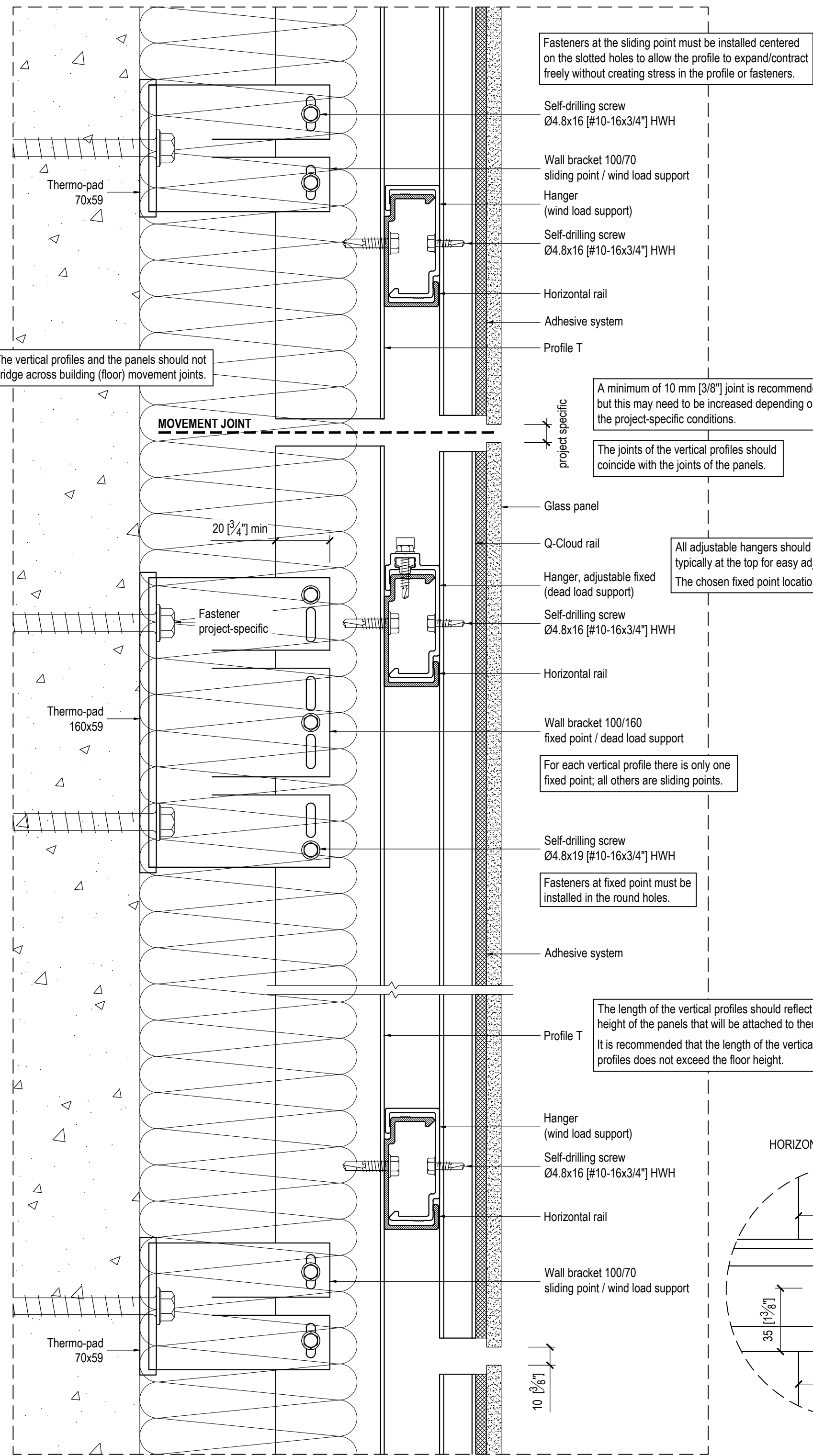


IF IN DOUBT - ASK

SECTION DETAIL



The vertical profiles and the panels should not bridge across building (floor) movement joints.

Fasteners at the sliding point must be installed centered on the slotted holes to allow the profile to expand/contract freely without creating stress in the profile or fasteners.

A minimum of 10 mm [3/8"] joint is recommended, but this may need to be increased depending on the project-specific conditions.

The joints of the vertical profiles should coincide with the joints of the panels.

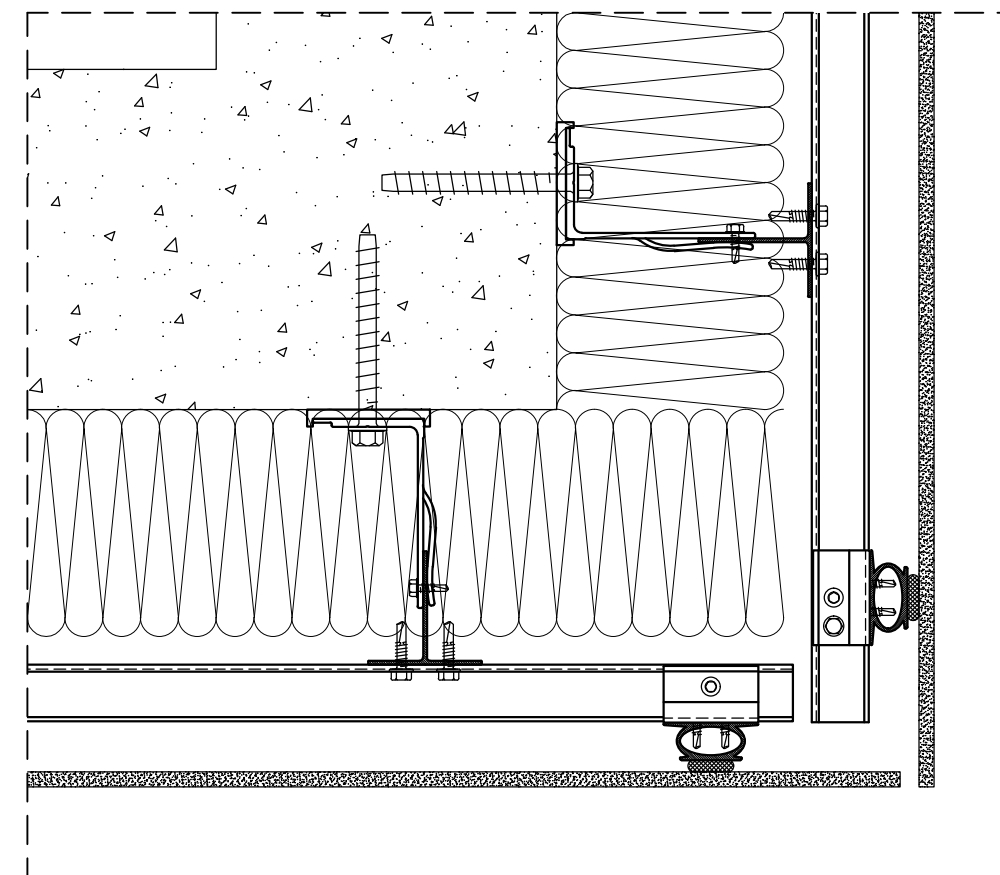
All adjustable hangers should be located on the same row, typically at the top for easy adjustment access. The chosen fixed point location should be repeated for all panels.

For each vertical profile there is only one fixed point; all others are sliding points.

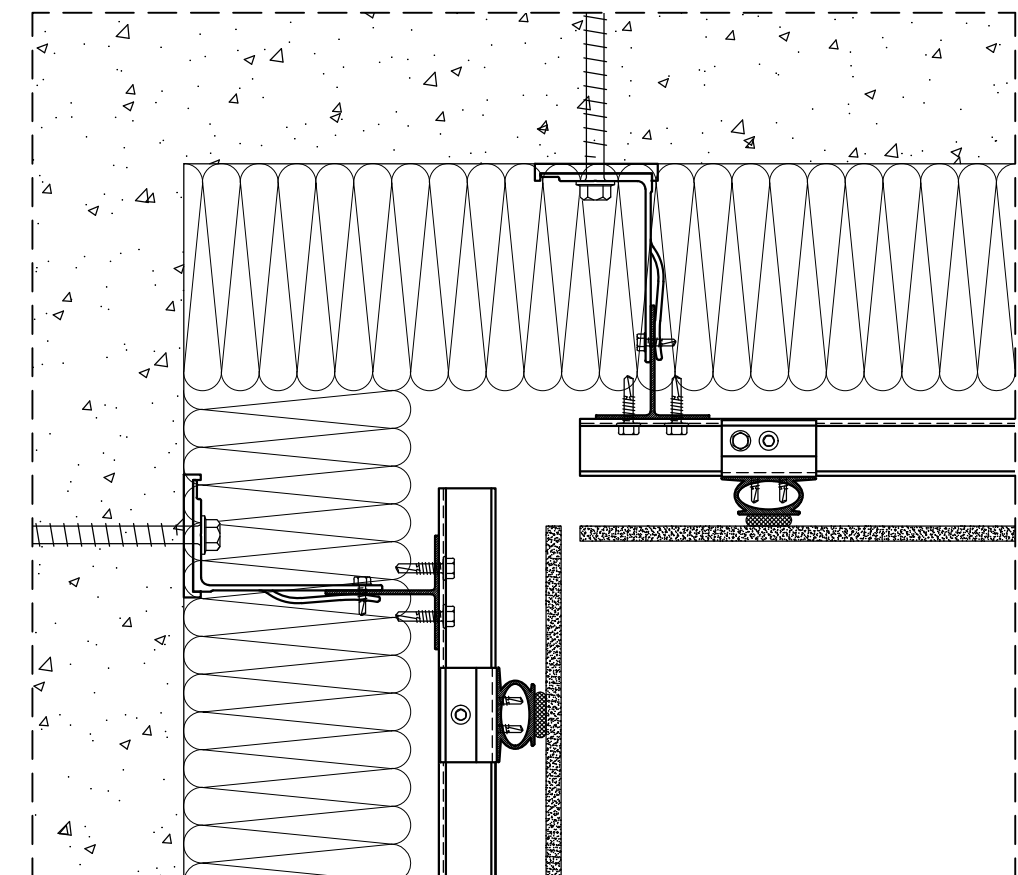
Fasteners at fixed point must be installed in the round holes.

The length of the vertical profiles should reflect the height of the panels that will be attached to them. It is recommended that the length of the vertical profiles does not exceed the floor height.

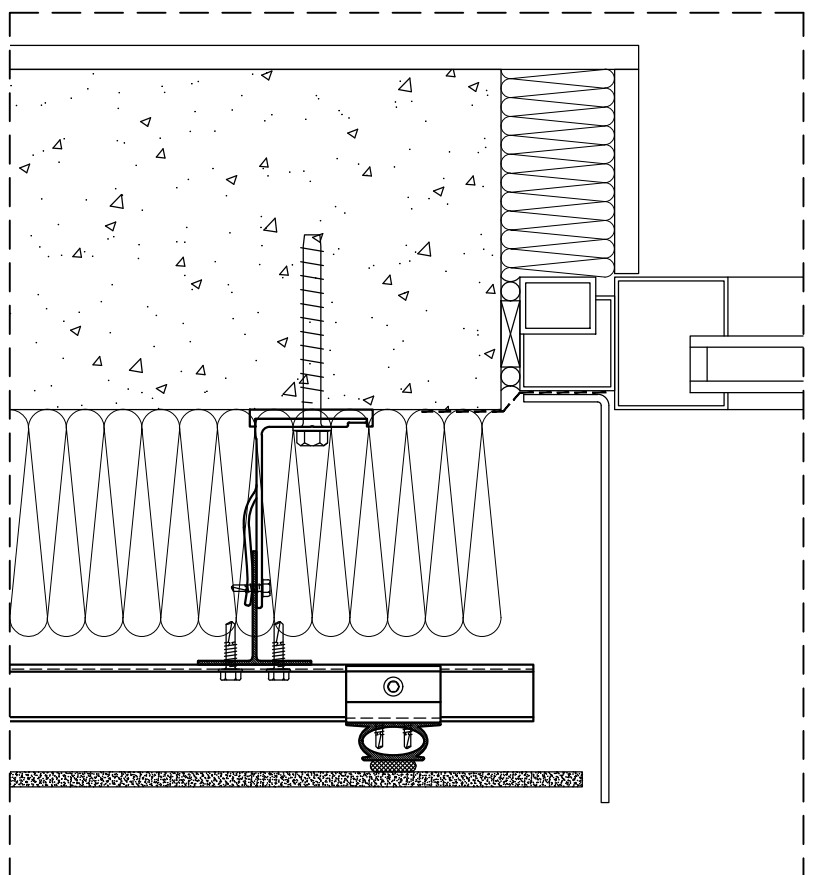
PLAN DETAIL - OUTER CORNER



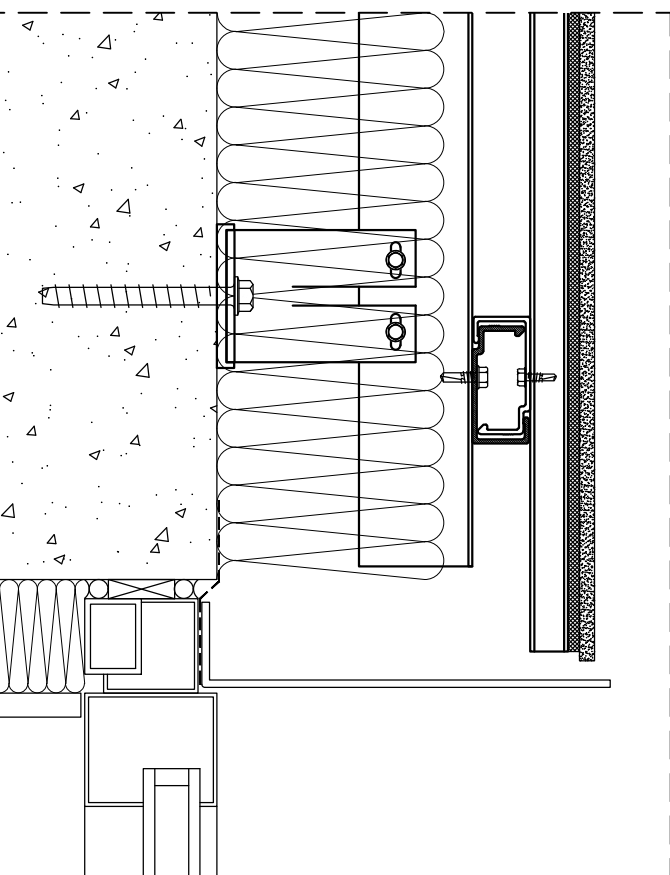
PLAN DETAIL - INNER CORNER



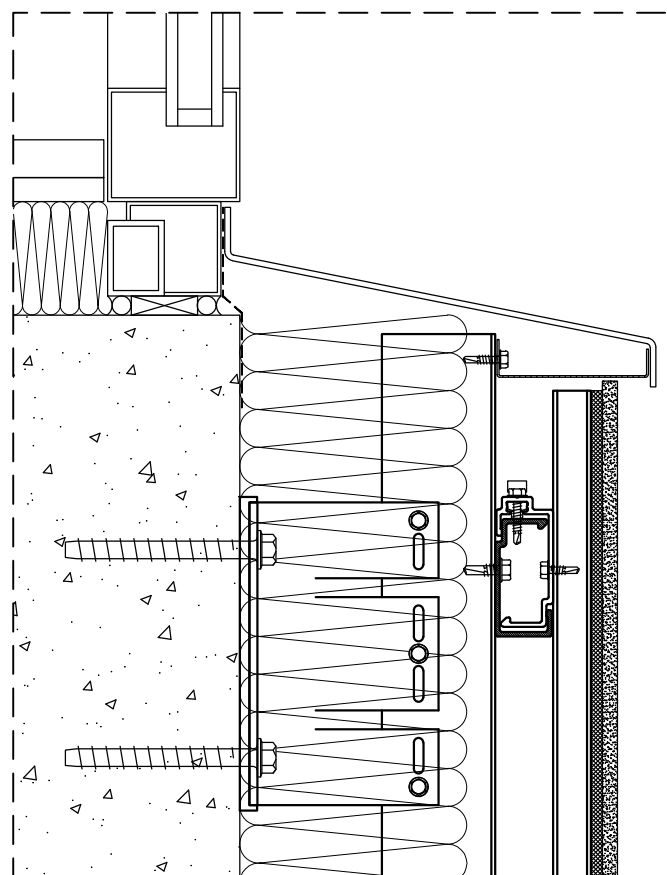
PLAN DETAIL - WINDOW JAMB



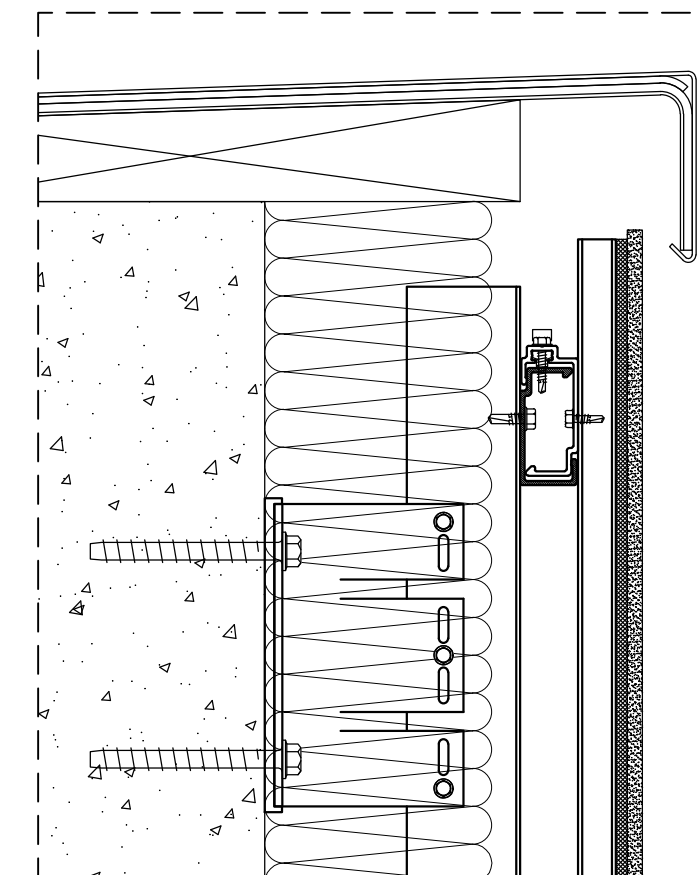
SECTION DETAIL - WINDOW HEAD



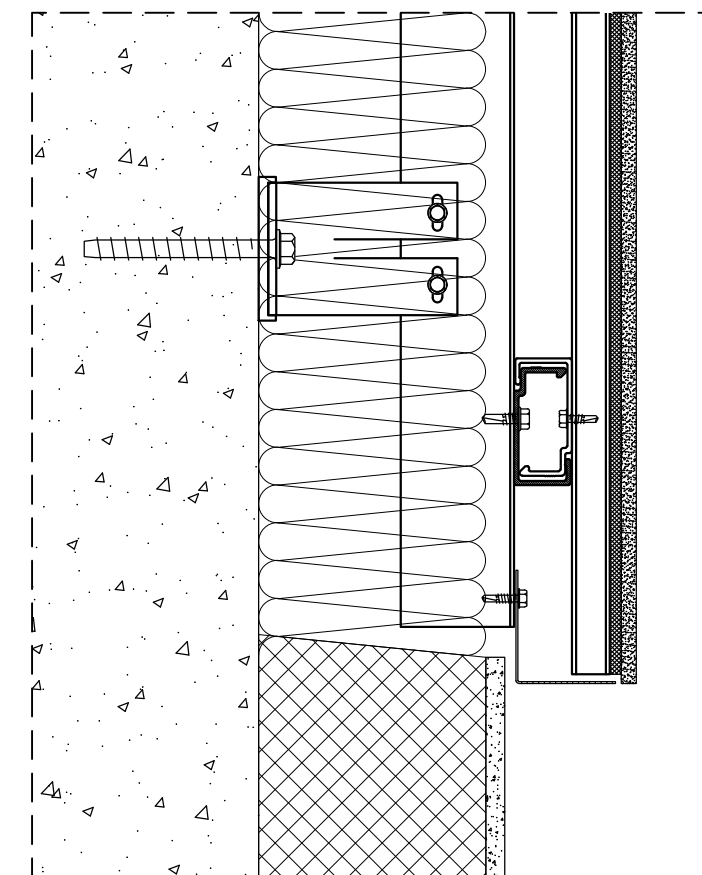
SECTION DETAIL - WINDOW SILL



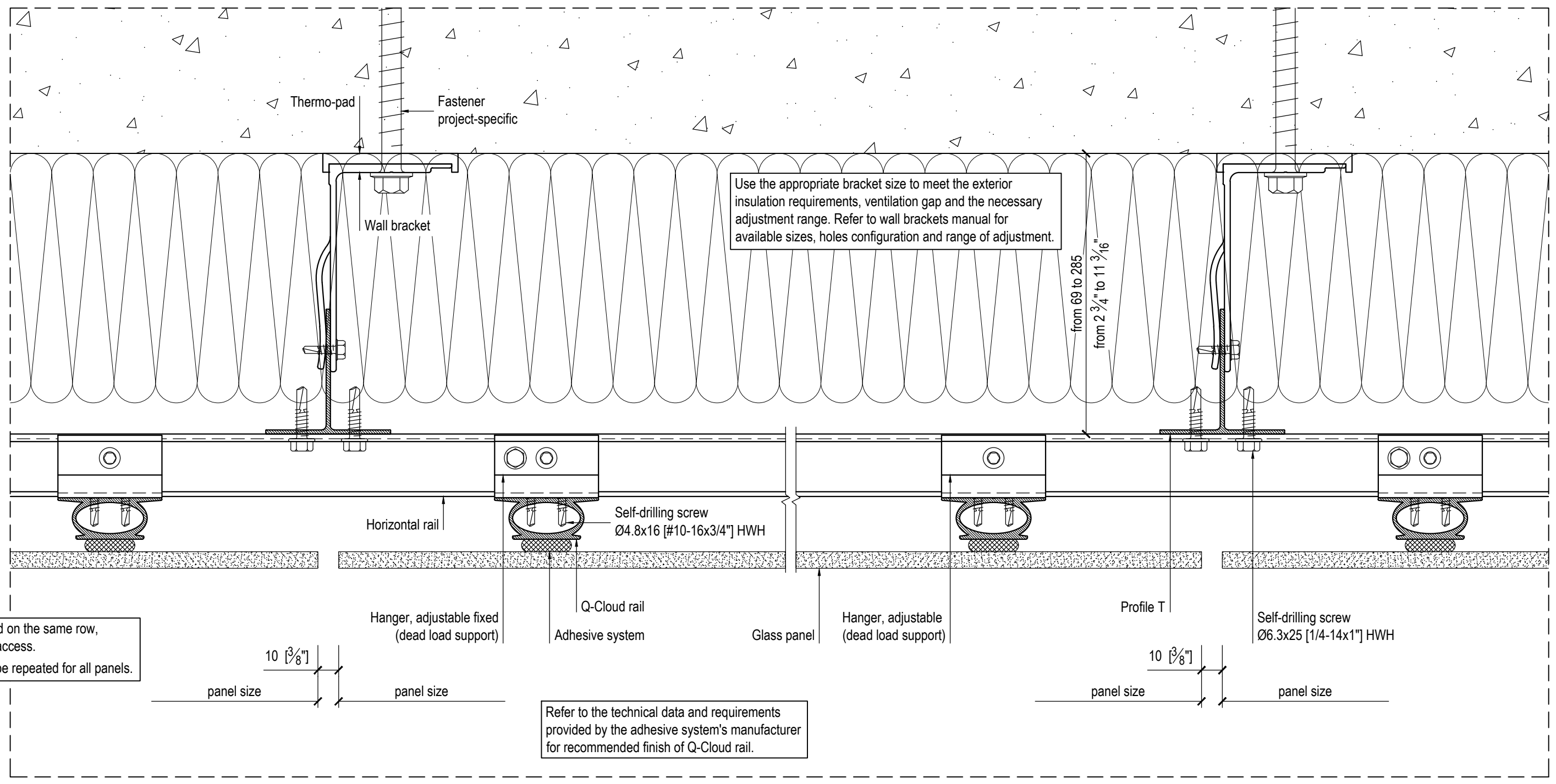
SECTION DETAIL - COPING



SECTION DETAIL - BASE

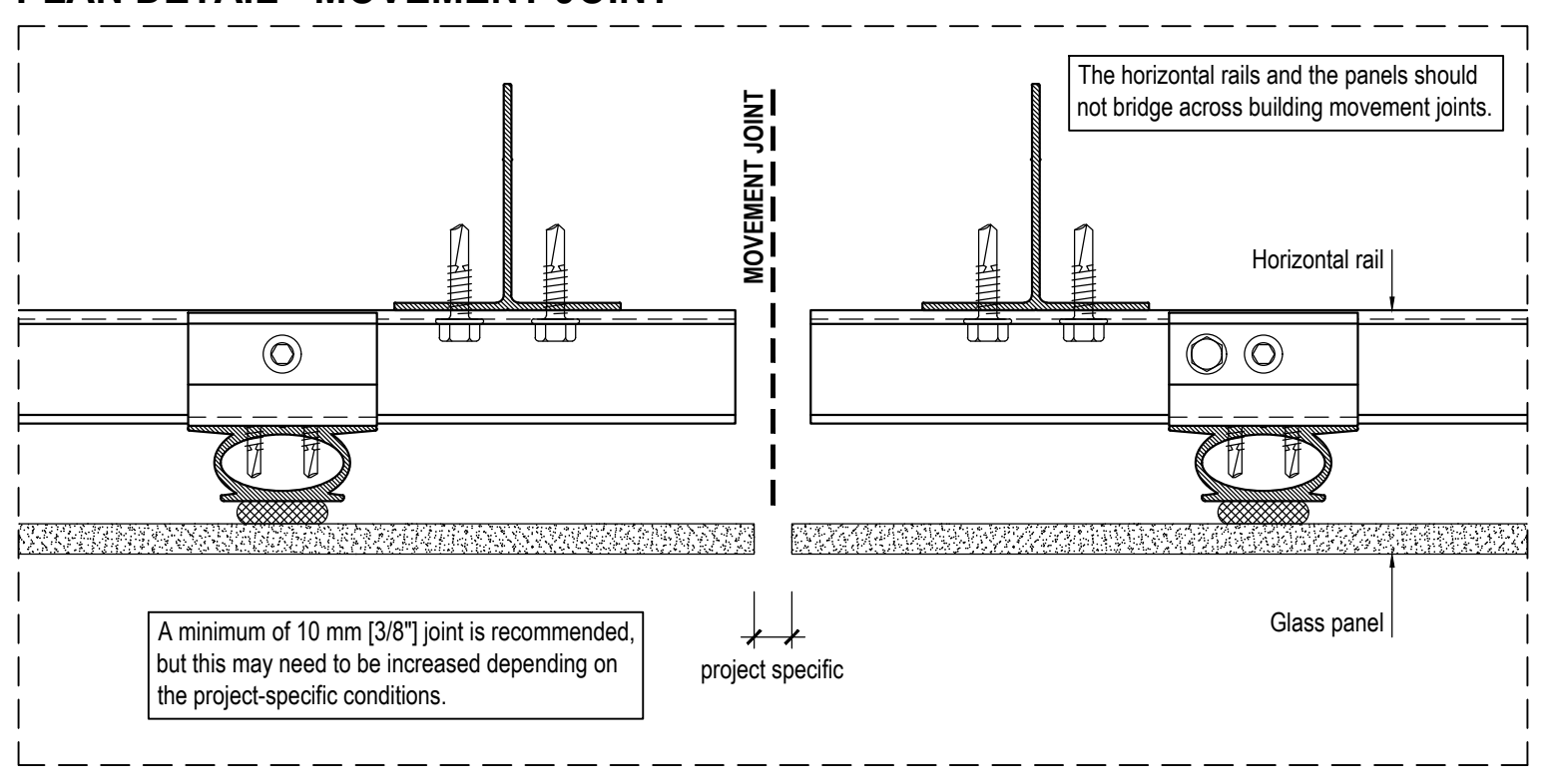


PLAN DETAIL

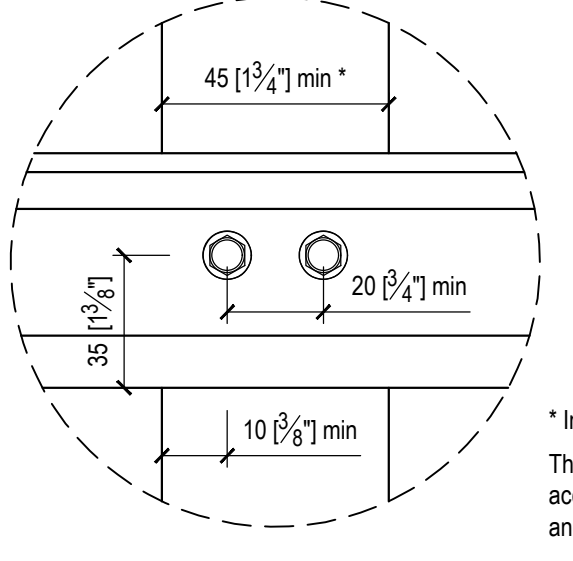


Use the appropriate bracket size to meet the exterior insulation requirements, ventilation gap and the necessary adjustment range. Refer to wall brackets manual for available sizes, holes configuration and range of adjustment.

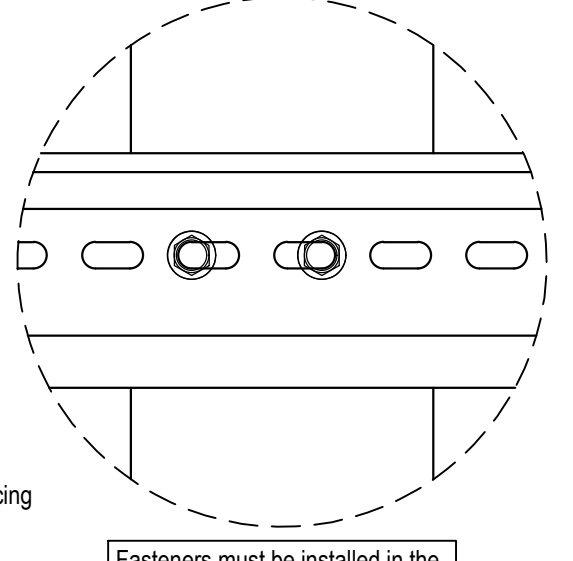
PLAN DETAIL - MOVEMENT JOINT



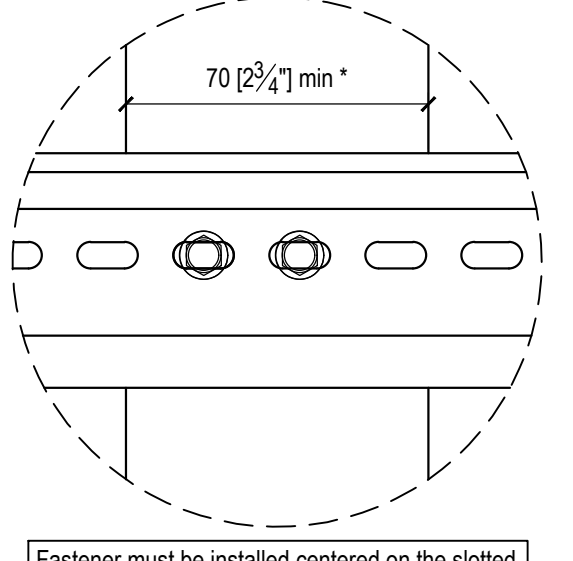
HORIZONTAL RAIL ATTACHMENT



FIXED POINT (ONE PER RAIL)



SLIDING POINT



> If rails with slotted holes are used, they should be fixed at mid-length (fixed point) and allowed to expand toward the ends using slotted holes (sliding points).
> The slotted holes are suitable for self-drilling screw 06.3x25 mm [1/4-14x1"].
> Slotted holes are spaced at 25.4 mm [1"] O.C.
> The number of fasteners should be specified by project-specific calculations.

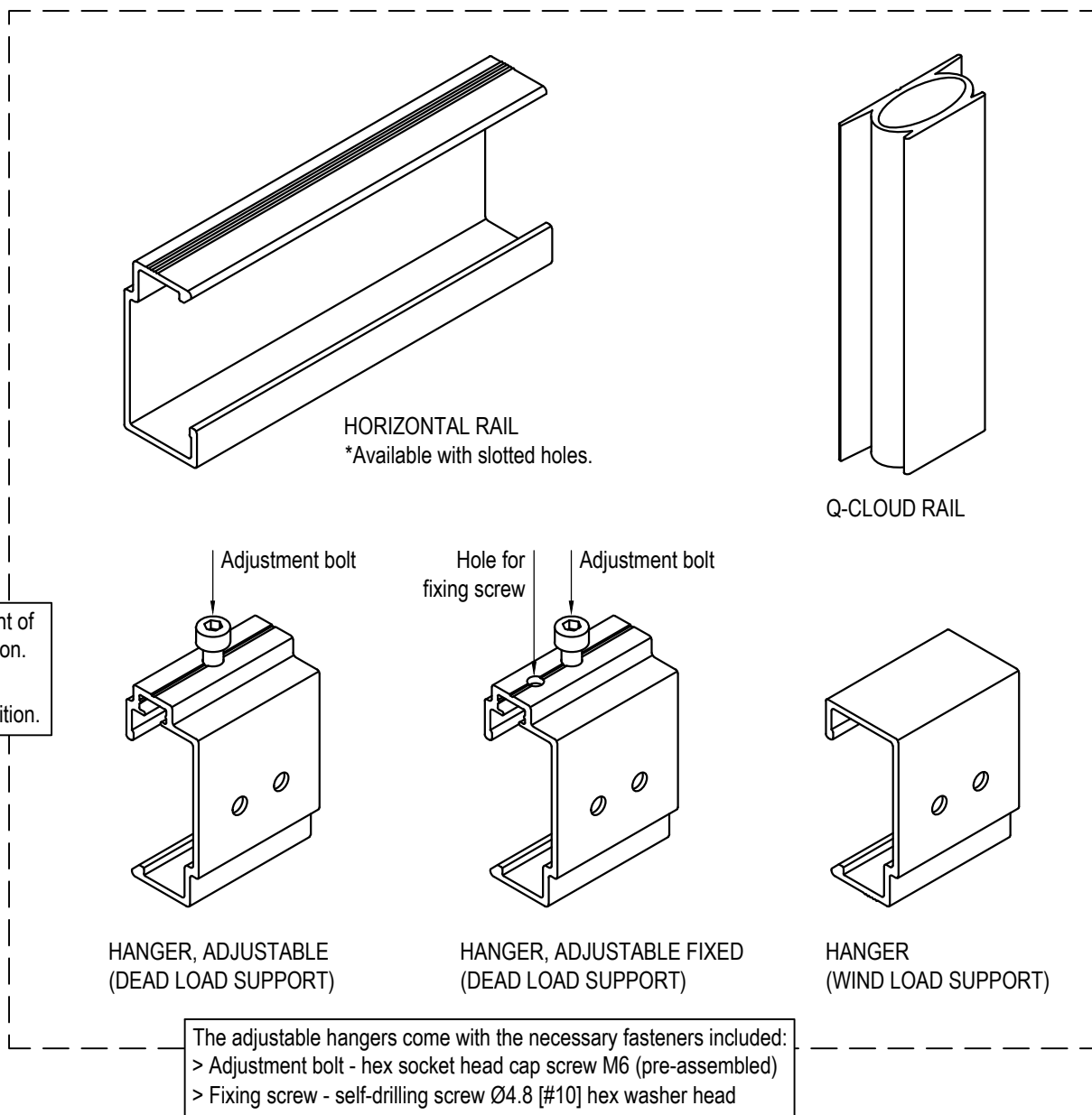
* In case of two (2) fasteners. The flange of vertical profiles should be wide enough to accommodate the number of screws, the minimum spacing and edge distance, and installation tolerances.

Provide the necessary movement gaps at wall openings - such as windows and doors, building corners and setbacks, etc.

GENERAL NOTES

Movement joints in profiles and panels must allow for thermal expansion of the cladding system's components and the movement of building structure.
The maximum length of the rails, as well as the number and spacing of attachment points should be specified by project-specific calculations.
All fasteners should be 300 series stainless steel or as recommended by the fastener's manufacturer for fasteners exposed to weather.
Minimum spacing and edge distances of fasteners must comply with codes of practice and manufacturer requirements, and should be considered in the design.

Q-CLOUD COMPONENTS



The built-in bolt allows for fine vertical adjustment of the panels to achieve the specified joint dimension. A self-drilling screw should be installed into the additional hole to lock the panel into its final position.

The adjustable hangers come with the necessary fasteners included:
> Adjustment bolt - hex socket head cap screw M6 (pre-assembled)
> Fixing screw - self-drilling screw 04.8 (#10) hex washer head

INSTALLATION PARAMETERS & RANGE OF ADJUSTMENT

